



## Amesbury Avenue, SW2

£495,000

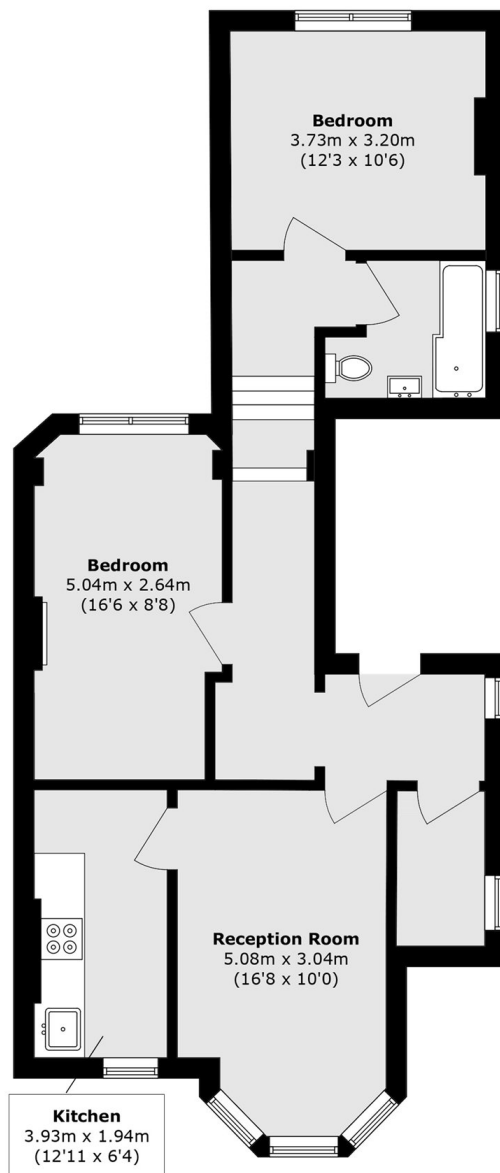
Recently renovated and offered with no onward chain, this property has two spacious double bedrooms as well as a separate kitchen and reception. Both the kitchen and bathroom have been modernised and the lease has been recently extended. This home is perfect for any purchaser who is looking to move straight in.

The property provides excellent access to Streatham town centre for a fantastic mix of boutique and High Street shops, bars and restaurants. Streatham Hill Mainline offers rail links to Victoria via Clapham Junction whilst local bus routes provides easy access to Brixton and surrounding areas.

### Features

- Two Double Bedrooms
- Bay Window
- Great Condition
- Separate Kitchen
- Great Location
- Chain Free

# Amesbury Avenue, London, SW2



Total area (approx.): 71.4 sq. m (768.5 sq. ft)