


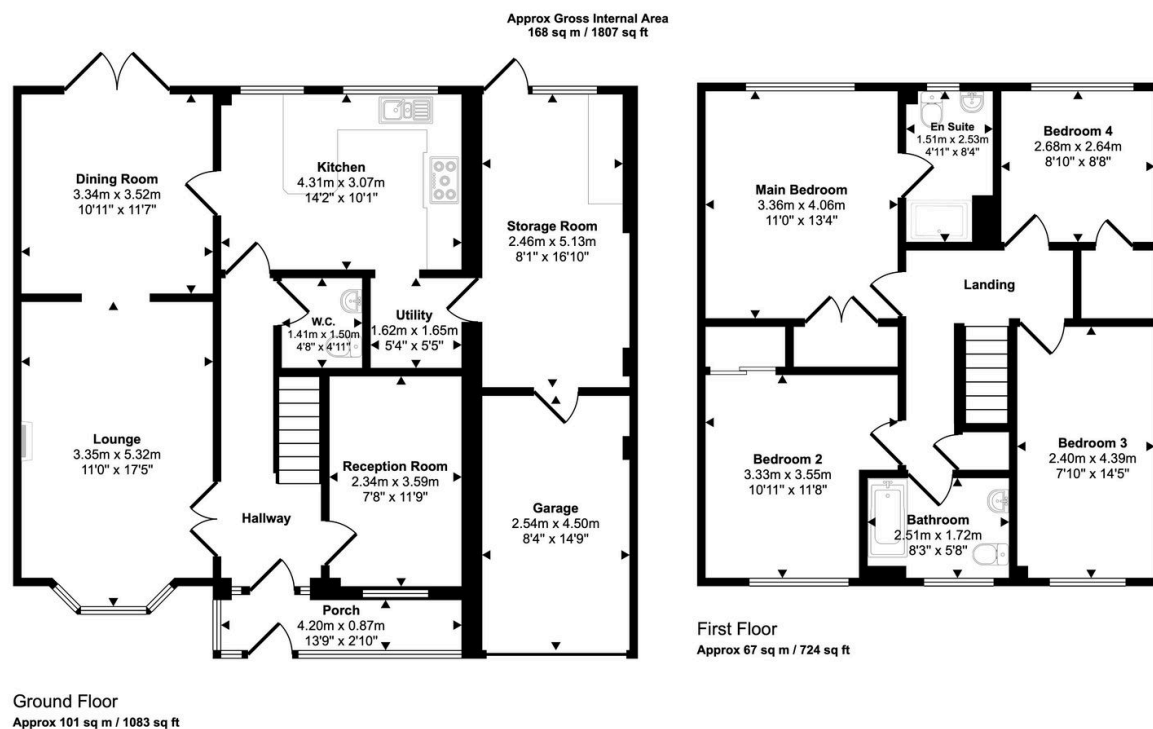
Church Close, Wythall, Birmingham, B47 6JQ

Offers Over £550,000

 4  2  3



- Excellent commuter links with easy access to M42 and surrounding areas
- Well-maintained rear garden with patio and lawn
- Stylish family bathroom and convenient downstairs WC
- Modern fitted kitchen with space for appliances and dining area
- Detached family home in a quiet cul-de-sac location
- Close to highly regarded schools and local amenities
- Integral garage with internal access and block-paved driveway
- Bright lounge with French doors opening onto the rear garden
- Three reception rooms offering versatile living space
- Four spacious bedrooms, including an en-suite to the principal bedroom



This floorplan is only for illustrative purposes and is not to scale. Measurements of rooms, doors, windows, and any items are approximate and no responsibility is taken for any error, omission or mis-statement. Icons of items such as bathroom suites are representations only and may not look like the real items. Made with Made Snappy 360.

A Beautifully Presented Four-Bedroom Detached Family Home – Church Road, B47. Viewings Highly Recommended to appreciate this family home.