



## Strode Road, NW10

£3,800 Per Month

AVAILABLE TO LET is this beautifully presented four-bedroom Edwardian terraced house, situated in the heart of Willesden Green, just moments from the coveted Roundwood Park.

- Beautiful 4 bedroom, 2 bathroom Edwardian house
- Bright bay fronted double reception room
- Separate modern fitted kitchen
- High ceilings and period features throughout
- Private garden
- Situated close to Roundwood Park
- Transport: Dollis Hill (Jubilee - Zone 2)
- Council: Brent (D)
- Deposit: £4,384
- Viewing is highly recommended

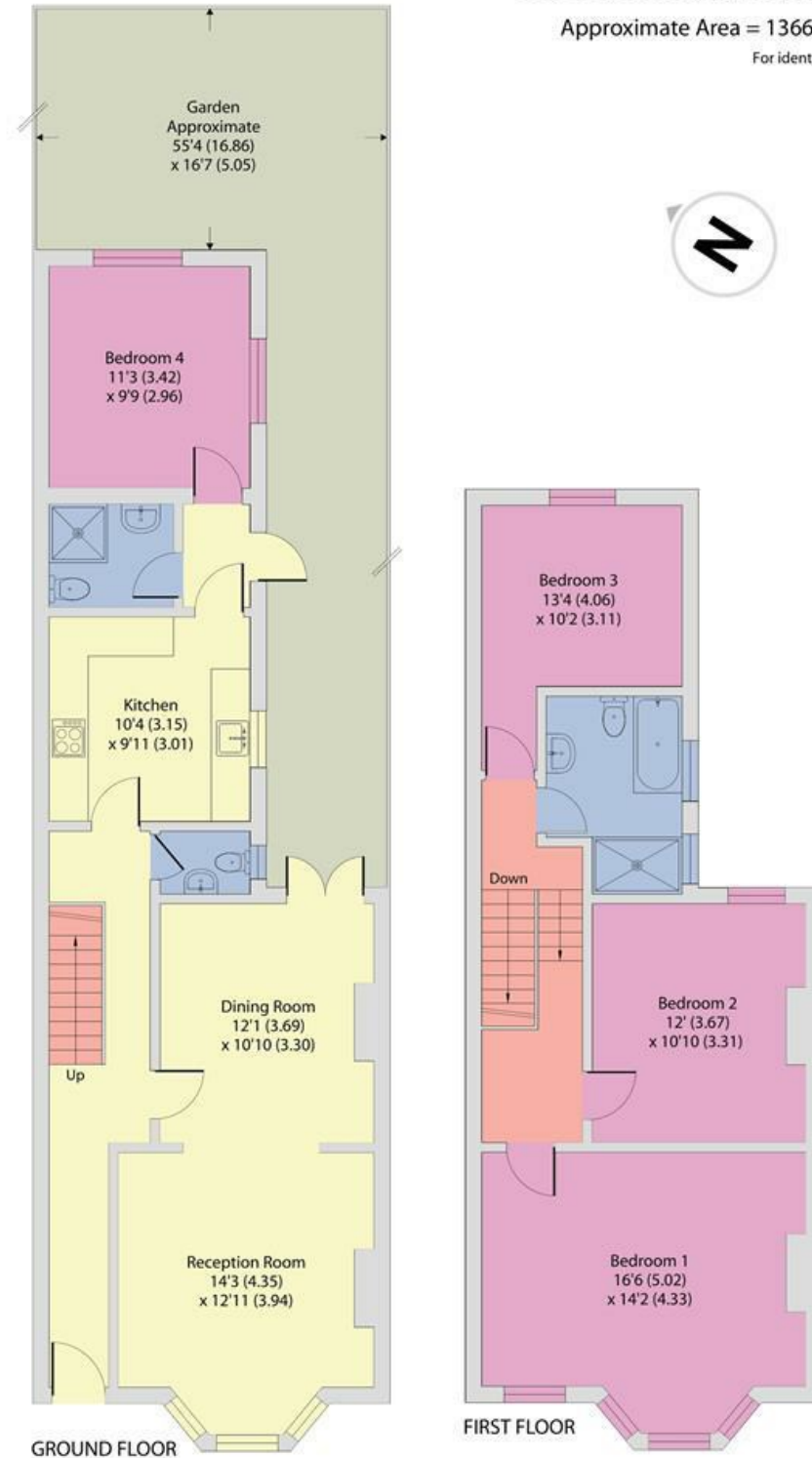


020 8450 9377 - 020 8459 1133  
rentals@cameronsstiff.co.uk

## Strode Road, London, NW10

Approximate Area = 1366 sq ft / 126.9 sq m

For identification only - Not to scale



Floor plan produced in accordance with RICS Property Measurement 2nd Edition, Incorporating International Property Measurement Standards (IPMS2 Residential). © nchecom 2025. Produced for Camerons Stiff & Co. REF: 1251425

**EPC: C**  
Ref: 19678541

