



Pembridge Villas, W11

£760,000

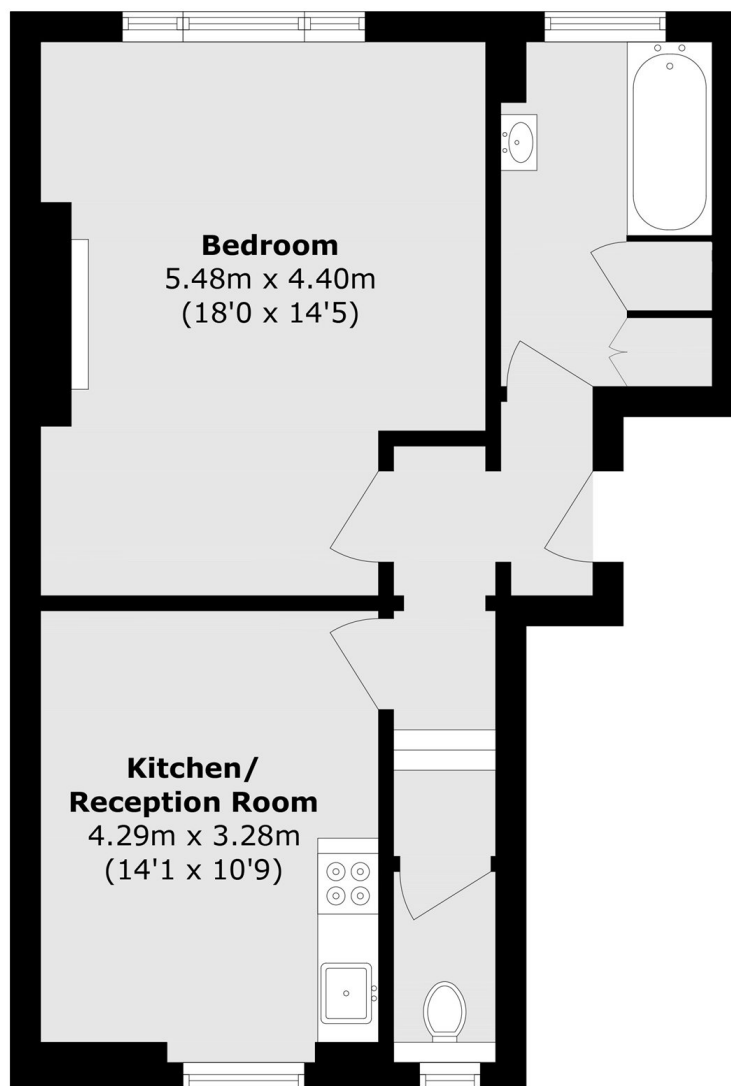
A rare opportunity to purchase a well proportioned First floor apartment with impressive ceiling heights, forming part of a detached mid-19th-century white stucco-fronted villa. In need of modernisation, the property offers excellent potential for refurbishment and reconfiguration (subject to the usual consents), presenting an exciting project in a prime location.

Pembridge Villas is a tree lined residential road ideally located between the chic restaurants and boutiques on Westbourne Grove and the convenient transport links in Notting Hill Gate. Hyde Park and Kensington Gardens are a short walk away.

Features

Unmodernised
Second Floor
High Ceilings
Detached Villa
White Stucco Fronted
Prime Location

Pembridge Villas, LONDON, W11



Total area (approx.): 54.7 sq. m (588.8 sq. ft)