

**RUSH
WITT &
WILSON**



**13 St. James Heights Paradise Walk, Bexhill-On-Sea, East Sussex TN40 2LG
£190,000 Leasehold**

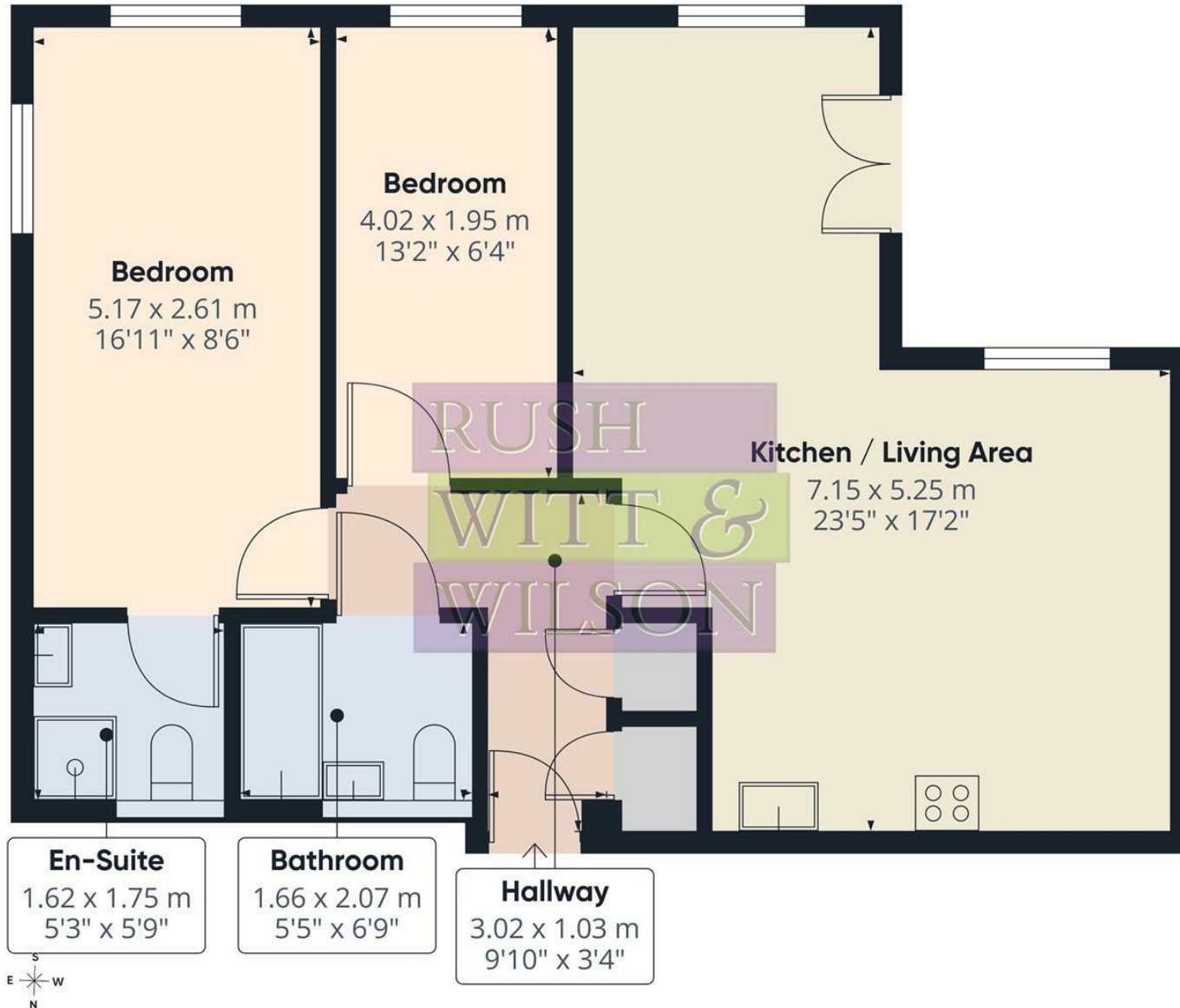
About the property

A beautifully presented two bedroom purpose built apartment comprising, entrance hallway, L-shaped living/dining room with fitted kitchen, two double bedrooms, with the main benefitting from an en-suite, and an additional bathroom suite. Other benefits include electric heating system, double glazed windows and doors and Juliet balcony to the southerly aspect. The property also boasts use of its own allocated parking space.

The property is situated in this highly convenient and sought after location of Bexhill, within close proximity to Bexhill Retail Park, with its wide range of amenities, Glyne Gap Beach and nearby education facilities.

Viewings are highly recommended by Rush, Witt & Wilson Sole Agents.



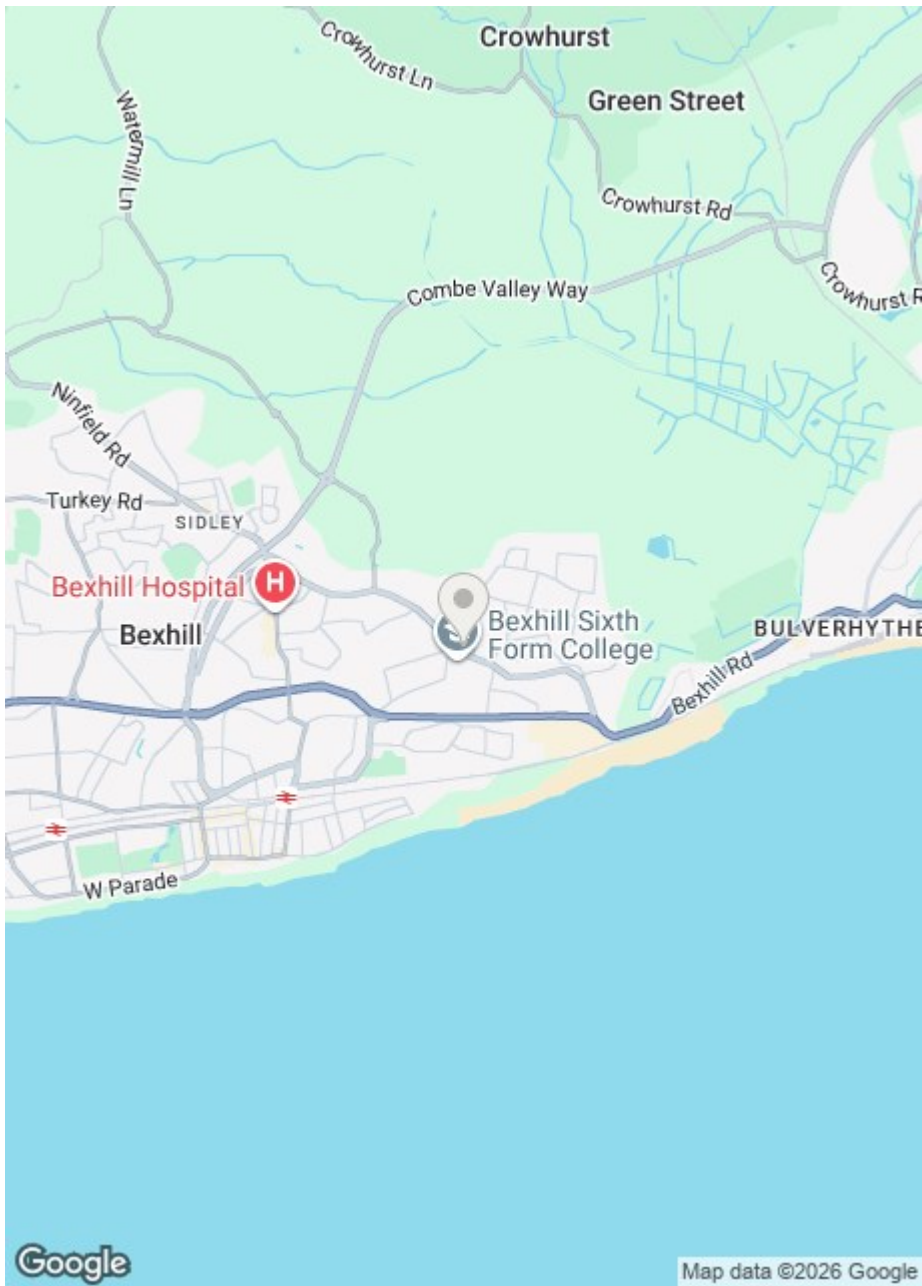


Approximate total area⁽¹⁾
62.4 m²
671 ft²

(1) Excluding balconies and terraces

Calculations reference the RICS IPMS 3C standard. Measurements are approximate and not to scale. This floor plan is intended for illustration only.

GIRAFFE360



Energy Efficiency Rating		
	Current	Potential
Very energy efficient - lower running costs		
(92 plus) A		
(81-91) B		
(69-80) C	79	80
(55-68) D		
(39-54) E		
(21-38) F		
(1-20) G		
Not energy efficient - higher running costs		
England & Wales	EU Directive 2002/91/EC	

Environmental Impact (CO ₂) Rating		
	Current	Potential
Very environmentally friendly - lower CO ₂ emissions		
(92 plus) A		
(81-91) B		
(69-80) C		
(55-68) D		
(39-54) E		
(21-38) F		
(1-20) G		
Not environmentally friendly - higher CO ₂ emissions		
England & Wales	EU Directive 2002/91/EC	

Council Tax Band - C

Fixtures and fittings: A list of the fitted carpets, curtains, light fittings and other items fixed to the property which are included in the sale (or may be available by separate negotiation) will be provided by the Seller's Solicitors.

Important Notice:

1. Particulars: These particulars are not an offer or contract, nor part of one. You should not rely on statements by Rush, Witt & Wilson in the particulars or by word of mouth or in writing ("information") as being factually accurate about the property, its condition or its value. Neither Rush, Witt & Wilson nor any joint agent has any authority to make any representations about the property, and accordingly any information given is entirely without responsibility on the part of the agents, seller(s) or lessor(s).
2. Photos, Videos etc: The photographs, property videos and virtual viewings etc. show only certain parts of the property as they appeared at the time they were taken. Areas, measurements and distances given are approximate only.
3. Regulations etc: Any reference to alterations to, or use of, any part of the property does not mean that any necessary planning, building regulations or other consent has been obtained. A buyer or lessee must find out by inspection or in other ways that these matters have been properly dealt with and that all information is correct.
4. VAT: The VAT position relating to the property may change without notice.
5. To find out how we process Personal Data, please refer to our Group Privacy Statement and other notices at <https://rushwittwilson.co.uk/privacy-policy>



3 Devonshire Road, Bexhill-on-Sea, East Sussex, TN40 1AH
 Tel: 01424 225588 | bexhill@rushwittwilson.co.uk | www.rushwittwilson.co.uk