

Visit Alternative Available



cubitt & west

## Price

£950 PCM

Fees Apply



Available 08/05/26

Victoria Road  
Chichester PO19

cubitt & west  
Helping you move forwards



## Main Features

- Open House Event
- Alternative Deposit Option
- Ground Floor Apartment
- Allocated Parking
- Desired Location

## Accommodation

- Kitchen 10'5 x 4'8
- Lounge / Dining Room 15'0 x 7'4
- Bedroom 10'1 x 7'4
- En Suite Bathroom 6'6 x 5'5
- Separate Toilet 5'2 x 2'6
- Allocated Parking



**Deposit required is £1,096.15**  
**Chichester District - Council Tax Band Tax Band B**

Renting a property is a big commitment and we recommend that you visit the local authority website and these websites which offer helpful information and advice about letting

[www.gov.uk/government/publications/how-to-rent](http://www.gov.uk/government/publications/how-to-rent)

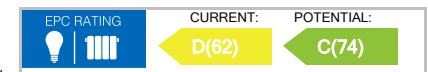
[www.gov.uk/private-renting](http://www.gov.uk/private-renting)

[www.cubittandwest.co.uk/renting/tenancy-fees-individuals/](http://www.cubittandwest.co.uk/renting/tenancy-fees-individuals/)

[www.gov.uk/green-deal-energy-saving-measures](http://www.gov.uk/green-deal-energy-saving-measures)

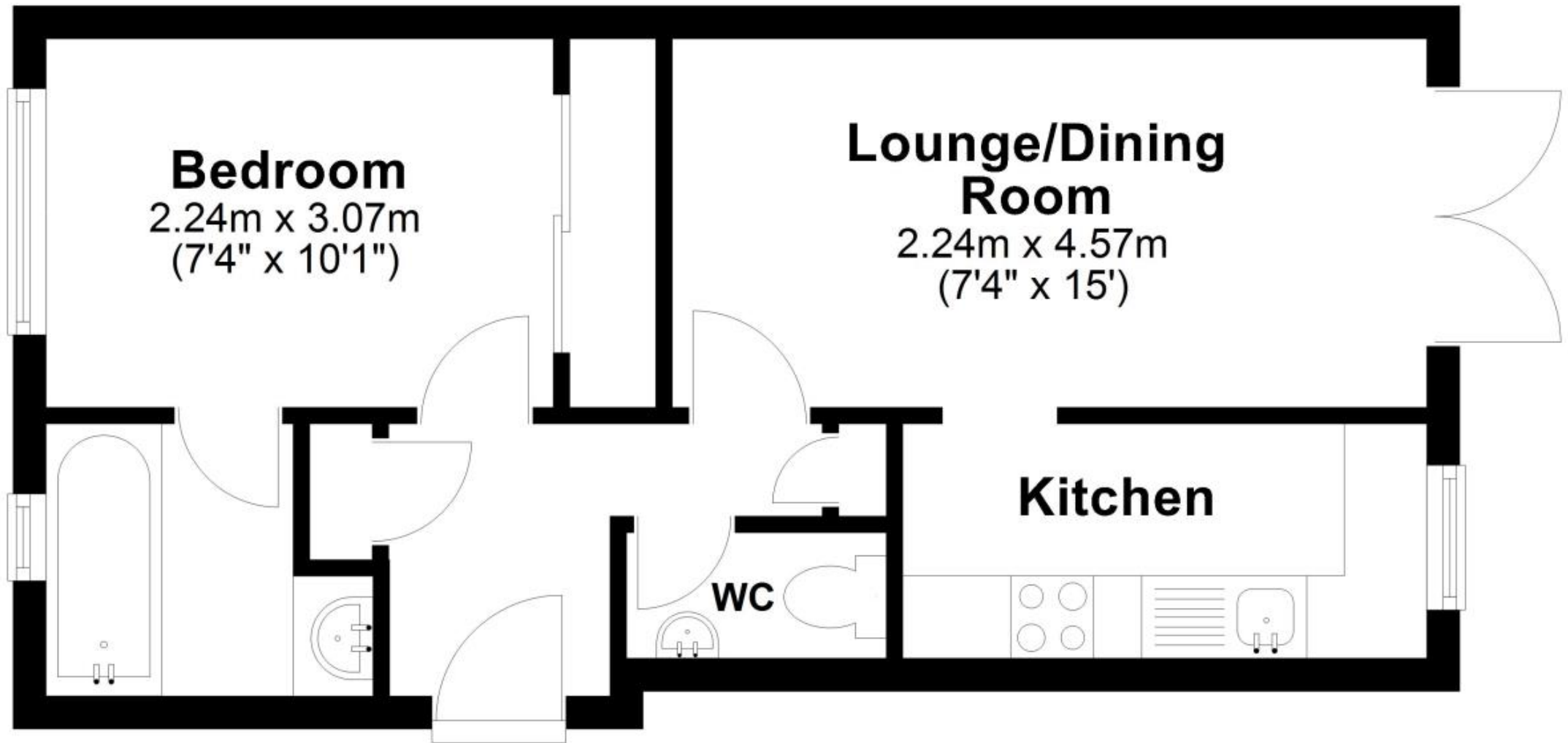
**Call Chichester 01243 774772 ■ [cubittandwest.co.uk](http://cubittandwest.co.uk)**

IMPORTANT INFORMATION: Please contact our Lettings Team who will confirm the total costs involved in renting this property. For clarification, we wish to inform the prospective tenant that we have prepared these details as a general guide. The agent has not carried out a detailed survey nor tested the services, appliances, or specific fittings (unless otherwise stated), and no warranty can be given as to their condition. All room measurements are taken at floor level. We strongly recommend that all the information which we provide about the property is verified by yourself and your advisers. The contents of this publication are © Cubitt & West, 2015. Cubitt & West is a trading name of Arun Estates Limited Registered in England No. 2597969



# Ground Floor

Approx. 32.2 sq. metres (346.7 sq. feet)



Total area: approx. 32.2 sq. metres (346.7 sq. feet)