

HUNTERS®

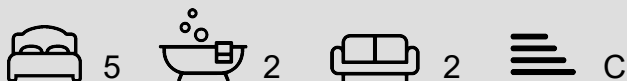
HERE TO GET *you* THERE



Oak Tree Drive, New Silksworth, Sunderland Offers In Excess Of £435,000

Council Tax: F

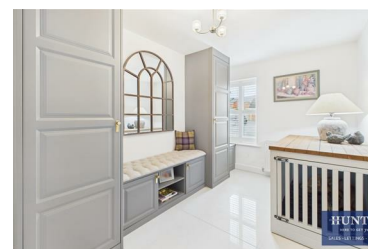
Tenure: Freehold



* PLEASE VIEW VIRTUAL TOUR AND FLOOR PLAN * SUPERBLY PRESENTED 5 BEDROOM DETACHED * CUL DE SAC LOCATION ** STUNNING TOP FLOOR MASTER WITH OPENING ROOF LIGHT, EN SUITE AND DRESSING AREA* FOUR FIRST FLOOR BEDROOMS WITH FAMILY BATHROOM * OPEN PLAN KITCHEN * GARAGE * GARDENS * FREEHOLD * EPC RATING - C *

We are delighted to present this immaculate detached house, ideally positioned in the tranquil cul-de-sac of Oak Tree Drive, New Silksworth, Sunderland. Extending over three floors and recently upgraded, this impressive family home offers a substantial 2,211 square feet of elegantly appointed living space.

Upon entry, you are welcomed by a generous reception room, exuding a sense of comfort and sophistication. The outstanding open-plan kitchen,



11b Sea Road, Fulwell, Sunderland, SR6 9BP
Tel: 0191 594 7788 Email: sunderland@hunters.com
<https://www.hunters.com>

