



BRONSON ROAD, SW20

£2,500 per month

Two bedrooms
Two reception rooms
Enclosed garden
Permit parking
Mid-terraced house
Energy rating: d

@marshandparsons
marshandparsons.co.uk

MARSH &
PARSONS



ABOUT THE PROPERTY

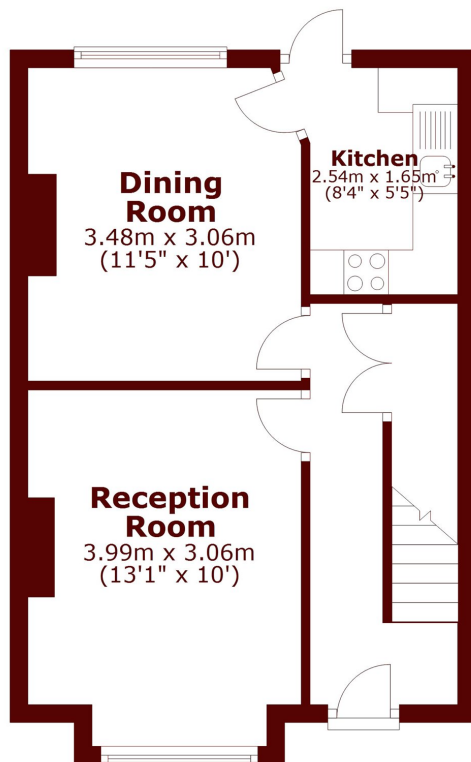
A two bedroom mid-terraced house offering a reception room, dining room, kitchen, two double bedrooms, a bathroom and an enclosed garden.

The property is in the Apostles within 0.5 miles of Raynes Park Station.

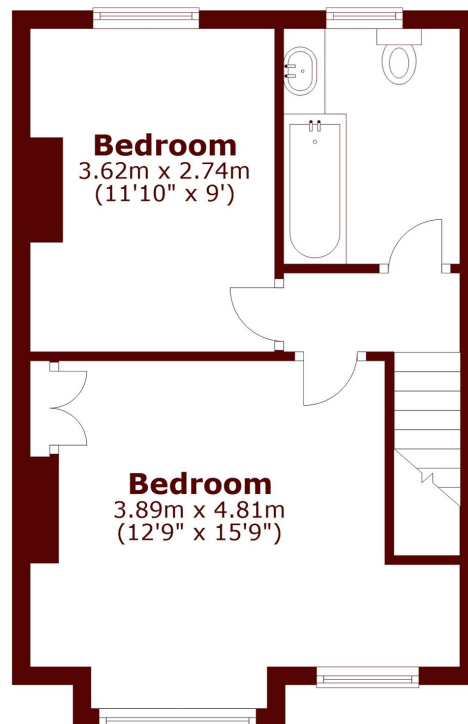


STEP INSIDE BRONSON ROAD

Ground Floor



First Floor



Total area: approx. 70.3 sq. metres (756.7 sq. feet)

Wimbledon
020 8879 6661

Energy Rating: D We aim to make our particulars both accurate and reliable. However, they are not guaranteed; nor do they form part of an offer or contract. If you require clarification on any points then please contact us, especially if you're traveling some distance to view. Please note that appliances and heating systems have not been tested and therefore no warranties can be given as to their good working order

MARSH &
PARSONS