



NEW PARK ROAD, SW2

£1,650 PCM

- One bedroom
- Gated entrance
- Own front door
- Recently refurbished
- Great transport links
- Energy rating: D



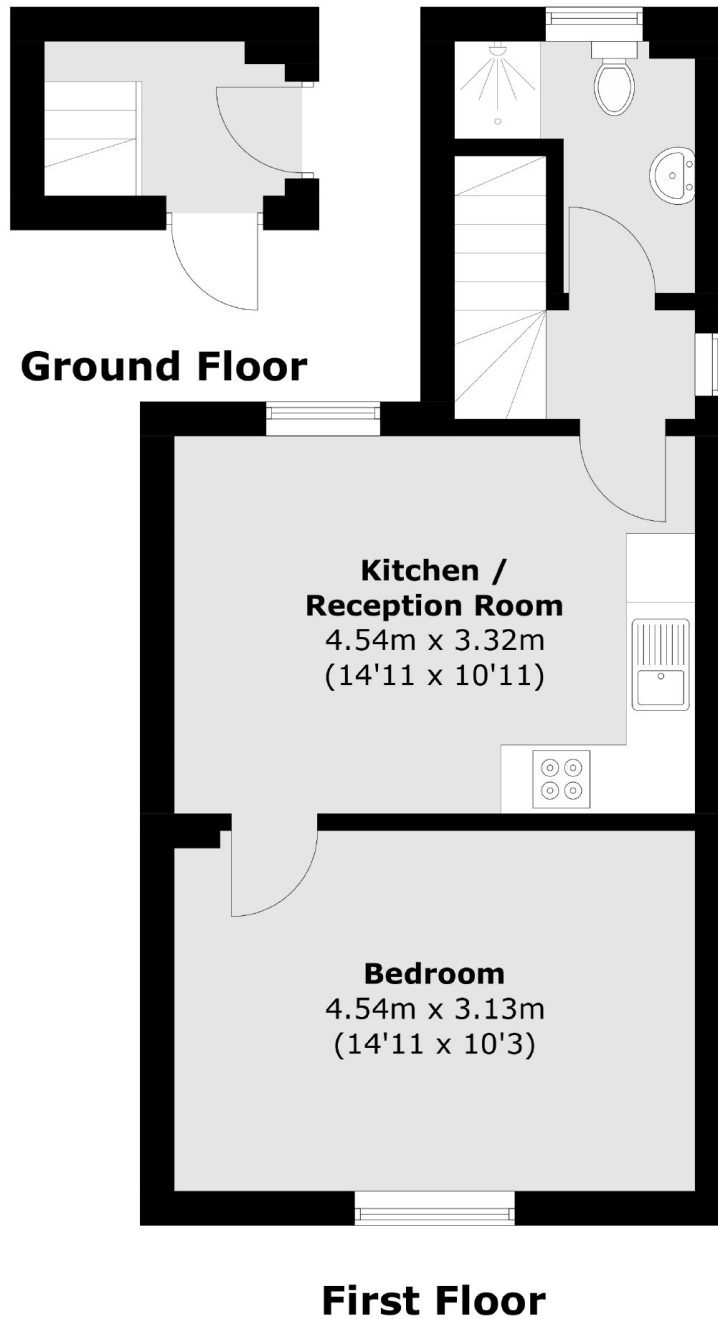


ABOUT THE HOME

A well-presented one bedroom flat in Brixton Hill. This property is located behind a gated entrance and has its own front door. The property offers a great space for a professional couple or single occupant.

Situated on a quiet residential road, New Park Road is within easy reach of both Brixton (Victoria line) Underground and Streatham Hill (mainline) station (0.8 mile) offering rail links to London Victoria via Clapham Junction, with numerous buses running close by. The shops, bars and restaurants of Brixton Hill are on your doorstep.





Total area (approx.): 40.4 sq. m (434.9 sq. ft)

JACKSONS CLAPHAM

73 Abbeville Road, London,
SW4 9JN
Sales: 020 8487 3177
Lettings: 020 8487 3178

Energy Rating: We aim to make our particulars both accurate and reliable. However they are not guaranteed; nor do they form part of an offer or contract. If you require clarification on any points then please contact us, especially if you're traveling some distance to view. Please note that appliances and heating systems have not been tested and therefore no warranties can be given as to their good working order.