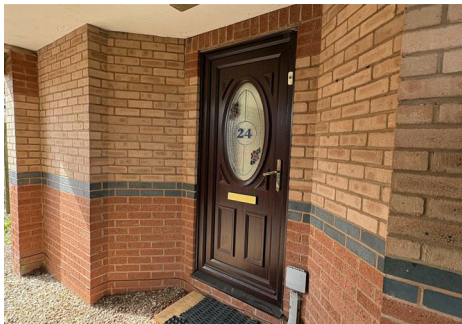




# seddon's

8 Fore Street, Tiverton, Devon, EX16 6LH



## 24 Banksia Close, Tiverton, EX16 6TT

### Asking Price £140,000

- One bedroom, two floors
- Kitchen with storage
- Enclosed rear garden
- Close to Tiverton amenities
- Potential to personalise
- Double bedroom
- Bathroom on ground floor
- Private parking
- Access to North Devon Link
- Ideal for first-time buyers

**Sales, Lettings, Mortgages:**

Bampton 01398 332006 | Cullompton 01884 32100 | Tiverton 01884 253500



## 24 Banksia Close, Tiverton EX16 6TT

A one-bedroom home with private parking for two vehicles and an enclosed garden, offering buyers the opportunity to modernise, add value and create a place of their own.



Council Tax Band: A



This one bedroom house offers an excellent opportunity for buyers seeking a home they can make their own.

Arranged over two floors, the accommodation feels more substantial than many one bedroom apartments and provides a practical layout with a comfortable living space together with a fitted kitchen offering good storage and workspace.

Upstairs, the property benefits from a double bedroom, while the bathroom is positioned on the ground floor, creating a layout that differs from the more conventional arrangement and makes good use of the available space.

The property would now benefit from some cosmetic updating in places, giving future owners the opportunity to refresh and adapt the accommodation to suit their own tastes and requirements over time.

Outside, one of the property's strong features is the large enclosed rear garden, providing a good amount of outdoor space with room to sit out, garden, or enjoy the warmer months.

In addition, the property benefits from parking for two vehicles nearby, a particularly useful feature for a home of this size.

Conveniently situated for access into Tiverton and nearby amenities, the property also offers straightforward access towards the North Devon Link Road and M5.

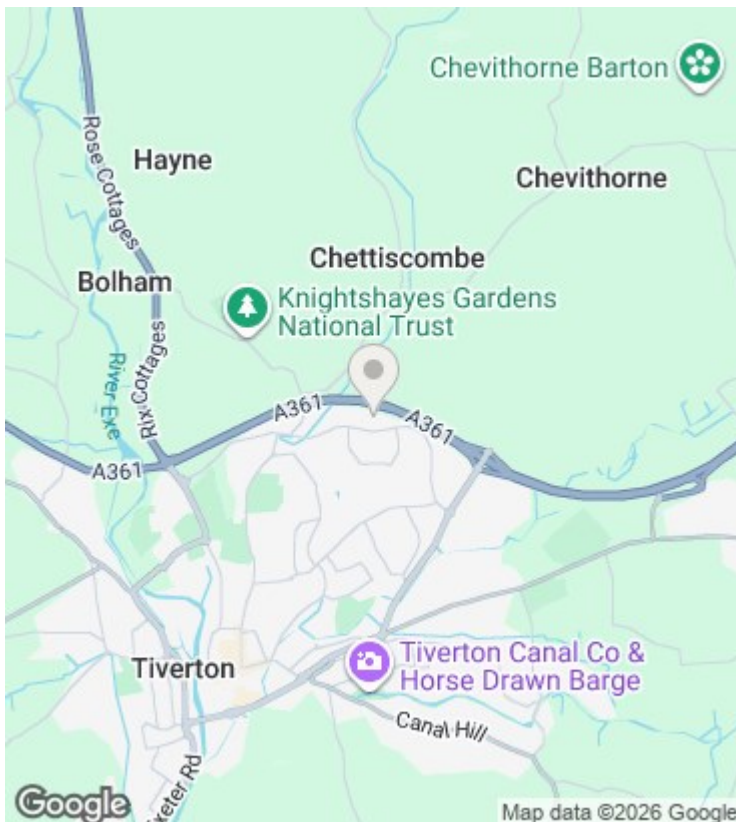
Overall, this is a sensible option for first time buyers, investors, or buyers looking for a property with outside space, parking and scope to add their own touch over time.

Council tax Band  
A

Tenure  
Freehold

Utilities  
Mains electric, water, and drainage

Local Authority  
Mid Devon District Council



## Directions

What3words gray.shack.acrobats Google Maps Code WG8F+PV5 Tiverton

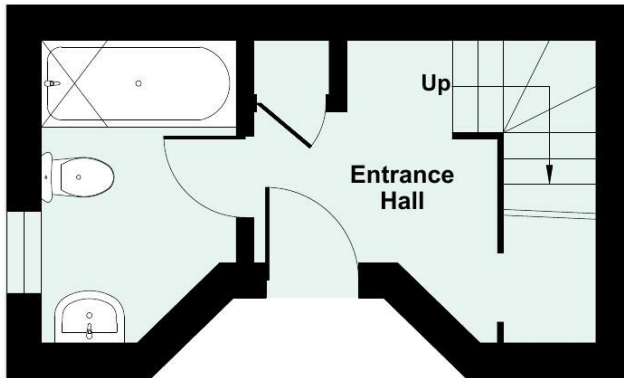
## Viewings

Viewings by arrangement only. Call 01884 253500 to make an appointment.

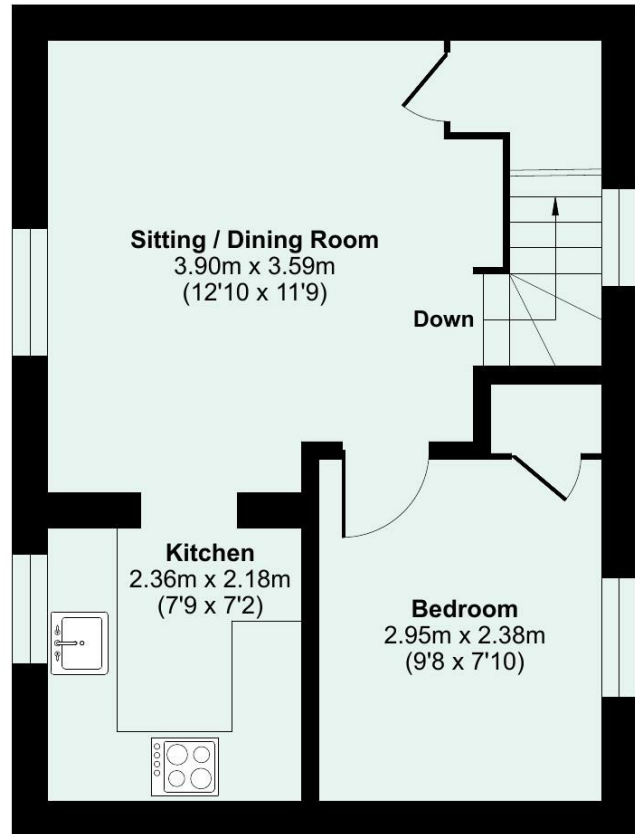
## EPC Rating: E

Energy Efficiency Rating		Current	Potential
Very energy efficient - lower running costs			
(92 plus) A			
(81-91) B			
(69-80) C			79
(55-68) D			
(39-54) E		49	
(21-38) F			
(1-20) G			
Not energy efficient - higher running costs			
England & Wales		EU Directive 2002/91/EC	

Approximate Area = 455 sq ft / 42.2 sq m  
For identification only - Not to scale



**GROUND FLOOR**



**FIRST FLOOR**



Floor plan produced in accordance with RICS Property Measurement 2nd Edition, incorporating International Property Measurement Standards (IPMS2 Residential). © ntechcom 2026. Produced for Seddon Estate Agents LLP. REF: 1458049

