



## Candle Street, E1

£375,000

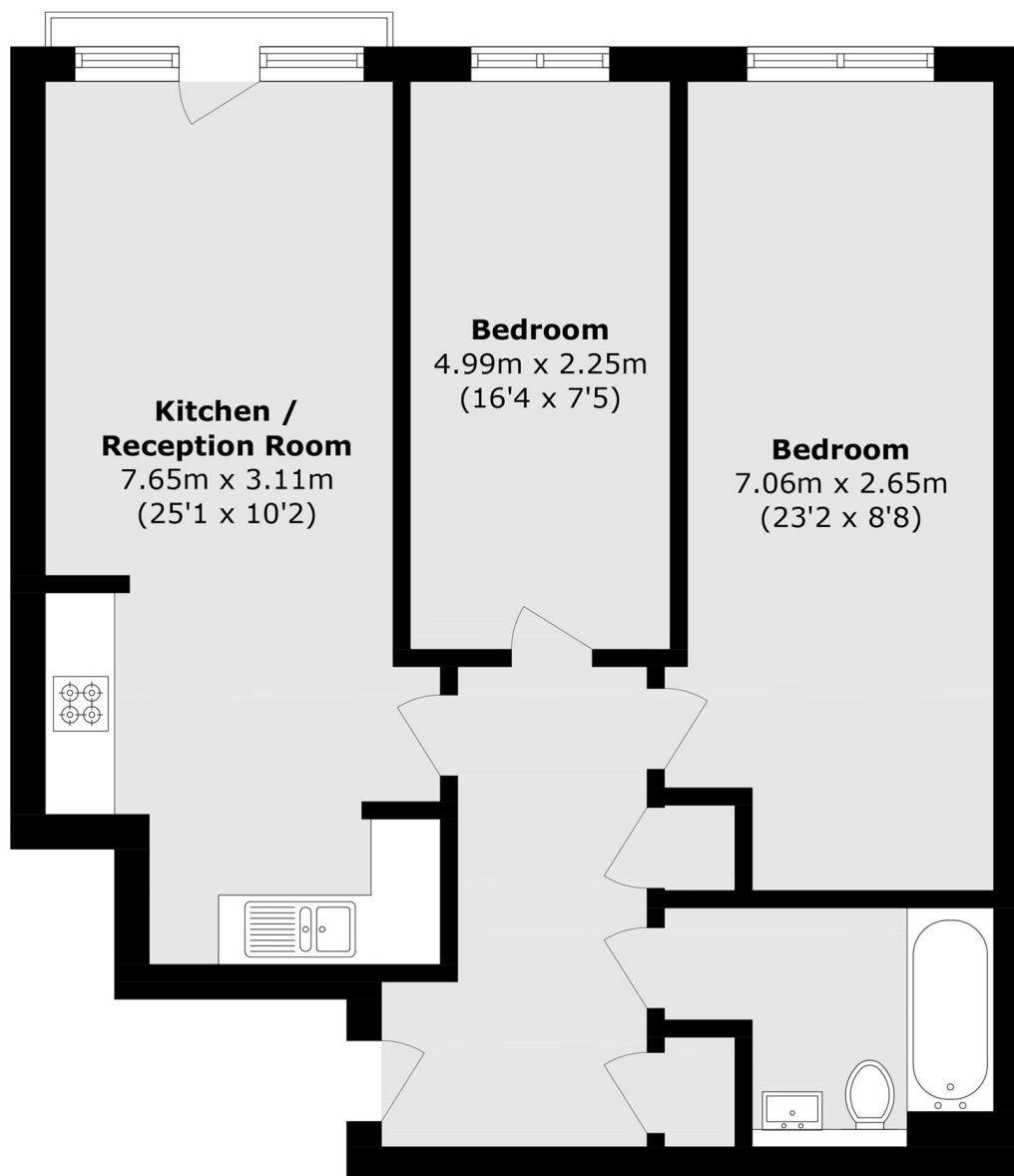
Two bedroom apartment set within the popular Candle Street development. The apartment has a spacious, open plan living area with an integrated kitchen and ample space to dine, this area gives access to the Juliette balcony that overlooks the communal courtyard. The property has two double bedrooms, a modernised family bathroom and has plenty of further storage in the hallway. The entire apartment benefits from a generous amount of natural light complimenting the bright modern interiors.

Ideally located between three stations; Stepney Green, Mile End and Limehouse there is a choice of convenient links into Canary Wharf, Central London and beyond. A variety of open green space nearby includes Mile End Park, extending to Victoria Park, the Regents Canal and River Thames path all close by. There are excellent schools nearby, as well as plenty of local restaurants, bars, galleries and markets creating a vibrant and versatile setting.

### Features

- Two bedrooms
- One bathroom
- Bright, modern interiors
- Sought after development
- Great local amenities

# Candle Street, London, E1



Total area (approx.): 70.0 sq. m (753.4 sq. ft)