





7 The Burrows

Cuddington, Northwich

3 Bedroom End-Terrace Home with Park Views.

Council Tax band: D

Tenure: Freehold

- Three Bedrooms
- End of Terrace Home
- Lounge with Balcony Views
- Downstairs Bathroom
- Access to Park Amenities
- Garage & Driveway
- Kitchen Diner
- Conservatory
- Video Tour Available
- Viewing a Must

Hallway

Kitchen Diner

Lounge

Conservatory

Downstairs Bathroom

First Floor Landing

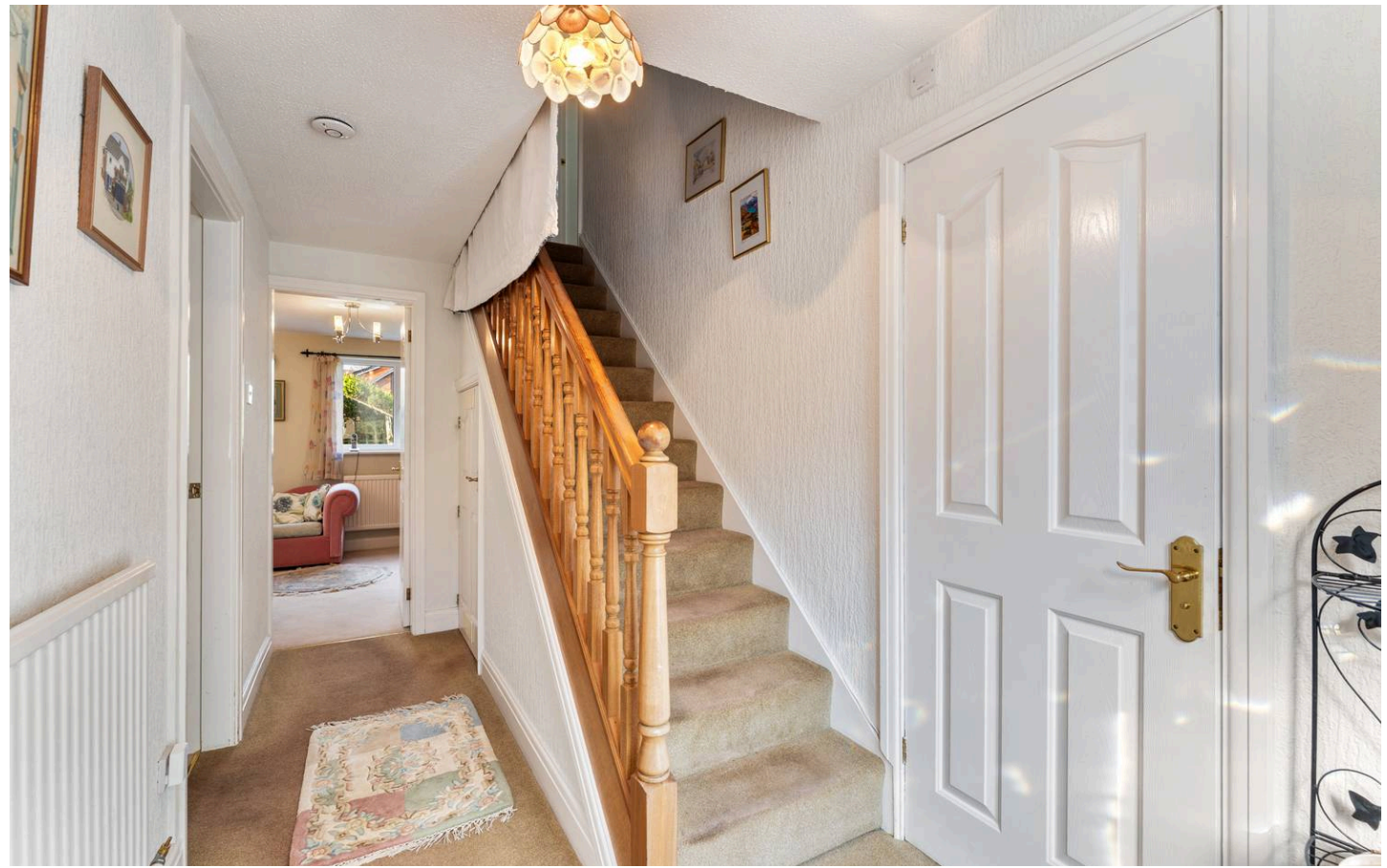
Lounge with Balcony Views

Master Bedroom

Bedroom Two

Bedroom Three

Bathroom

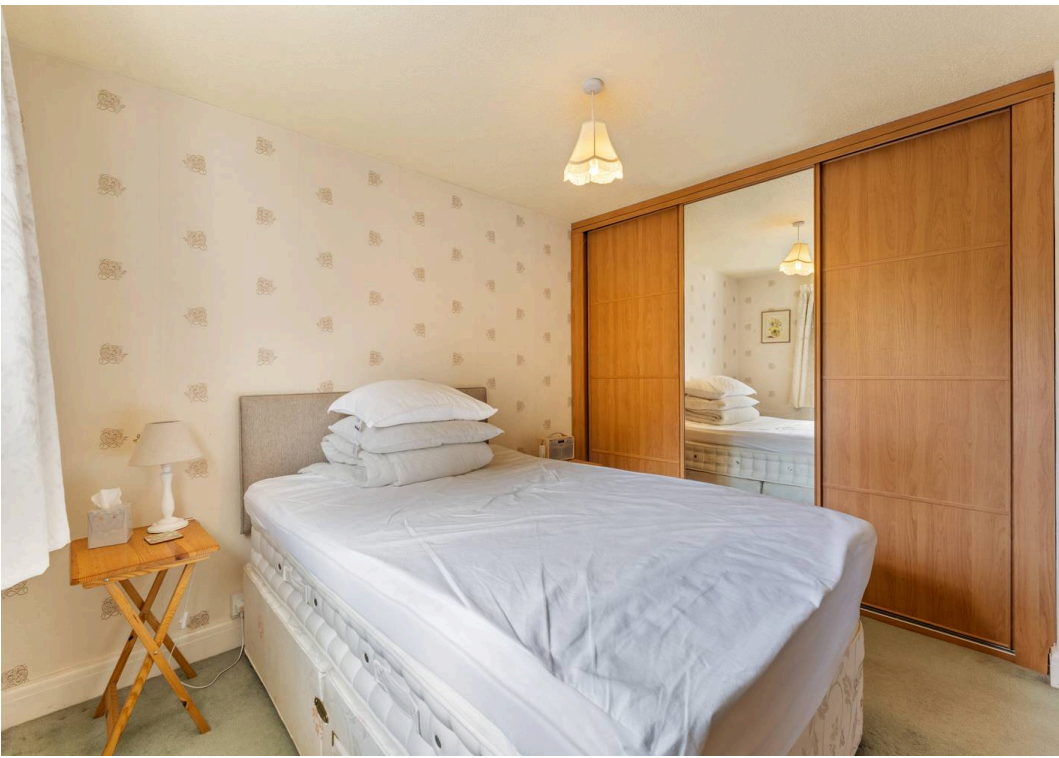


















7 The Burrows, Delamere Park

DETAILS

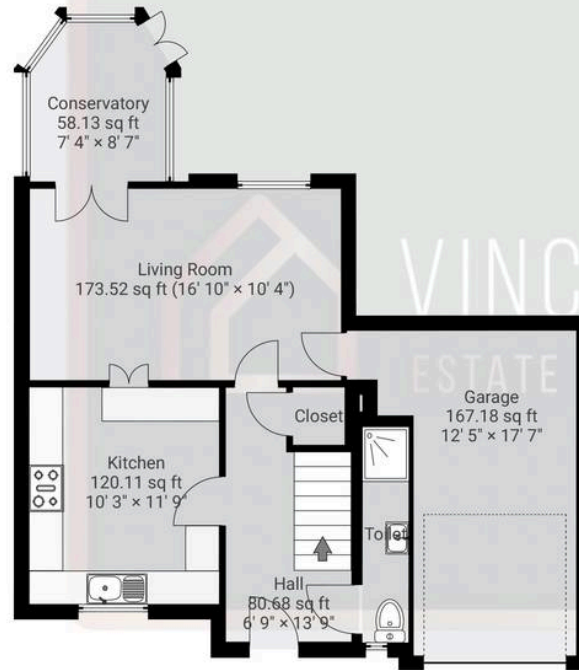
Total area: 1259.33 sq ft
Living area: 1035.76 sq ft
Floors: 2
Rooms: 14

THIS FLOORPLAN IS PROVIDED WITHOUT WARRANTY OF ANY KIND. VINCENT JAMES ESTATE AGENCY DISCLAIMS ANY WARRANTY INCLUDING, WITHOUT LIMITATION, SATISFACTORY QUALITY OR ACCURACY OF DIMENSIONS.

0' 2' 4' 6' 8' 10'
1:101

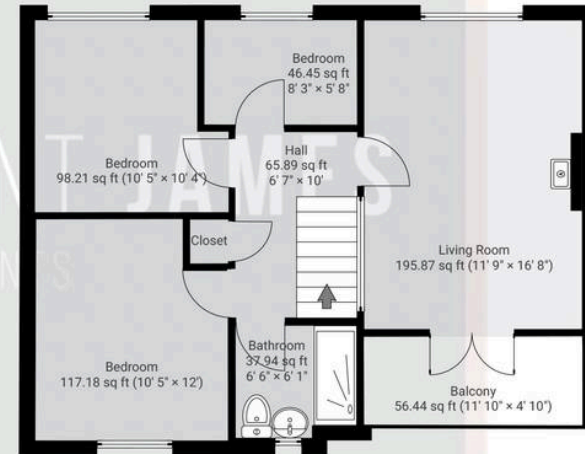
▼ Ground Floor

TOTAL AREA: 636.88 sq ft · LIVING AREA: 469.70 sq ft · ROOMS: 7



▼ 1st Floor

TOTAL AREA: 622.45 sq ft · LIVING AREA: 566.06 sq ft · ROOMS: 7



Vincent James Estate Agents

87 Witton Street, Northwich - CW9 5DR

01606663939 · hello@vincentjamesestateagents.co.uk · www.vincentjamesestateagents.co.uk/