

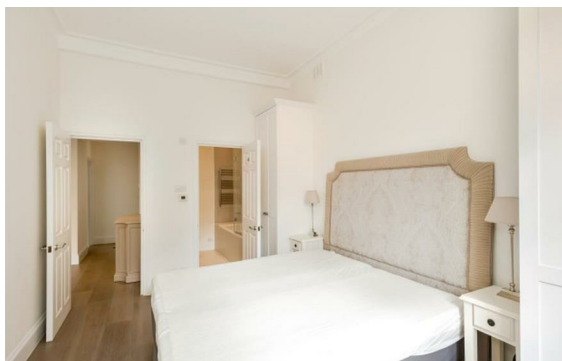


Allsop Place, Marylebone, London, NW1

Rent £1,050 PCM

2 Bed | 2 Bath | 1 Reception

*Please call us on 020 7724 2233 or email us [info@newingtonstates.com](mailto:info@newingtonstates.com) to book a viewing.*



A spacious two-bedroom apartment offering comfortable accommodation and a practical layout moments from Regent's Park. The property comprises a bright reception room, a fitted kitchen, and two well-proportioned bedrooms. A bathroom and separate shower room provide added flexibility, while the generous living space and modern presentation make the apartment well suited to professionals, couples, or small families.

Residents benefit from lift access, portage, and concierge services. Ideally positioned close to Regent's Park and within easy reach of Baker Street Station, with a wide selection of cafés, restaurants, and local amenities nearby.

EPC Rating: C

## Energy Efficiency Rating: C

Agents Note: Whilst every care has been taken to prepare these particulars, they are for guidance purposes only. All measurements are approximate and are for general guidance purposes only and whilst every care has been taken to ensure their accuracy, they should not be relied upon and potential buyers/tenants are advised to recheck the measurements.

**NEWINGTON**  
— ESTATES —

60 Upper Montagu Street

London

W1H 1SN

020 7724 2233

[info@newingtonstates.com](mailto:info@newingtonstates.com)

<http://www.newingtonstates.com>