





# Serrin Way

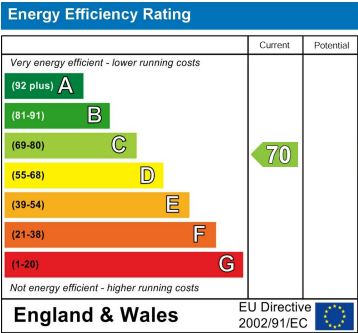
Horsham, RH12 5YP

**Guide price £180,000**

A spacious ground floor maisonette, set within a cul-de-sac that offers good sized accommodation arranged around a central hallway, that is in need of general updating and improvements. The property features a spacious living room, with two bedrooms, a separate kitchen, bathroom and a large walk-in internal storage room, ideal for housing bicycles or larger storage items. The property will be offered with the benefit of a new 125 year lease, has double glazing and gas central heating, as well as its own private outdoor space.

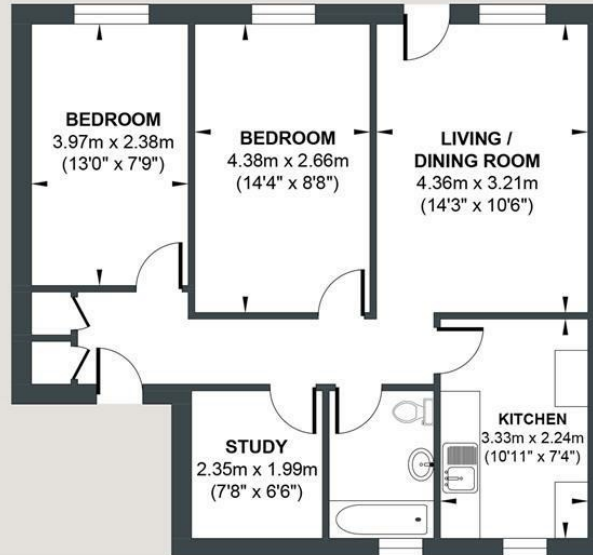


- New 125 year lease
- Two double bedrooms
- Garden
- Ideal for first time buyers



## SERRIN WAY

Approx. Gross Internal Floor Area = 60.31 sq m / 649.17 sq ft  
Illustration for identification purposes only, measurements are approximate, not to scale.



### GROUND FLOOR FLAT

**Approximate Floor Area**  
649.17 sq ft  
(60.31 sq m)



Foster & Co and their clients give notice that:

These sales particulars do not constitute any part of an offer of contract and are for guidance for prospective purchases only and should be not relied upon as a statement of fact.

We are not to be held responsible for material information that has not been given to us by our client at the time of marketing.

All measurements are approximate





