



Chamberlayne Road, NW10

£550,000

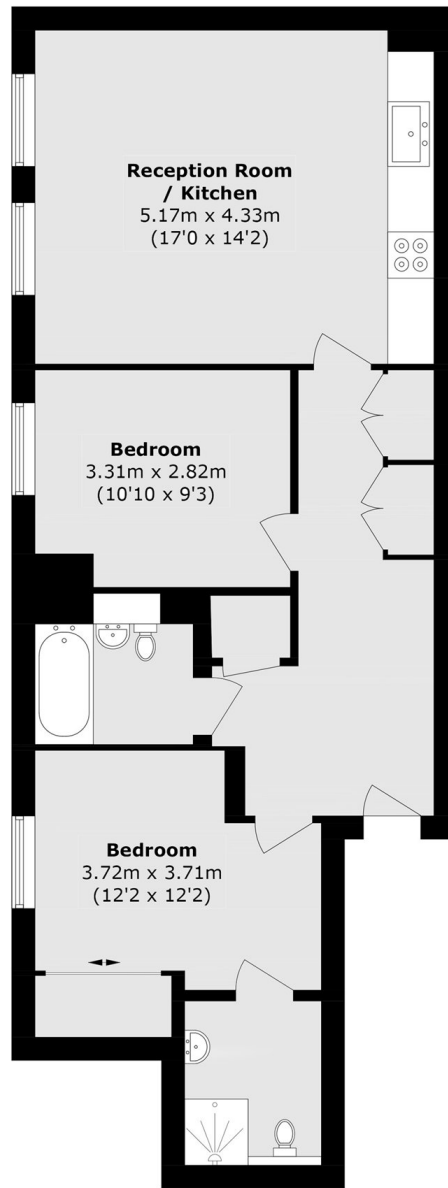
A spacious two double bedroom flat in a secure modern development, with two bathrooms and two communal roof terraces. The property benefits from having an open plan kitchen and reception, lift access, secure underground parking that is allocated, and is available chain-free.

Chamberlayne Road hosts the shops, cafes, restaurants and bars for Kensal Rise, has the green open spaces of Queen's Park close by, with Maida Vale and Notting Hill easily accessible. Transport links include Kensal Rise (Overground), Kensal Green (Bakerloo Overground) and Queen's Park (Bakerloo and Overground).

Features

- Two Double Bedrooms
- Open Plan Kitchen & Reception
- Allocated Parking
- Lift Access
- Communal Roof Terraces
- Close To Local Amenities

Chamberlayne Road, London, NW10



Total area (approx.): 66.2 sq. m (712.5 sq. ft)