

BURDALE HOUSE

Scagglethorpe, North Yorkshire



BURDALE HOUSE

Superb, new build village house within a boutique development close to Malton

*Rillington 1½ miles • Malton 3 miles • York 21 miles
Scarborough 19 miles*

Porch • entrance and staircase hall • cloakroom/wc • sitting room • kitchen/dining room • utility room

Principal bedroom suite with dressing room & shower room • 3 further double bedrooms • house bathroom

Integral garage • off-street parking

Landscaped gardens

For Sale Freehold

Blenkin
& Co
ESTABLISHED 1992



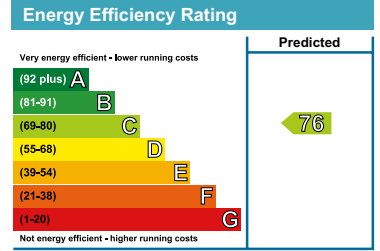
Burdale House, The Warrens, Scagglethorpe, North Yorkshire YO17 8FL

Approximate Gross Internal Floor Area

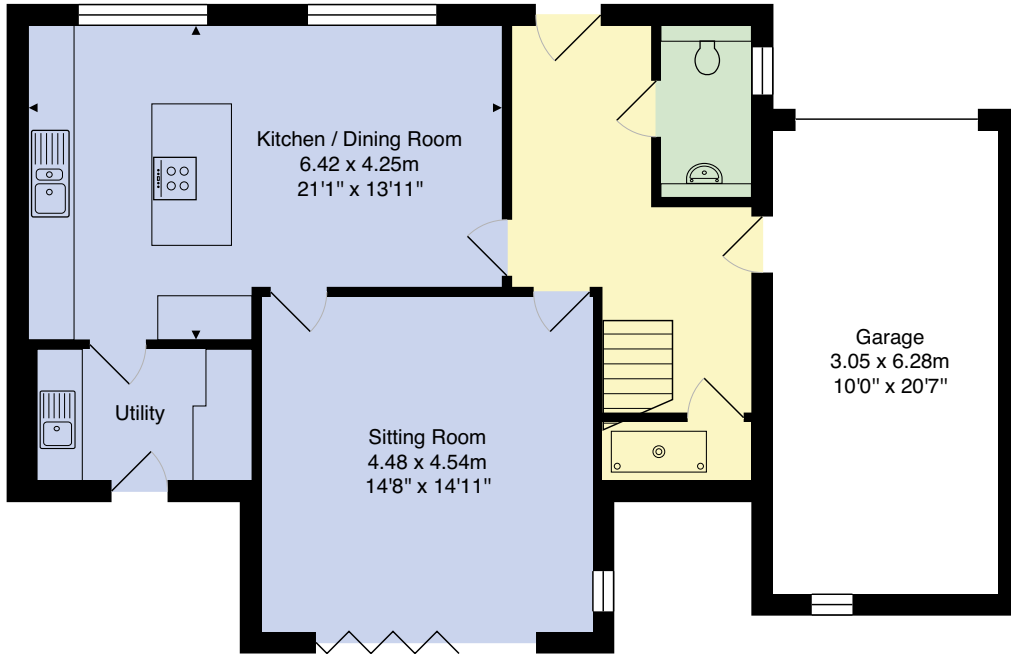
Main House - 145.7 SQ M / 1568 SQ FT - (Excluding Garage)

Total - 166.3 SQ M / 1790 SQ FT

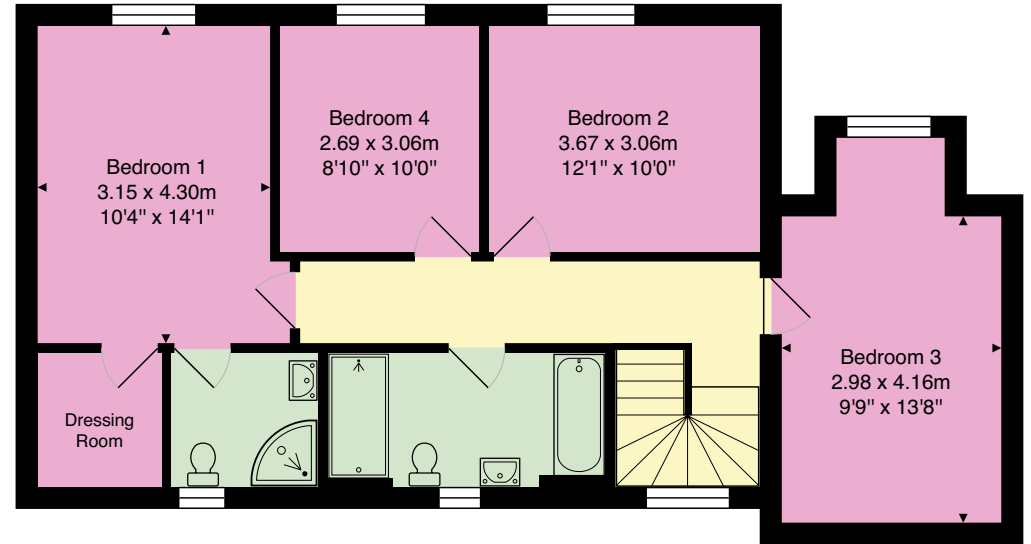
For identification only. Not to scale. All Measurements and fixtures including doors and windows are approximate and should be independently verified.



Ground Floor - (Excluding Garage)
Area: 69.4 m² ... 747 ft²



First Floor
Area: 76.3 m² ... 821 ft²



City

Country

Coast



Burdale House is an attractive new-build residence situated within a boutique development in the village of Scagglethorpe, just three miles from the historic market town of Malton. The home balances contemporary style with day-to-day functionality and comes with a secure garage and gardens to three sides.

- Semi-detached house with integral garage
- Beautifully laid-out living accommodation extending to nearly 1800 sq ft
- Expertly built by Scothern Developments Ltd, a renowned Yorkshire construction firm

- High-tech home with Wi-Fi facilities built in and energy-efficient, designed for sustainability
- Landscaped gardens on three sides
- Convenient village location within walking distance of the local pub
- Superb accessibility: under 10 minutes to Malton, 30 minutes to York and the coast

This semi-detached house is faced in brick under a pantile roof and features a thoughtful layout and some fine craftsmanship. At the front, its oak-framed porch is complemented by oak internal doors and oak kitchen worktops and stands.



Tenure: Freehold

EPC Rating: C, SAP rating: 76

Services & Systems: All mains services. LPG gas central heating. High speed Fibre Optic Broadband. RJ45 Ethernet wall port/sockets next to 3 TV outlets.

Fixtures & Fittings: All items in the written text of these particulars are included in the sale. All others are expressly excluded regardless of inclusion in any photographs. Purchasers must satisfy themselves that any equipment included in the sale of the property is in satisfactory order.

Local Authority:

North Yorkshire Council
www.northyorks.gov.uk

Money Laundering

Regulations: Prior to a sale being agreed, prospective purchasers are required to produce identification documents in order to comply with Money Laundering regulations. Your co-operation with this is appreciated and will assist with the smooth progression of the sale.





The open-plan kitchen/dining room is a superb family space providing ample space for a dining table and illuminated by south facing light through two large windows. The Howdens kitchen features solid wood cabinetry and is fitted with premium AEG integrated appliances including a dishwasher, oven, microwave and an induction hob with downdraft extractor. The adjacent utility room, with external access, comes with a sink, black Samsung washing machine and heat pump drier.

The sitting room is beautifully proportioned with bi-fold doors that open wide onto a landscaped garden terrace - a private space sheltered by a high wall of heritage brick.

From the hall, a turning staircase rises past a window on the landing and gives access to all four double bedrooms and house bathroom. The principal bedroom suite faces south and includes an en suite dressing room and shower room with a window. Bathroom fittings are all high-quality Ideal Standard.

Outside

A private road leads into The Warrens. Burdale House has a formal front garden with lawn and planted borders set behind elegant estate railings and a laurel hedge. A paved pathway of silver granite leads to the front door and continues to the rear. A driveway with motion-sensor lighting provides parking for one car in front of the integral single garage, which includes an EV charger, electric doors (app/remote-controlled), power and lighting.



Practical features include an outside tap and a dedicated recycling/refuse area.

The enclosed rear garden is defined by a recently refurbished historic wall on its northern boundary, with a raised brick-built planted with well-established shrubs. A paved terrace with a border edge is flanked by lawn either side, providing a private, relaxing outdoor space.

Environs

Standing midway between York and Scarborough and surrounded by open countryside, the village of Scagglethorpe lies just three miles east of Malton, on the historic marches of the great estates of Birdsall and Settrington. To one side stretches the Vale of Pickering, while to the other rise the Yorkshire Wolds, with the Howardian Hills close by. The village features a green with a Sycamore tree planted to commemorate Queen Victoria's Golden Jubilee, the much-loved village pub, The Ham & Cheese Inn, a village hall dating from 1844, and children's playgrounds and playing fields. Footpaths extend from the village all the way to the river Derwent.

Within walking and cycling distance, the neighbouring village of Rillington offers a range of local amenities, including a doctor's surgery, primary school, shop and post office, pub, butcher and fish and chip shop.

Malton provides a wide range of amenities and a rail connection to York's mainline station. The nearby estate village of Settrington offers a primary school, with prep school education available in Terrington, approximately 14 miles away. Secondary schooling is available in Norton and Malton, with independent schools in Ampleforth, Scarborough, and York. The village benefits from an excellent bus service, while the nearby A64 trunk road links Scarborough to Leeds via York, ensuring easy access to the wider region.



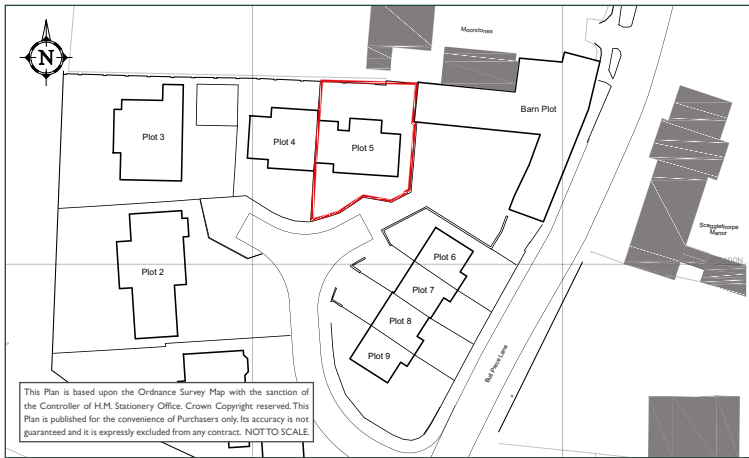
Directions

From the A64 between Malton and Rillington, take a right hand turn into the village and continue through where there is a right hand turn that takes you into the development. Burdale House lies directly opposite, the right of the two semis.

What3words: ///furnish.rave.shaped

Viewing

Strictly by appointment.



Priestley House, 36 Bootham
York, YO30 7BL
sales@blenkinandco.com
01904 671672

blenkinandco.com



53 Market Place, Malton
North Yorkshire, YO17 7LX
malton@rounthwaite-woodhead.co.uk
01653 600747

rounthwaite-woodhead.co.uk



Important notice 1. No description or information given about the property or its value, whether written or verbal or whether or not in these Particulars ("Information") may be relied upon as a statement or representation of fact. Neither Blenkin & Co nor its Joint Agents have any authority to make any representation and accordingly any Information given is entirely without responsibility on the part of Blenkin & Co or the seller/lessor. 2. Any photographs (and artists' impressions) show only certain parts of the property at the time they were taken. Any areas, measurements or distances given are approximate only. 3. Any reference to alterations to, or use of any part of the property is not a statement that any necessary planning, building regulations or other consent has been obtained. These matters must be verified by any intending buyer/lessee. 4. Any buyer/lessee must satisfy himself by inspection or otherwise as to the correctness of any Information given. **NB:** Google map images may neither be current nor a true representation. **Photographs, property spec and video highlights:** Spring 2026. Brochure by wordperfectprint.com

