



 2

 1

 1

 C

DavidJames
the estate agent

Gamble Street, Nottingham, NG7 4ET

£975 Per Calendar Month

About This Property

This fully furnished 2-bedroom ground-floor flat is situated in the Royal Victoria Court apartment complex and has been redecorated throughout. The spacious open-plan living, dining, and kitchen area is designed to create a comfortable and welcoming environment, enhanced by large windows that allow natural light to flood the space. The new kitchen is equipped with appliances including oven, hob, washing machine and fridge freezer. Both double bedrooms are furnished with ample storage, including wardrobes and desks, ideal for extra storage. The bathroom/WC features a white suite with a shower over the bath. This flat benefits from secure gated parking and is conveniently located close to transport links, including nearby tram services.

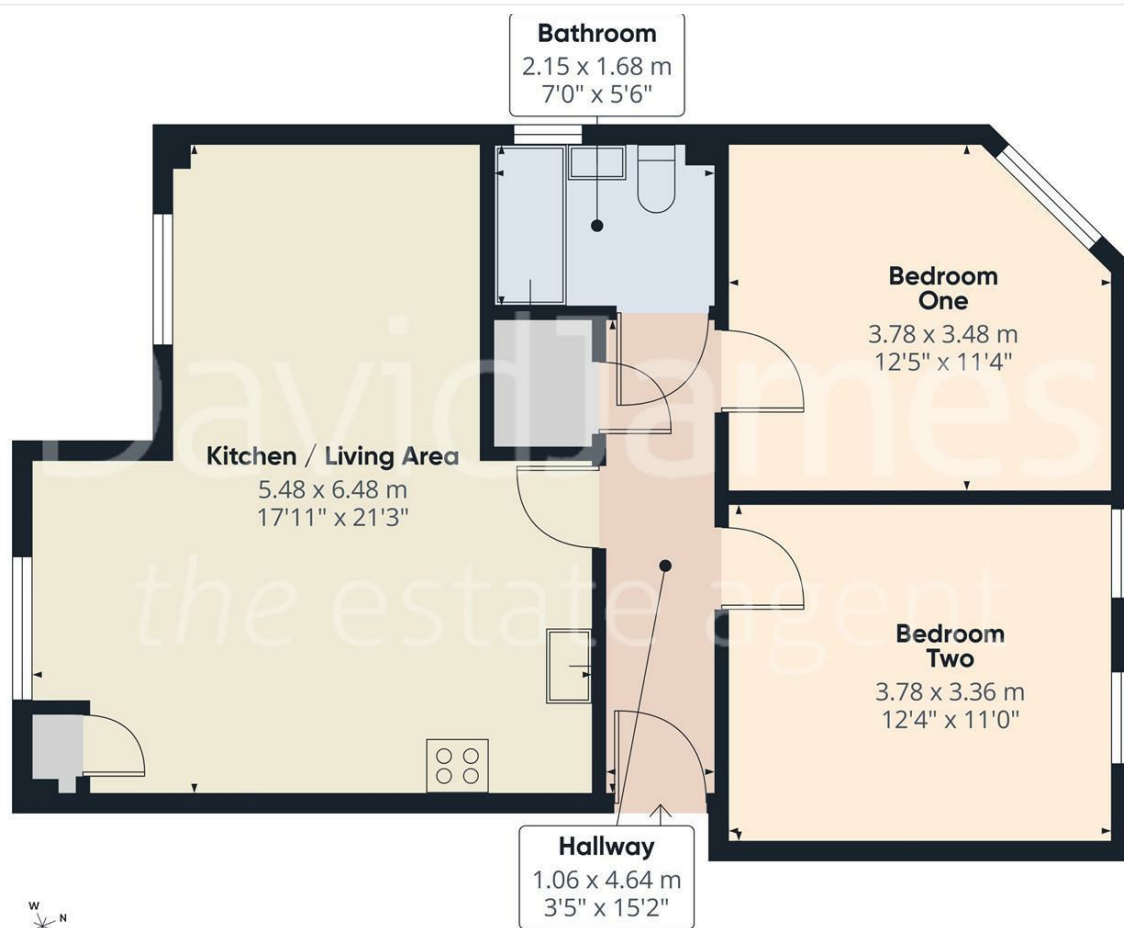
TENANCY DETAILS

Available From: NOW
Furnishing: Furnished
EPC Rating: C
Council Band: B

- Ground-floor flat in Royal Victoria Court
- Fully furnished and redecorated throughout
- Two double bedrooms
- Open-plan living, dining, and kitchen area
- New kitchen with appliances
- Bathroom/WC with over the bath shower
- Large windows throughout, allowing plenty of natural light
- Gas central heating and double glazed windows
- Secure gated parking
- Convenient transport links, including nearby tram service





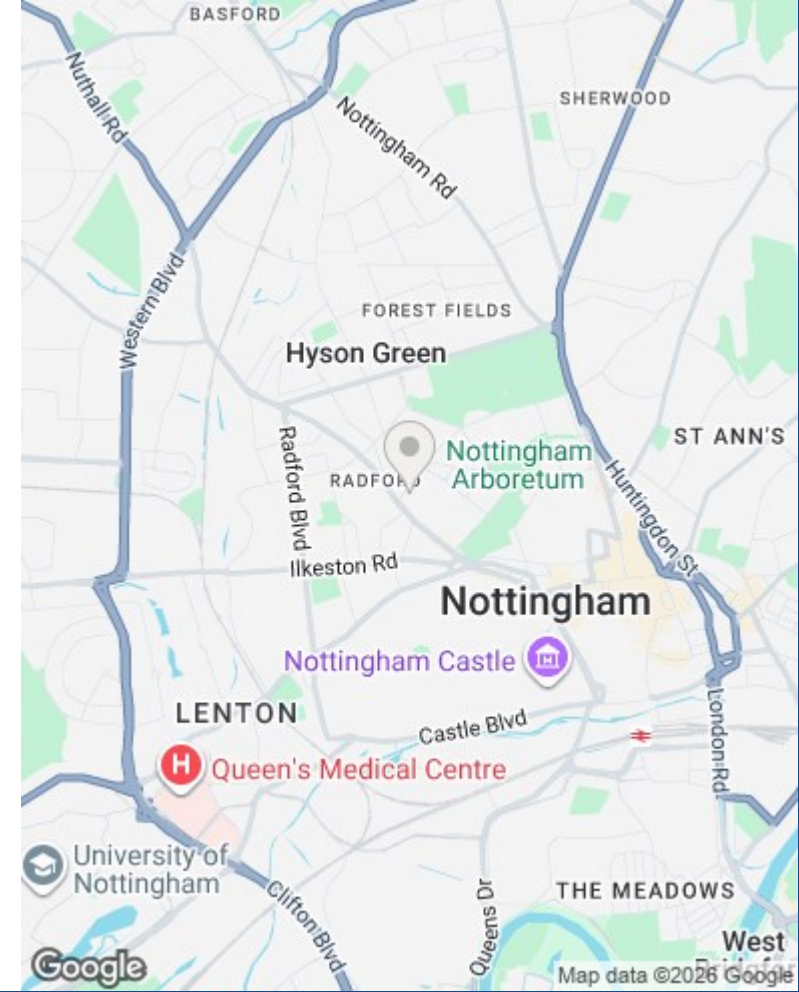


Approximate total area⁽¹⁾
63.1 m²
680 ft²

(1) Excluding balconies and terraces

Calculations reference the RICS IPMS 3C standard. Measurements are approximate and not to scale. This floor plan is intended for illustration only.

GIRAFFE360



These particulars are produced in good faith, are set out as a general guide only and do not constitute any part of a contract. No person in the employment of David James Estate Agents Ltd has any authority to make any representation whatsoever in relation to the property. All services, together with electrical fittings or fitted appliances have NOT been tested. All the measurements given in the details are approximate. Floor plans are for illustrative purposes only and are not drawn to scale. The position and size of doors, windows, appliances and other features are approximate only. The photographs of this property have been taken with a 10mm wide-angle lens. No responsibility can be accepted for any loss or expense incurred in viewing. If you have a property to sell you may wish to take advantage of our free valuation service. David James Estate Agents have established professional relationships with third-party suppliers for the provision of services to Clients. As remuneration for this professional relationship, the agent receives referral commission from the third-party company. David James Estate Agents receives the following commission from each third party supplier on a per referral basis: W A Barnes Ltd: £60 including VAT. All Moves UK Ltd: 18% including VAT of the invoice total (£107 including VAT average). MoveWithUs Limited: £188 including VAT (average).

Council Tax Band: B
Nottingham City Council



David James Estate Agents
45b Plains Road, Mapperley, Nottingham, NG3 5JU
t: 0115 962 4213 e: lettings@david-james.com

