



Property Webb  
At the HEART of your move

## Bluebell Glade, Adambrae, Livingston, EH54 9JJ

Offers Over £310,000



Situated in the popular Adambrae area of Livingston, this impressive 3/4 bedroom detached home has been thoughtfully extended to create exceptional family living space. Offering a versatile second reception room ideal as a home office, playroom or TV room, a spacious lounge with feature fireplace, a superb full-width rear extension and a landscaped south-west facing garden, this is a home designed for modern family life. Complete with an integral garage, generous driveway and en-suite principal bedroom, Bluebell Glade offers flexible accommodation in a sought-after location close to excellent schools, amenities and transport links.

01506 637553

info@property-webb.co.uk

www.property-webb.co.uk

71 South Bridge St, Bathgate, EH48 1TJ

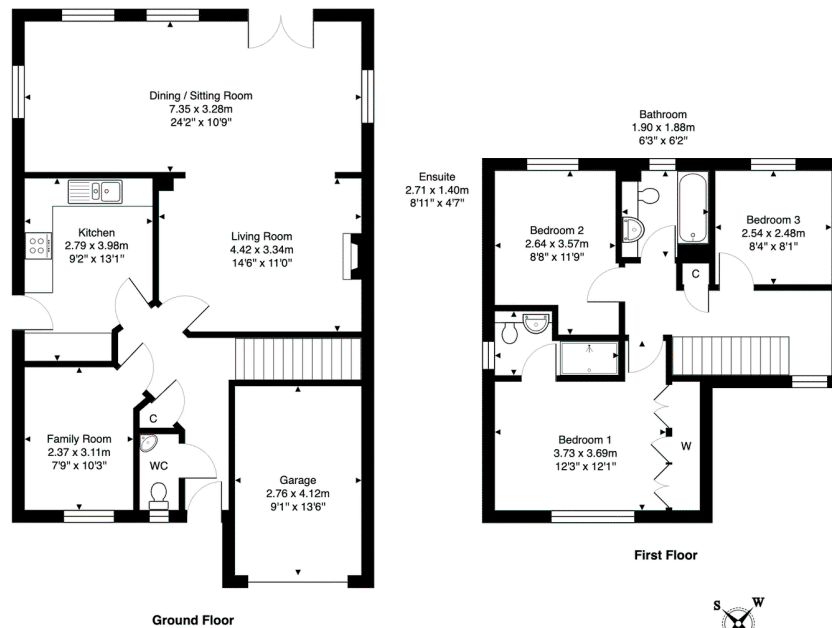


Property Webb  
At the HEART of your move

## Key Features

- Extended detached villa
- Lounge/dining/family space
- Modern kitchen
- 2 further bedrooms
- Garage & large driveway
- Excellent family home
- Additional public room
- Main bedroom with En-suite
- Landscaped South facing garden
- Sought after location

16 Bluebell Glade, Adambrae, Livingston, EH54 9JJ



Total Area: 116.1 m<sup>2</sup> ... 1250 ft<sup>2</sup> (excluding garage)  
All measurements are approximate and for display purposes only.

01506 637553

info@property-webb-co.uk

www.property-webb.co.uk

71 South Bridge St, Bathgate, EH48 1TJ