

LEASEHOLD



House - Semi-Detached

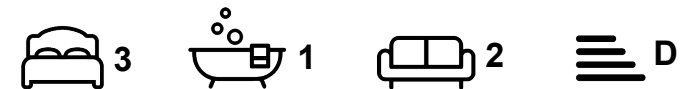
WARMINSTER ROAD, SHEFFIELD, S8

Guide price

£280,000

FEATURES

- Three-bedroom semi-detached with excellent long-term potential
- South-west facing garden with lawn, decking and pergola
- Block paved driveway providing off-road parking for two cars
- Converted garage providing versatile workshop space
- Conservatory overlooking the rear garden




HIGHGATES
SALES & LETTINGS

3 Bedroom House - Semi-Detached located in Sheffield

Guide Price £280,000 - £300,000

A traditional three bedroom semi detached home occupying a generous south-west facing plot on one of S8's well established residential roads. Filled with natural light and offering exceptional flexibility, this is a house where the potential is immediately apparent.

Call us on

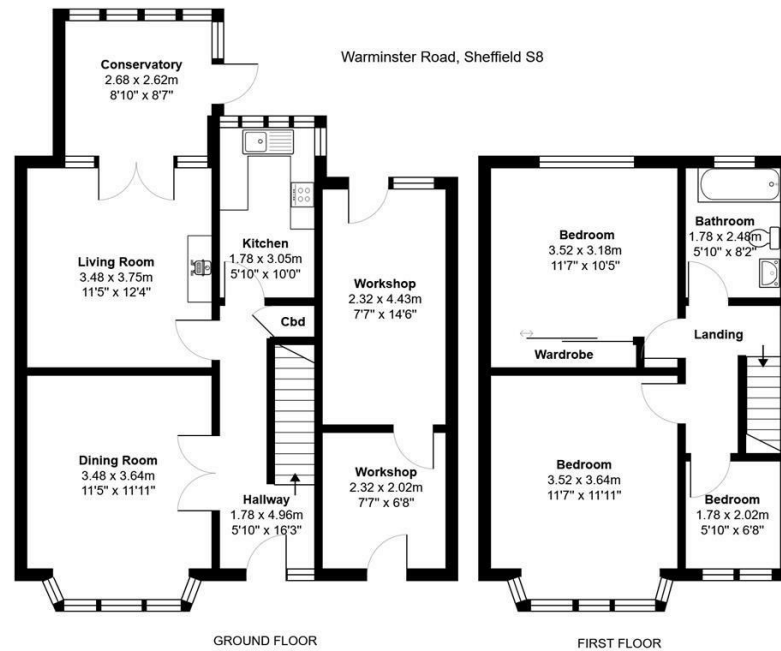
0114 312 4994

info@highgatesstates.co.uk

www.highgatesstates.co.uk

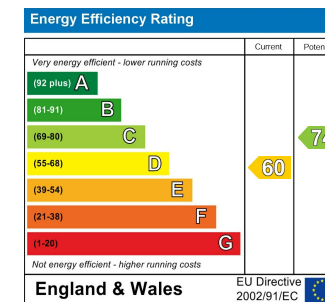
Council Tax Band

B



Total Area: 112.1 m² ... 1207 ft²

All measurements are approximate and for display purposes only



Agents Note: Whilst every care has been taken to prepare these particulars, they are for guidance purposes only. All measurements are approximate and are for general guidance purposes only and whilst every care has been taken to ensure their accuracy, they should not be relied upon and potential buyers are advised to recheck the measurements.