

3
BED

Spacious Bungalow in a Sought After Location

24, Northcote Lane, Peacehaven, BN10 7ED



Price £425,000

Freehold

phillipmann
we do more

www.phillipmann.com

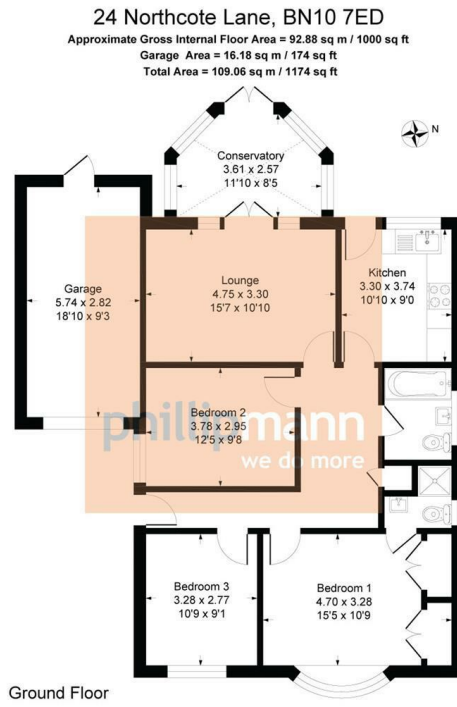


Illustration for identification purposes only, measurements are approximate, not to scale

inbrief...

We are delighted to offer for sale this three bedroom detached bungalow located in this quiet and popular close in Telscombe Cliffs, Northcote Lane. As you approach the property in the pleasant cul de sac, benefits include off road parking, garage with power, lighting and electric roller door, front garden and side path. The L shaped spacious hall provides access to all rooms and useful cupboard space.

Bedroom one is a good size double room with double inset wardrobes and ensuite shower room. bedroom two, currently dressed as a dining room is also a double bedroom with window to side whilst bedroom three is a smaller double overlooking the front. The main bathroom comprises; bath with mixer tap and handheld shower attachment, pedestal wash basin, w/c and part tiled walls.

The kitchen is fitted with a range of wall and base units with complementing working surface. features include; gas hob with overhead extractor, eye level double oven, inset sink drainer with window and door to rear garden, space for white goods and breakfast table, integral fridge freezer and tiled floor and splash back.

The lounge is situated at the rear of the property and has ample space for all soft furnishings with french doors opening into the conservatory. The conservatory is a nice addition with tiled flooring and full height windows with french doors to admire the rear garden.

The west facing rear garden has patio areas, lawn covering with centre path. Mature stocked borders add character to the garden with a useful rear door to garage.

VIEWINGS ADVISED



EPC - D

Council Tax Band - E

moreinfo...



Phillip Mann Peacehaven Office
 226-230 South Coast Road, Peacehaven, BN10 8JR
 01273 586622

To see more details on this & all our homes go to
www.phillipmann.com