



**Westferry Road, E14**

**£650,000**

**Dexters**



## Westferry Road, E14

Positioned within the sought after Ocean Wharf development, this well-presented two bedroom, two bathroom apartment benefits from direct west facing river frontage and views across the River Thames.

Offering approximately 868 sq. Ft of internal accommodation and 127 sq. Ft of outdoor space, this apartment benefits from a highly desirable dual aspect position with south and west facing windows, allowing natural light throughout the day. The property also overlooks the attractive riverside park adjacent to the development, creating a peaceful outlook alongside river views. The contemporary kitchen is fitted with a range of integrated appliances, while both generously sized double bedrooms enjoy direct river views.

The property benefits from excellent transport connections, including the Jubilee line, Elizabeth line and DLR services, providing convenient access to Canary Wharf, the City and beyond.

### Features

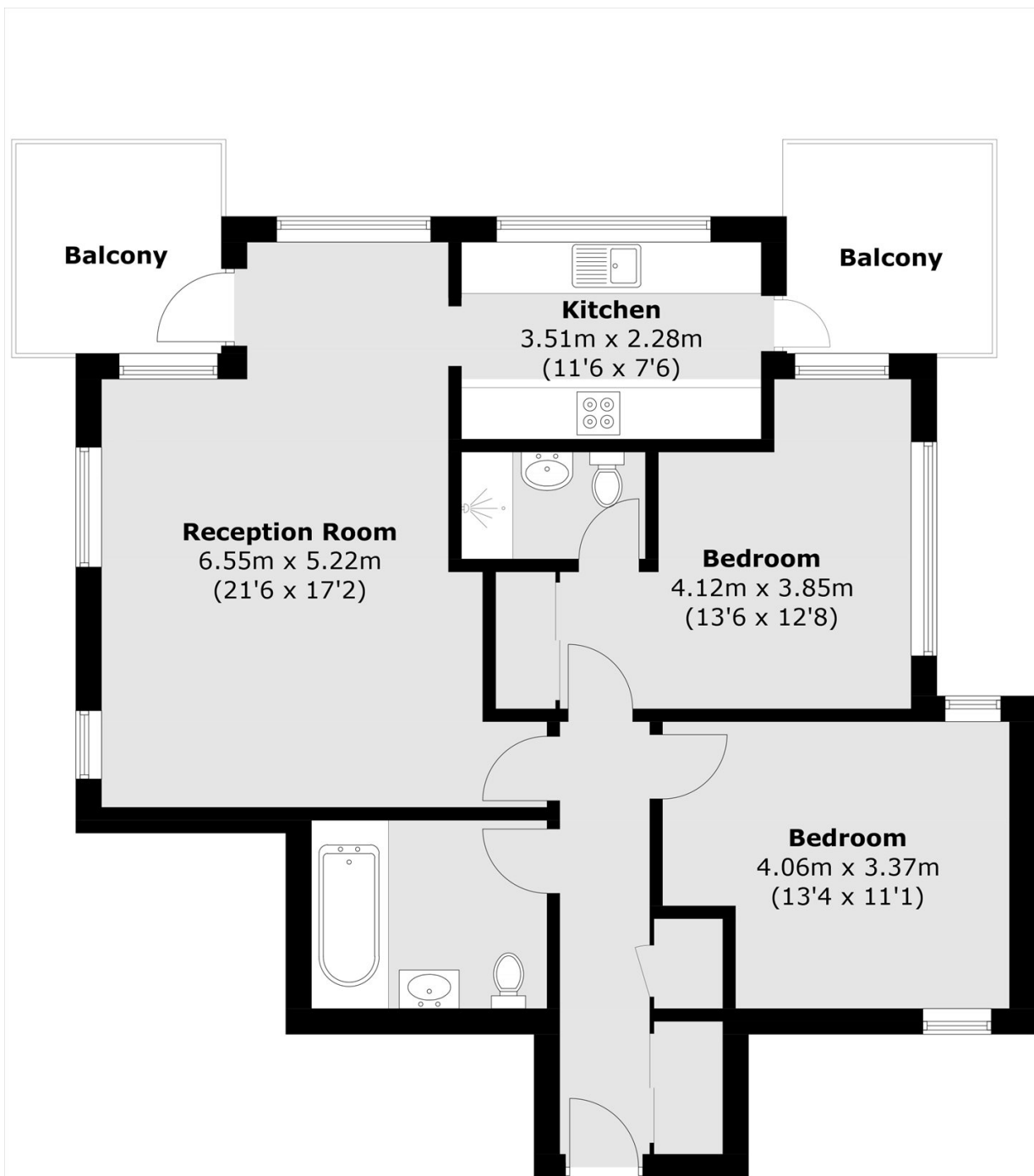
- Two Bedrooms
- Two Bathrooms
- Uninterrupted River Views
- Two Allocated Parking Spaces
- South and West Aspect
- Residents' Gym & Concierge







# Westferry Road, London, E14



Total area (approx.): 80.7 sq. m (868.6 sq. ft)  
Balcony : 11.8 sq. m (127.0 sq. ft)