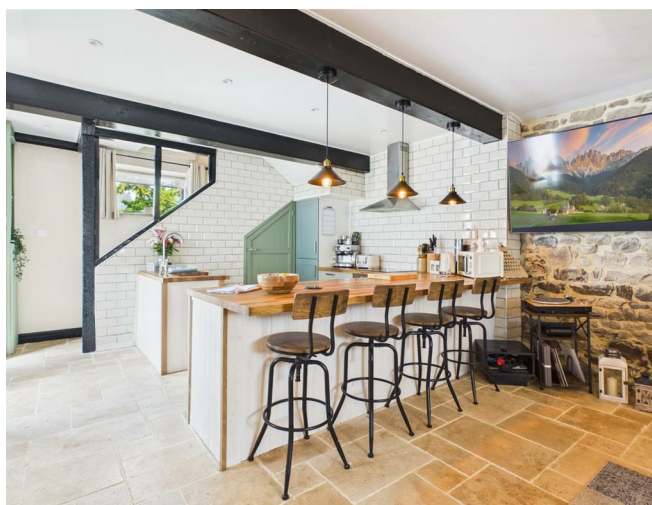


Old Barn Main Street, Heysham, Morecambe, LA3 2RN



£235,000



Head Office: 83 Bowerham Road Lancaster LA1 4AQ
T 01524 548888 E enquiries@mightyhouse.co.uk W www.mightyhouse.co.uk



Mighty House is a trading name of P&PC Surveyors Limited. Registered Office: 70 Daisy Hill, Dewsbury, WF13 1LS. Company no: 06498054

A beautifully restored converted barn, combining timeless character with high-quality contemporary finishes, all set within the heart of the picturesque and highly sought-after Heysham Village.

Lovingly renovated throughout to an exceptional standard, this charming home offers stylish and spacious accommodation while retaining an abundance of character and original charm. Every detail has been thoughtfully considered, creating a home that is ready to move straight into and enjoy.

Step inside to an impressive open-plan living space, where a beautifully appointed contemporary kitchen with a stylish breakfast bar flows seamlessly into the inviting lounge. A striking exposed stone feature wall adds warmth and character, creating a wonderful focal point and blending the property's period charm with modern living.

Upstairs, the first floor offers a spacious principal bedroom complete with a dedicated dressing area, together with a second bedroom, currently utilised as a home office, providing flexibility for a variety of lifestyles. The accommodation is completed by a beautifully finished contemporary bathroom, fitted to a high standard. Externally, the property benefits from the added convenience of off-road parking to the rear, a rare and valuable feature within the heart of Heysham Village.

Ideally positioned just a short stroll from the village centre, the property enjoys the best of coastal living. The historic waterfront, scenic promenade and iconic St Peter's Church are all within easy walking distance, offering stunning coastal

views across Morecambe Bay towards the Lakeland fells. Heysham Village itself boasts a friendly community atmosphere with independent cafés, traditional pubs, everyday amenities and well-regarded primary and secondary schools all close by.

For those needing to travel further afield, excellent transport links are readily available, with the Bay Gateway providing convenient access to the M6 motorway.

Kitchen



Oak stable door to the front, double glazed window to the side, built in cupboard housing the gas & electric meters, beautiful bespoke kitchen with a range of fitted cabinets finished in a period green with English oak work surfaces, ceramic butlers sink, four plate Induction hob and extractor hood, electric oven, integrated dishwasher and fridge/freezer, travertine tiled flooring, walk in pantry with plumbing for washing machine, stairs to the first floor.

Lounge



Double glazed window to the side, feature stone wall, beamed ceiling, breakfast and dining bar, travertine flooring, radiator.

First Floor Landing



Beamed ceiling, carpeted flooring, access to the loft.

Bedroom One



Double glazed window to the rear, beamed ceiling, engineered wood flooring, radiator.

Dressing Room Area



Double glazed window to the rear, engineered wood flooring.

Bedroom Two

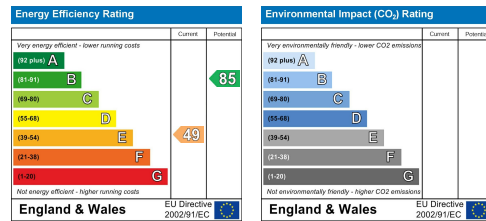


Double glazed Velux window, engineered wood flooring, radiator.

convenience of off-road parking, a highly desirable feature in the heart of Heysham Village.

Useful Information

Tenure Freehold
Council Tax Band B) £1,947
Renovated throughout with new floorings, new kitchen and bathroom,



Bathroom



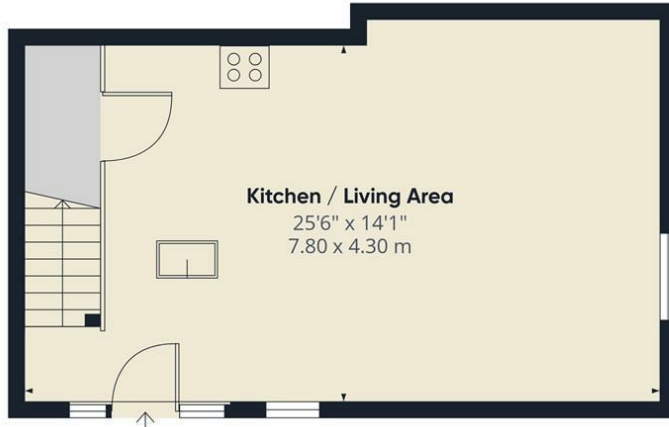
Double glazed windows to the front and side, free standing claw foot bath with shower attachment, vanity unit with inset wash hand basin and understorage, wood panelling, cupboard housing the combi boiler, heated towel rail, tiled flooring, W.C.

Outside

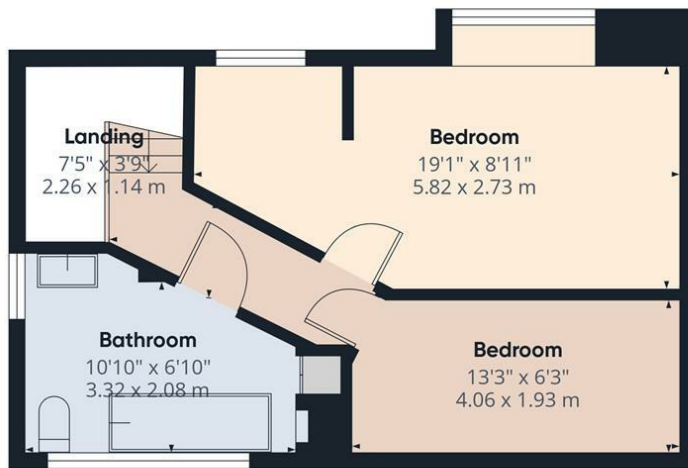


Externally, the property enjoys a charming walled front garden with a paved patio seating area, steps leading down to an attractive cobbled garden, creating a delightful space to sit and enjoy the surroundings. To the rear, the property benefits from the added





Ground Floor



Floor 1



Approximate total area⁽¹⁾
720 ft²
66.8 m²

(1) Excluding balconies and terraces

Calculations reference the RICS IPMS 3C standard. Measurements are approximate and not to scale. This floor plan is intended for illustration only.

GIRAFFE360



Head Office: 83 Bowerham Road Lancaster LA1 4AQ
T 01524 548888 E enquiries@mightyhouse.co.uk W www.mightyhouse.co.uk



Mighty House is a trading name of P&PC Surveyors Limited. Registered Office: 70 Daisy Hill, Dewsbury, WF13 1LS. Company no: 06498054