



£290,000

5 Brompton Court St. Stephens Road, Bournemouth, BH2 6JS



SAXE COBURG™

Property Experts







Nestled on St. Stephens Road in the charming coastal town of Bournemouth, this delightful end-of-terrace retirement bungalow offers a perfect blend of comfort and convenience. Built in 2002 and completely refurbished in 2017, the property spans an impressive 855 square feet, providing ample space for relaxed living.

The bungalow features two generously sized double bedrooms, each equipped with fitted wardrobes, ensuring plenty of storage for your belongings. The well-appointed bathroom boasts both a low-level bath and a walk-in shower, catering to your needs with ease and accessibility.

The spacious living room is a highlight of the home, offering lovely views over the meticulously maintained gardens, creating a serene atmosphere for relaxation or entertaining guests. The fully fitted kitchen comes complete with integrated appliances, making meal preparation a pleasure.

Additionally, the property benefits from off-road parking, providing convenience and peace of mind. This bungalow is ideally suited for those seeking a tranquil retirement lifestyle in a welcoming community, with the added advantage of being close to local amenities and the beautiful Bournemouth coastline.

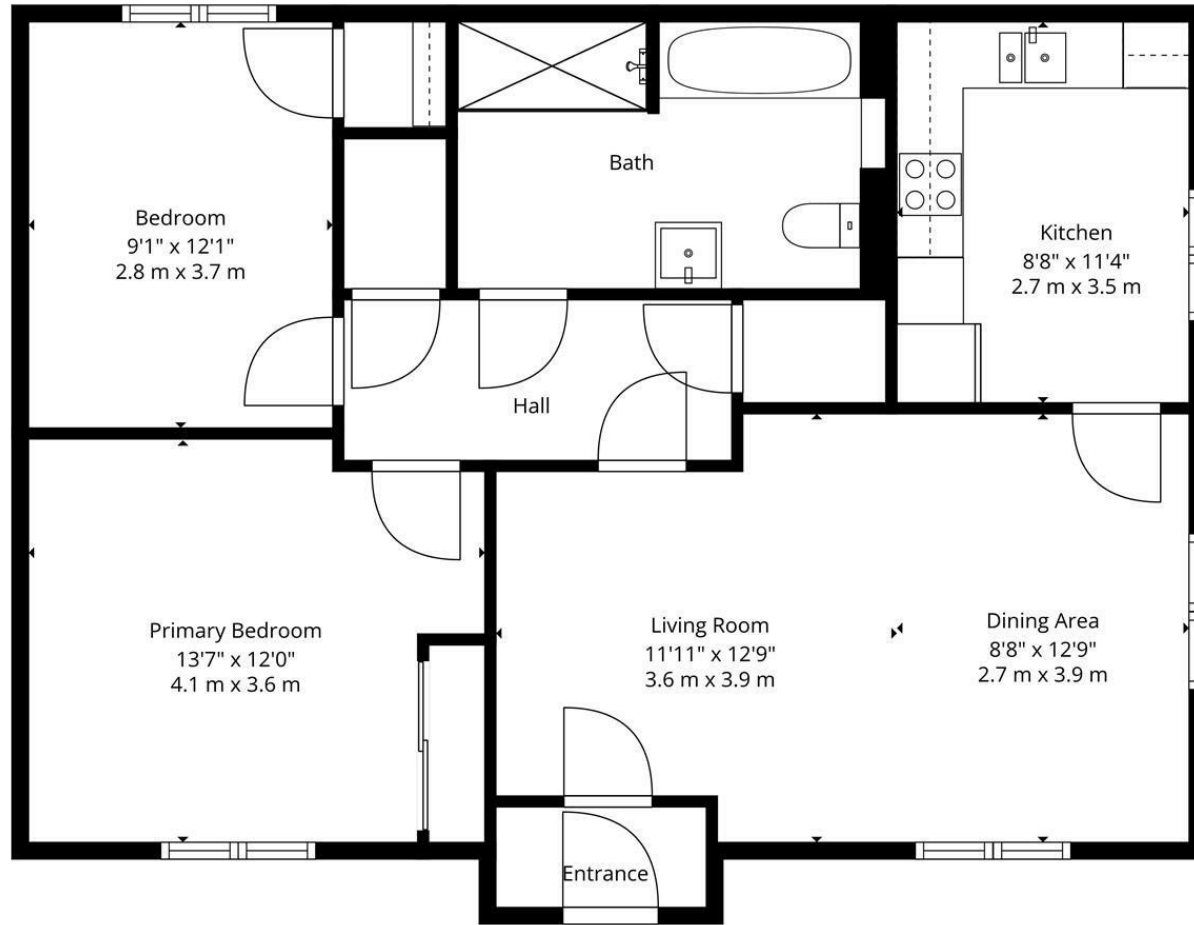
This charming property is not to be missed, offering a wonderful opportunity for comfortable living in a sought-after location.



Situated within Brompton Court, a peaceful retirement village comprising 65 owner-occupied apartments and 5 highly desired owner-occupied bungalows. The community spans several attractive buildings with secure gates, a private car park, an on-site restaurant, a community chapel used for events and gatherings, spacious communal halls, and beautifully landscaped walking paths. The complex is professionally staffed and managed, with 24-hour emergency call buttons in each apartment and a warm, supportive environment throughout. Being in this ideal location you are within easy access to Bournemouth town centre with a wide range of local shops, cafes, restaurants and Bournemouth beach.

FEATURES & SPECIFICATIONS

- End of terrace retirement bungalow
- 2 double bedrooms
- Fitted wardrobes included
- Refurbished in 2017
- Spacious living room
- Garden views
- Modern kitchen appliances
- Off road parking
- Located in Bournemouth
- Viewing recommended



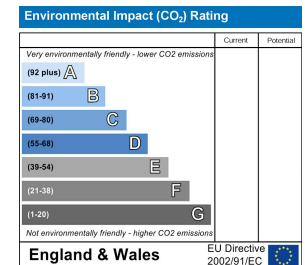
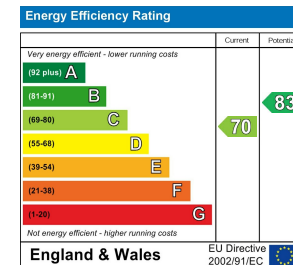
TOTAL: 855 sq. ft, 79 m2
 FLOOR 1: 855 sq. ft, 79 m2
 EXCLUDED AREAS: WALLS: 62 sq. ft, 6 m2

Whilst Every Attempt Has Been Made To Ensure The Accuracy Of This Floor Plan. All Measurements Are Approximate And For Display Purposes Only. Created By Property Photography Group.



Disclaimer: These particulars are believed to be correct, but their accuracy is not guaranteed and they do not constitute an offer or contract. Strictly subject to contract, all measurements are approximate.

Agents Note: At no time have we undertaken a structural survey and services have not been tested. Interested parties should satisfy themselves to the structural integrity of the premises and condition / working order of services, plants and equipment





<https://www.saxecoburg.co.uk>

47 Poole Road, Westbourne, Bournemouth, Dorset, BH4 9BA

T: 01202 303066 info@saxecoburg.co.uk



SAXE COBURG™

Property Experts