



2 Maple Mews, London, E3 4ZB

£669 Per Week

TWO BEDROOM TWO BATHROOM 2ND FLOOR APARTMENT IN BOW GREEN E3

BRAND NEW ZONE 2 DEVELOPMENT WITH AMAZING FACILITIES & HIGH SPECIFICATION

FACILITIES INC: INDOOR & OUTDOOR POOLS, GYM, BOXING CLUB, IMAX CINEMA, CONCIERGE, WORKING LOUNGES AND ACRES OF LANDSCAPED GARDENS*

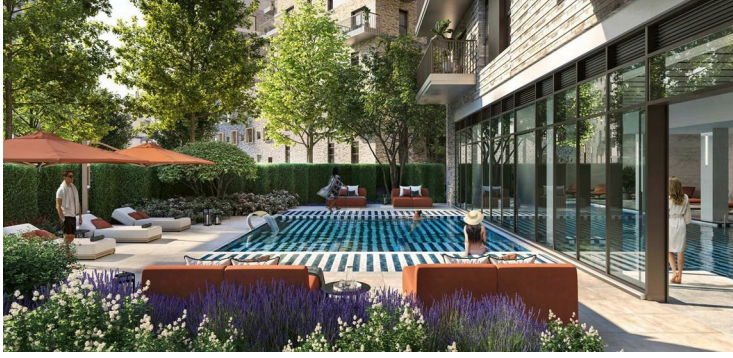
3 STATIONS ALL IN CLOSE PROXIMITY

FURNISHED UPON REQUEST
AVAILABLE NOW

*Not all amenities may be open upon completion of these units.

- BRAND NEW LUXURY DEVELOPMENT
- BOW GREEN E3
- LOCATED BETWEEN THE CITY & CANARY WHARF
- FURNISHED ON REQUEST
- FACILITIES INC 2 POOLS (INDOOR & OUTDOOR)
- GYM, IMAX CINEMA, BOXING CLUB, RES LOUNGES
- ZONE 2, CHOICE OF 3 STATIONS & DLR
- 24 HOUR CONCIERGE
- TWO BEDROOMS & TWO BATHROOMS
- DRESSING ROOM TO MASTER BEDROOM

2 Maple Mews, London, E3 4ZB



DEVELOPERS IMAGES



COMMUNAL LOUNGE AREA



DEVELOPERS IMAGES



COMMUNAL LOUNGE AREA



DEVELOPERS IMAGES



RESIDENTS GAMES ROOM

2 Maple Mews, London, E3 4ZB



RESIDENTS GAMES ROOM



BATHROOM



BOW GREEN



BALCONY



RECEPTION/KITCHEN



BEDROOM

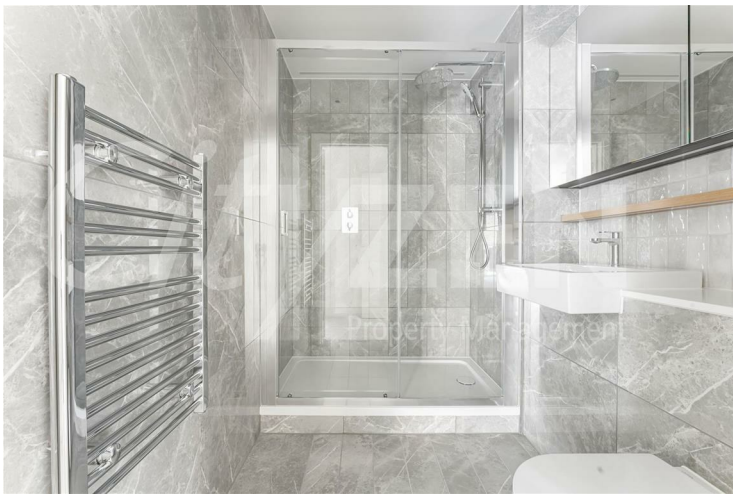
2 Maple Mews, London, E3 4ZB



BEDROOM



RECEPTION



ENSUITE



RECEPTION



BOW GREEN



KITCHEN

2 Maple Mews, London, E3 4ZB



BALCONY



BOW GREEN



VIEW FROM BALCONY



BEDROOM



RECEPTION



BEDROOM

2 Maple Mews, London, E3 4ZB



DRESSING ROOM



BOW GREEN



SWIMMING POOL

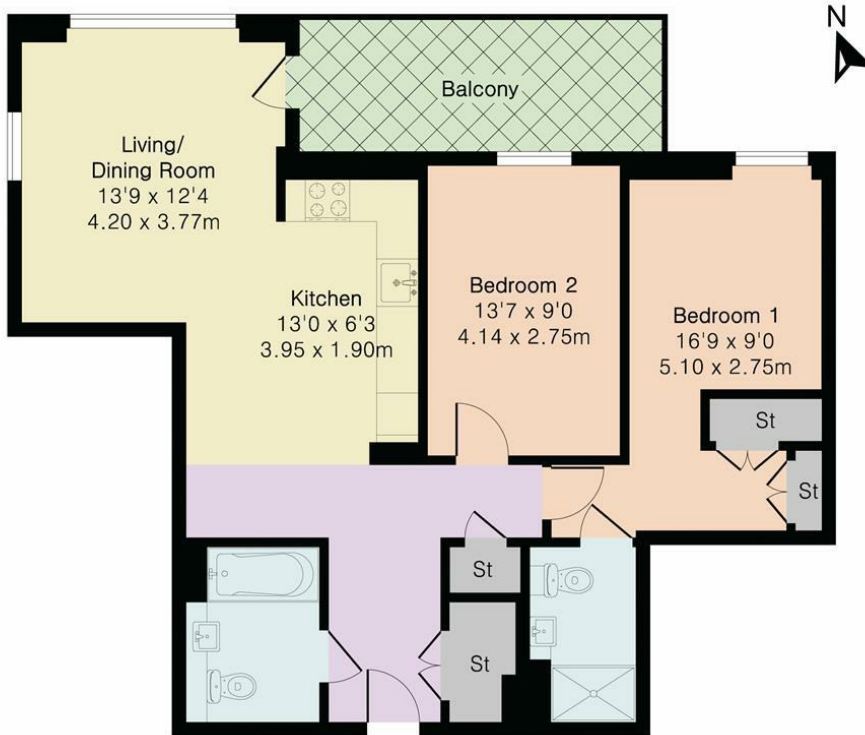


BOXING RING



CINEMA ROOM

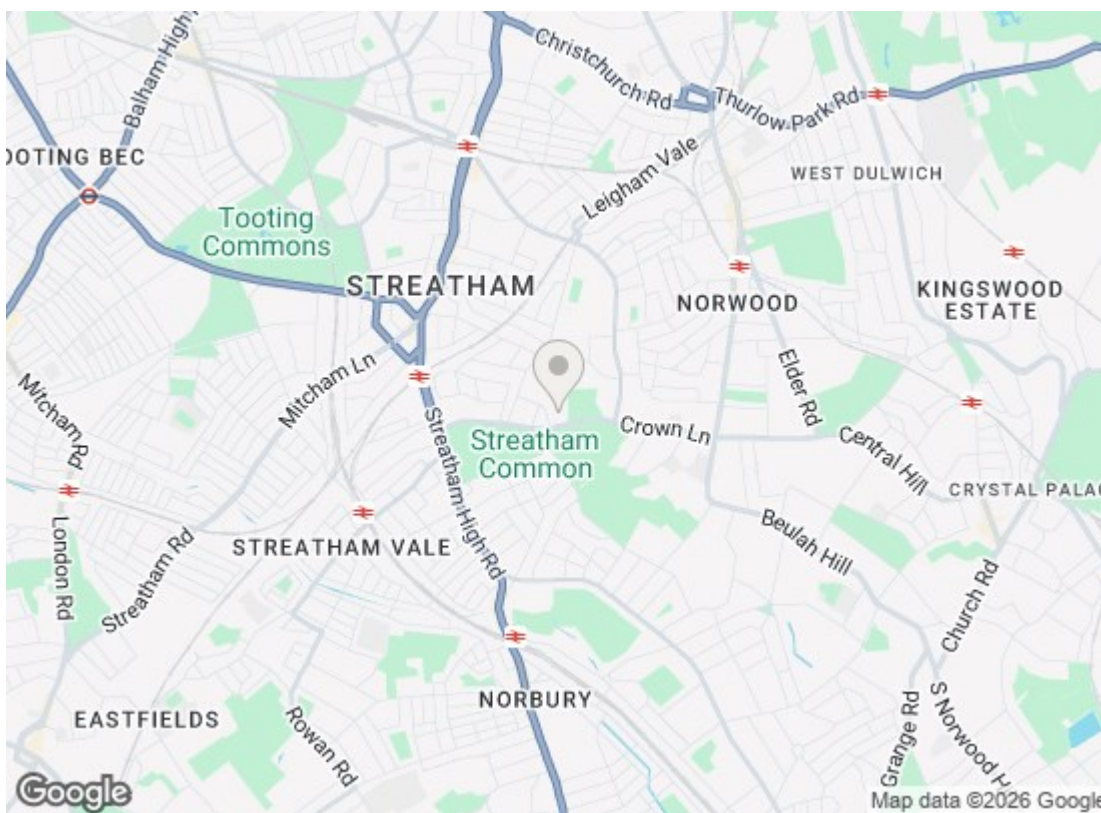
Approximate Gross Internal Area 834 sq ft - 78 sq m



Second Floor



Floor plan produced in accordance with RICS Property Measurement 2nd Edition. Although Pink Plan Ltd ensures the highest level of accuracy, measurements of doors, windows and rooms are approximate and no responsibility is taken for error, omission or misstatement. These plans are for representation purposes only and no guarantee is given on the total square footage of the property within this plan. The figure icon is for initial guidance only and should not be relied on as a basis of valuation.



Energy Efficiency Rating		
	Current	Potential
Very energy efficient - lower running costs		
(92 plus) A		
(81-91) B	85	85
(69-80) C		
(55-68) D		
(39-54) E		
(21-38) F		
(1-20) G		
Not energy efficient - higher running costs		
EU Directive 2002/91/EC		
Environmental Impact (CO ₂) Rating		
	Current	Potential
Very environmentally friendly - lower CO ₂ emissions		
(92 plus) A		
(81-91) B		
(69-80) C		
(55-68) D		
(39-54) E		
(21-38) F		
(1-20) G		
Not environmentally friendly - higher CO ₂ emissions		
EU Directive 2002/91/EC		

We have prepared these property particulars as a general guide to a broad description of the property. They are not intended to constitute part of an offer or contract. We have not carried out a structural survey and the services, appliances and specific fittings have not been tested. All photographs, measurements, floorplans and distances referred to are given as a guide only and should not be relied upon for the purchase of carpets or any other fixtures or fittings. Lease details, service charges and ground rent (where applicable) and council tax are given as a guide only and should be checked and confirmed by your Solicitor prior to exchange of contracts.