



CANFORD CLIFFS ROAD,
CANFORD CLIFFS











DETAILS

Set within the highly sought-after Canford Cliffs Village, this impressive detached residence occupies a generous plot of approximately a quarter of an acre and offers beautifully arranged accommodation across three floors.

The property is exceptionally versatile, featuring five to six well-proportioned bedrooms and four contemporary bathrooms, making it ideal for both family living and guest accommodation. The main floor boasts three elegant reception rooms, providing ample space for formal entertaining, relaxed family living, and home working if required.

Externally, the home continues to impress. A delightful, well-maintained garden surrounds the property, offering privacy and a tranquil setting. The outdoor heated swimming pool provides a luxurious focal point, perfect for enjoying warmer months and entertaining guests. Additional benefits include both a double garage and a separate single garage, ensuring extensive parking and storage options.

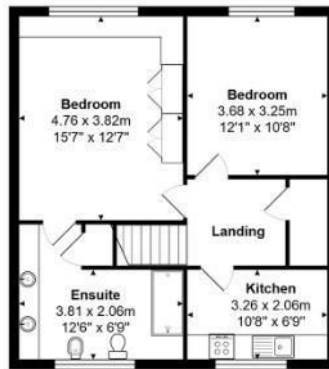
This is a rare opportunity to acquire a substantial home in one of the area's most prestigious locations, combining generous living space, flexibility, and exceptional outdoor features.

AT A GLANCE

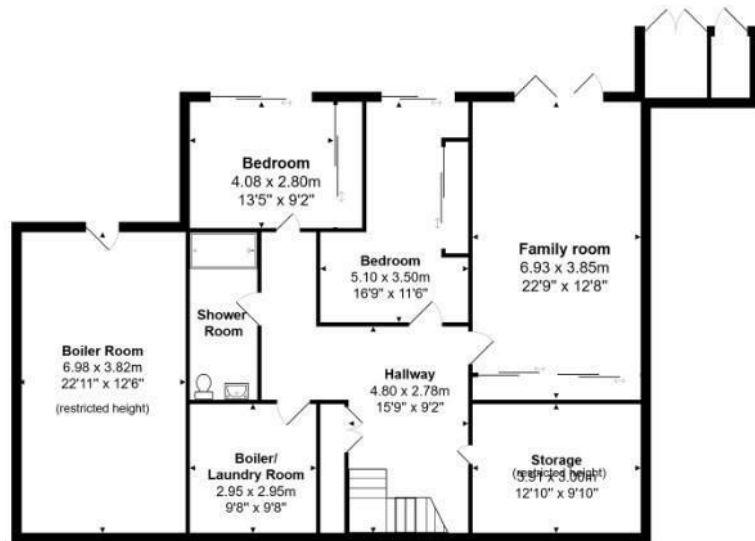
Guide price:	£1,350,000
Tenure:	Freehold
Stamp Duty:	£78,750 main home
Local Authority:	BCP Council
Council Tax:	£3,999.98 Band G

KEY FEATURES

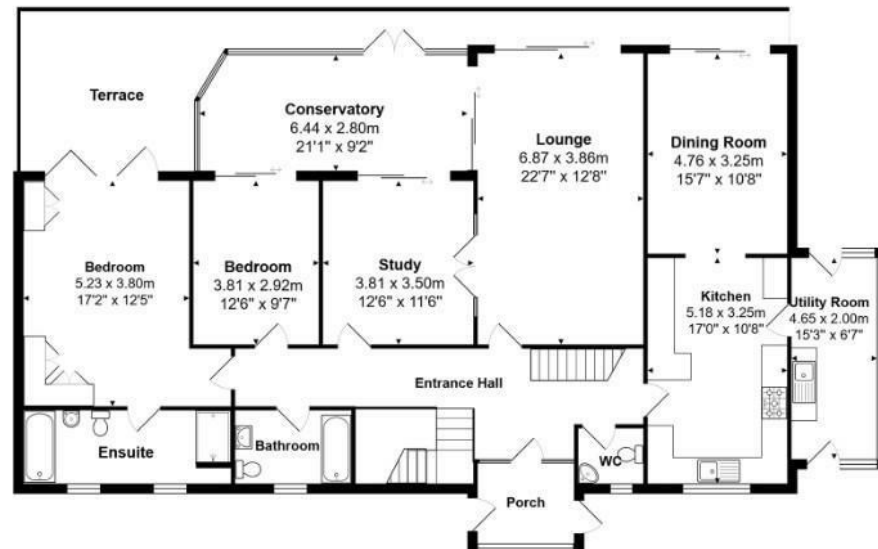
- Prestigious Canford Cliffs Village location
- Substantial detached home of over 4300 sq ft
- Set within a large private plot with landscaped gardens
- Flexible accommodation with 5–6 bedrooms and 4 modern bathrooms
- Three elegant reception rooms ideal for family living
- Heated outdoor swimming pool perfect for entertaining
- Double garage plus separate single garage providing ample parking and storage



First Floor



Lower Ground Floor



Ground Floor

Total Area: 402.0 m² ... 4327 ft²

All measurements are approximate and for display purposes only

LLOYDS

Important notice Lloyds Property Sales Ltd, its clients and any joint agents give notice that 1: They are not authorised to make or give any representations or warranties in relation to the property either here or elsewhere, either on their own behalf or on behalf of their client otherwise. They assume no responsibility for any statement that may be made in these particulars. These particulars do not form part of any offer or contract and must not be relied upon as statements or representations of fact. 2: Any areas, measurements or distances are approximate. The text, photographs, council tax charges, stamp duty charges and plans are for guidance only and are not necessarily comprehensive. It should not be assumed that the property has all necessary planning, building regulation or other consents and Lloyds Property Sales have not tested any services, equipment or facilities. Purchasers must satisfy themselves by inspection or otherwise.