



19 Croft Crescent, Markinch - KY7 6EH

Glenrothes

Offers Over £122,500





19 Croft Crescent

Markinch, Glenrothes

Spacious 3 bed upper flat in Markinch with large driveway, enclosed garden, DG, GCH (new boiler), EPC C, updated roof 2011, move-in ready, great commuting links. Home Report £125,000. Council Tax band: B

Tenure: Freehold

EPC Energy Efficiency Rating: C

EPC Environmental Impact Rating: C

- SPACIOUS UPPER MAIN DOOR FLAT
- THREE BEDROOMS TWO DOUBLE
- GENEROUS LOUNGE
- BREAKFASTING KITCHEN
- BATHROOM
- DG- GCH (NEW WORCESTER BOILER) - EPC C
- LARGE DRIVEWAY - ENCLOSED GARDEN
- HOME REPORT £125,000
- VIEW NOW!
- PERFECT STARTER HOME



home sweet home
estate agents
your local property experts

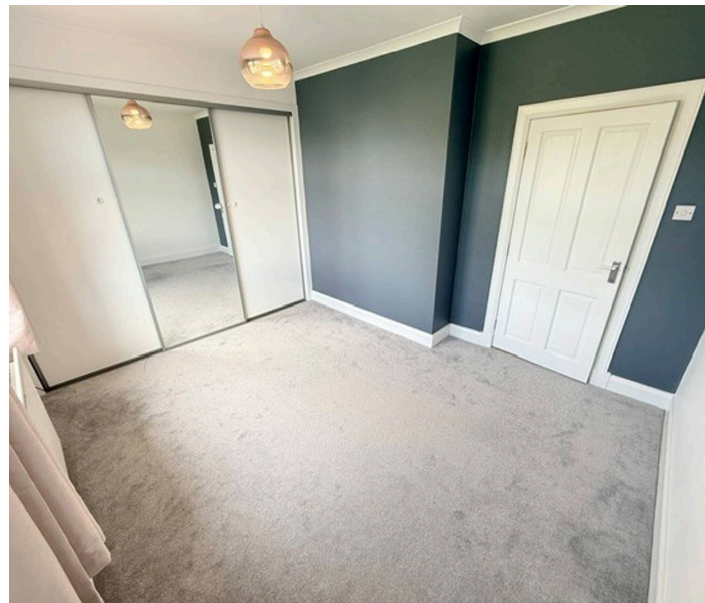
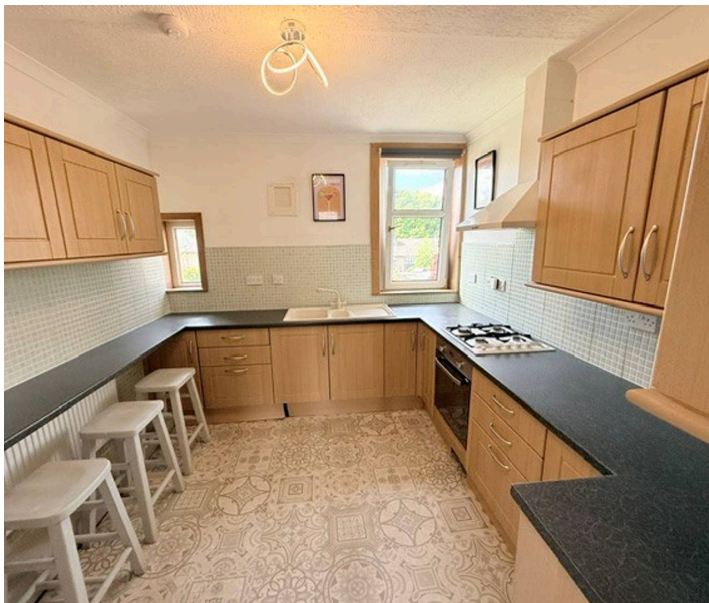


GARDEN

Enclosed garden

OFF STREET

6 Parking Spaces





Energy Efficiency Rating		Current	Potential
Very energy efficient - lower running costs			
(92+)	A		
(81-91)	B		
(69-80)	C	72	77
(55-68)	D		
(39-54)	E		
(21-38)	F		
(1-20)	G		
Not energy efficient - higher running costs			
England, Scotland & Wales		EU Directive 2002/91/EC	

Environmental Impact (CO ₂) Rating		Current	Potential
Very environmentally friendly - lower CO ₂ emissions			
(92+)	A		
(81-91)	B		
(69-80)	C	71	78
(55-68)	D		
(39-54)	E		
(21-38)	F		
(1-20)	G		
Not environmentally friendly - higher CO ₂ emissions			
England, Scotland & Wales		EU Directive 2002/91/EC	

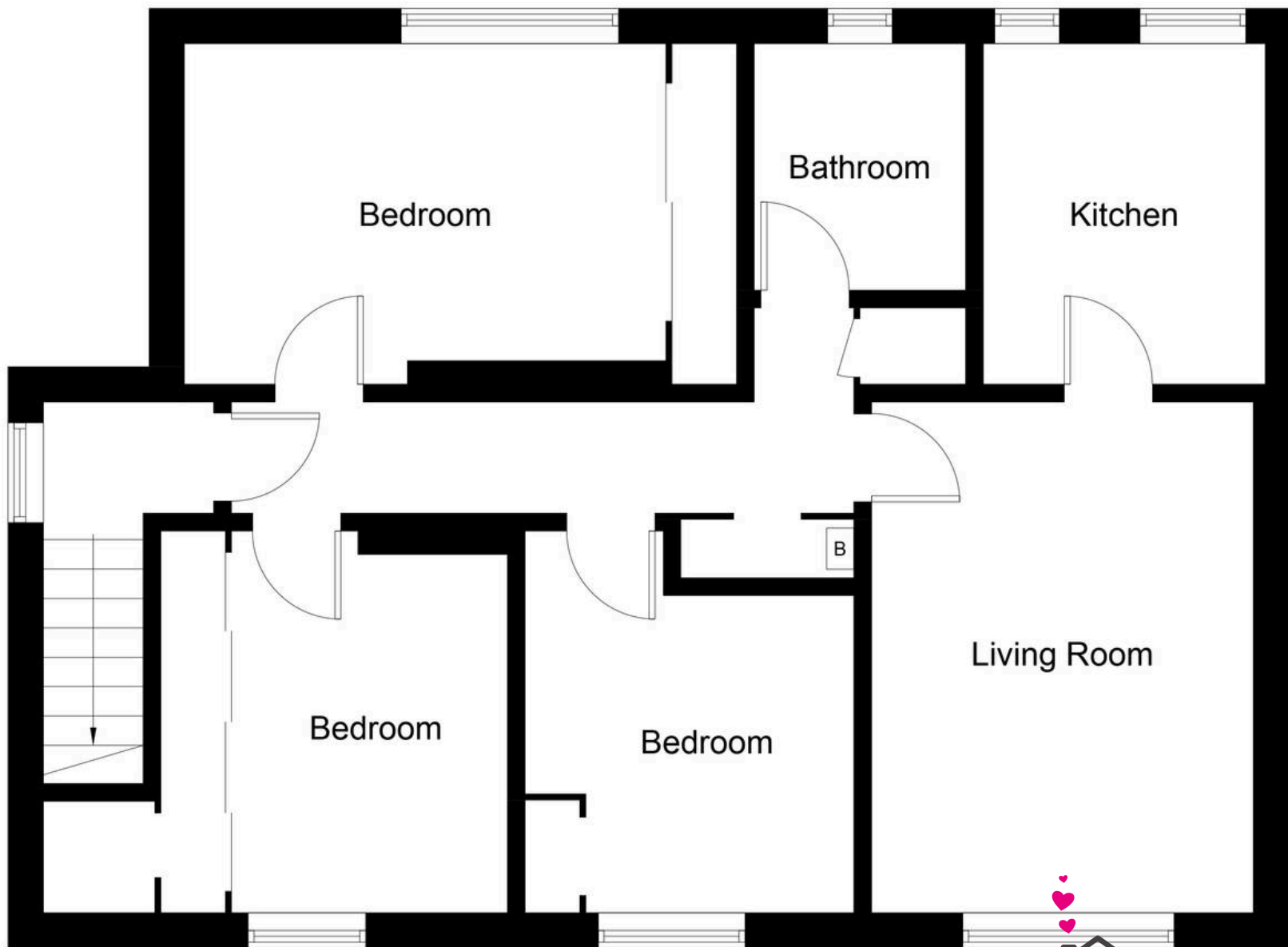


Illustration for identification purposes only, measurements are approximate, not to scale. Fourlabs.co © (ID1302773)



home sweet home
estate agents
your local property experts