

77 Charles Street

Epping

Council Tax band: TBD

Tenure: Freehold

- Three bedroom home
- Open plan living
- Driveway
- Ground floor WC
- End of terrace with side access
- Short walk to Epping station



Hammond
& Smith

Entrance

Lounge/ Diner

21' 4" x 11' 10" (6.50m x 3.60m)

Kitchen

13' 9" x 11' 2" (4.20m x 3.40m)

WC

Bedroom

12' 6" x 10' 10" (3.80m x 3.30m)

Bedroom

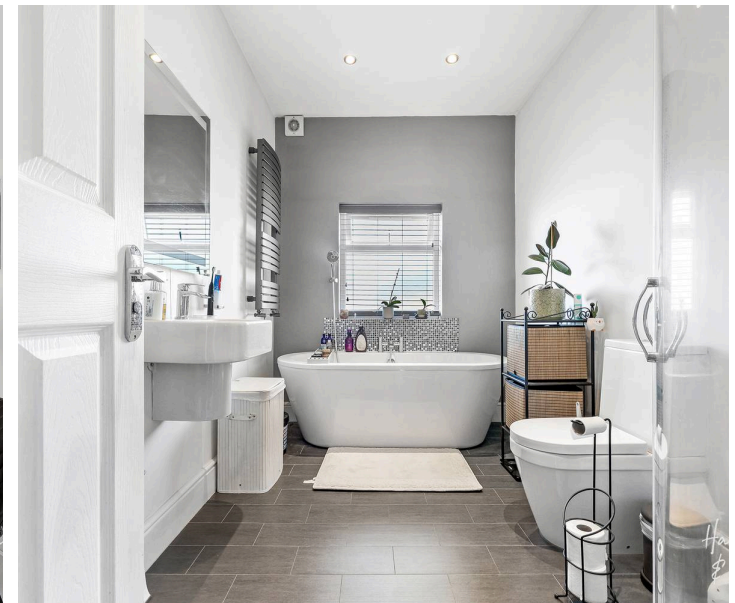
10' 2" x 8' 6" (3.10m x 2.60m)

Bathroom

10' 10" x 7' 3" (3.30m x 2.20m)

Bedroom

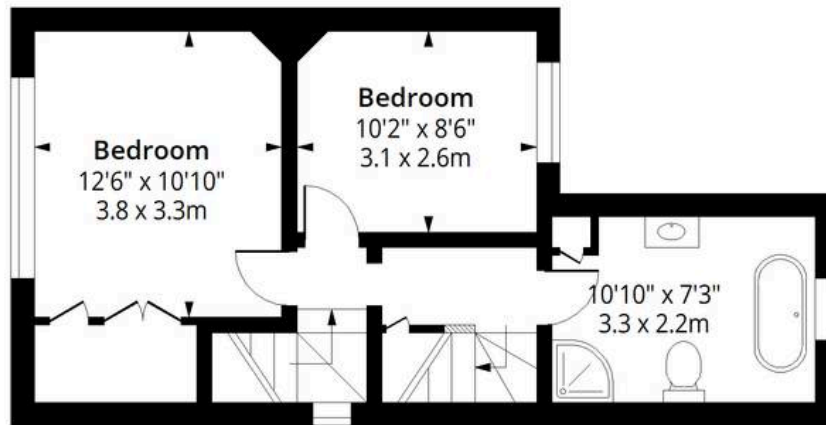
17' 9" x 14' 1" (5.40m x 4.30m)





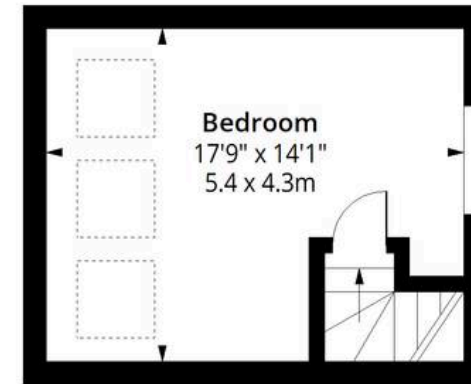
Charles Street CM16

Approx. Gross Internal Area 1189 Sq Ft - 110.46 Sq M



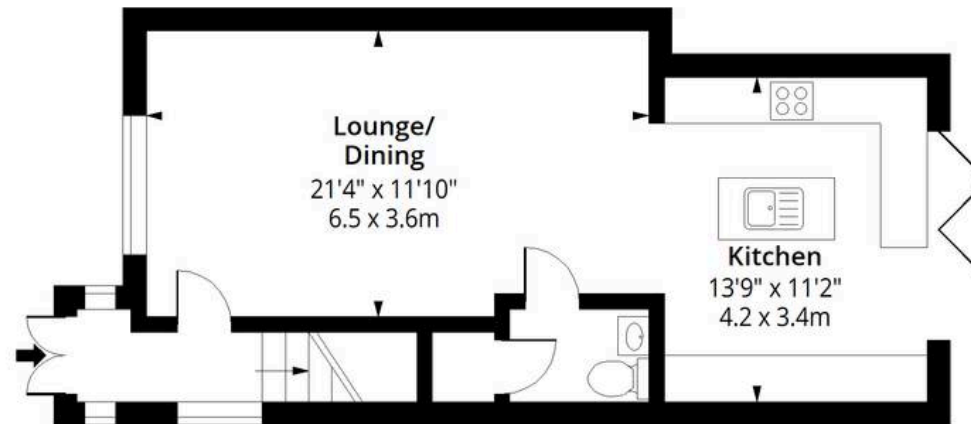
First Floor

Floor Area 429 Sq Ft - 39.85 Sq M



Second Floor

Floor Area 250 Sq Ft - 23.23 Sq M



Ground Floor

Floor Area 510 Sq Ft - 47.38 Sq M



Measured according to RICS IPMS2. Floor plan is for illustrative purposes only and is not to scale. Every attempt has been made to ensure the accuracy of the floor plan shown, however all measurements, fixtures, fittings and data shown are an approximate interpretation for illustrative purposes only. 1 sq m = 10.76 sq feet.

Date: 19/6/2026