



## Beechmore House, Battersea Roof Gardens, London SW11

£2,1000

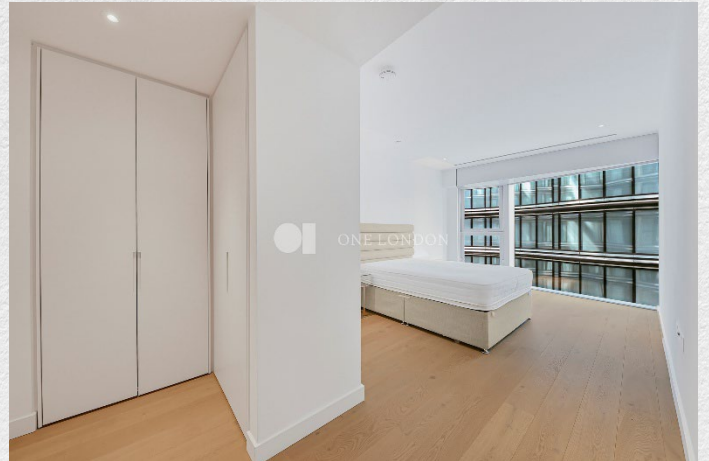
- Sixth floor apartment
- Three bedrooms
- Two bathrooms
- Designed by Foster + Partners
- Large kitchen/living area
- 1,292 sq ft (internal)
- 104 sq ft (winter garden)
- Comfort cooling
- Panoramic views from the roof top garden
- Premium residents' amenities
- Vibrant area
- Sought after location
- 24 hour concierge & security
- Excellent transport links

*Discover an unparalleled lifestyle in this architectural masterpiece by Foster + Partners.*

*Situated on the sixth floor, this exquisite three-bedroom residence spans a generous 1,292 sq. ft. of internal space, meticulously designed for both modern elegance and effortless daily functionality.*

*The height of sophistication manifests into natural light through the iconic undulating glass facade, a signature of the building's visionary design. Your private 104 sq. ft. winter balcony offers a serene sanctuary to enjoy panoramic views of the historic Battersea Power Station and the vibrant Electric Boulevard below. A Life of Luxury.*

*Beyond your front door, you'll enjoy exclusive access to an elite suite of amenities, including a state-of-the-art gym, an immersive private cinema, and a sophisticated residents' lounge and bar. These world-class facilities are complemented by one of London's largest rooftop gardens, providing stunning 360-degree skyline vistas. Perfectly positioned moments from Chelsea and elite transport links, this is your opportunity to be part of London's most iconic new heritage.*





ONE LONDON

PROPERTY

*Beechmore House,  
Battersea Power Station,  
SW11*

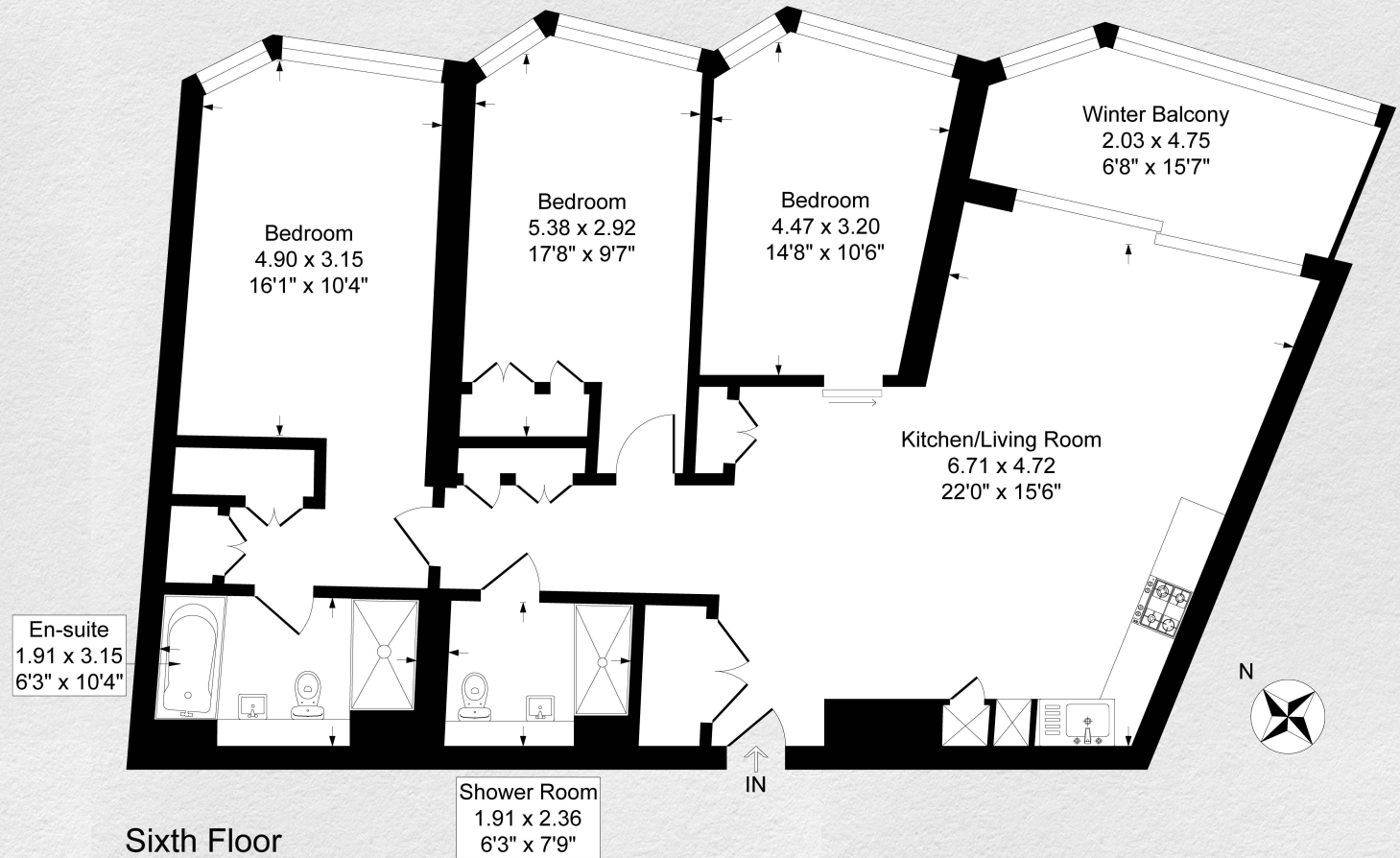
SIZE

*1,292 sq ft*

*Three bedrooms / Two bathrooms*

CONTACT

*0207 856 0396  
info@one-london.uk  
www.one-london.uk*



*\*\* For illustration purposes only. Could not be to scale.  
One-London aims to ensure accuracy but is not liable  
for any discrepancies.*

CB106R