



St Julians Farm Road, SE27 | £650,000

02087029999

newhomes@pedderproperty.com

pedder
NEW HOMES



In General

- Guide Price - £650,000 - £675,000
- 2-bedroom, 2-bathroom apartment
- Large Private Garden
- Newly Refurbished
- Open-plan Kitchen/ Living Area
- Large Patio
- Luxury En-suite Bathroom
- High Ceilings
- Cellar
- Close to West Norwood

In Detail

Guide Price £650,000 - £675,000. Newly refurbished 2-Bedroom, 2-bathroom apartment with a large private garden in the heart of West Norwood.

This beautifully renovated ground floor apartment offers a stylish and spacious living environment in the heart of West Norwood. Featuring two double bedrooms and two modern bathrooms, the property has been completely refurbished throughout to a high standard. The open-plan living and dining area flows seamlessly into a newly installed patio, which leads to a large private garden – a rare and valuable feature in London living.

The master bedroom benefits from an en-suite bathroom, while the second bedroom is served by a separate, equally well-appointed bathroom. The kitchen has been thoughtfully designed with contemporary fittings and integrated appliances, making it ideal for both everyday living and entertaining.

Located on the quiet and residential St Julians Farm Road, the property enjoys excellent access to local amenities. West Norwood is a vibrant and well-connected neighbourhood, known for its strong community feel, independent cafés, and cultural attractions such as the West Norwood Picturehouse and the monthly West Norwood Feast market.

Green spaces are plentiful, with Norwood Park and Tivoli Park both within easy reach, offering scenic walks, playgrounds, and panoramic views across London. Transport links are superb, with West Norwood Station just a short walk away, providing direct services to London Victoria and London Bridge. Tulse Hill Station is also nearby, offering Thameslink connections to central London and beyond.

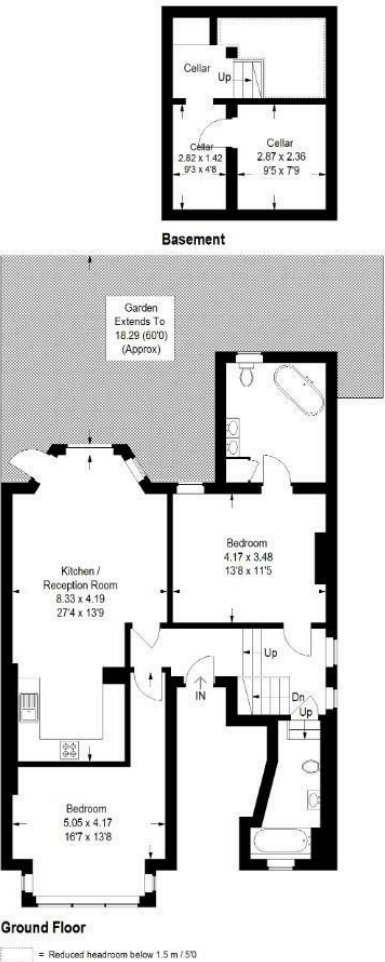
This turnkey apartment is perfect for first-time buyers, downsizers, or investors looking for a high-quality home in a sought-after location.



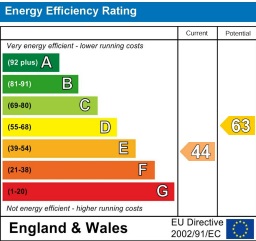
Floorplan

St Julians Farm Road, SE27

Approximate Gross Internal Area
108.3 sq m / 1166 sq ft



Copyright www.pedderproperty.com © 2025
These plans are for representation purposes only as defined by RICS - Code of Measuring Practice. Not drawn to Scale. Windows and door openings are approximate. Please check all dimensions, shapes and compass bearings before making any decisions reliant upon them.



Pedder Property Ltd trading as Pedder for themselves and for the vendor/landlord of this property whose agents they are, give notice that (1) these particulars do not constitute any part of an offer or contract, (2) all statements contained within these particulars are made without responsibility on the part of Pedder or the vendor/landlord, (3) whilst made in good faith, none of the statements contained within these particulars are to be relied upon as a statement of representation or fact, (4) any intending purchaser/tenant must satisfy him/herself by inspection or otherwise as to the correctness of each of the statements contained within these particulars, (5) the vendor/landlord does not make or give either Pedder or any person in their employment any authority to make or give representation or warranty whatsoever in relation to this property.