



Eamont Street, NW8

£585,000

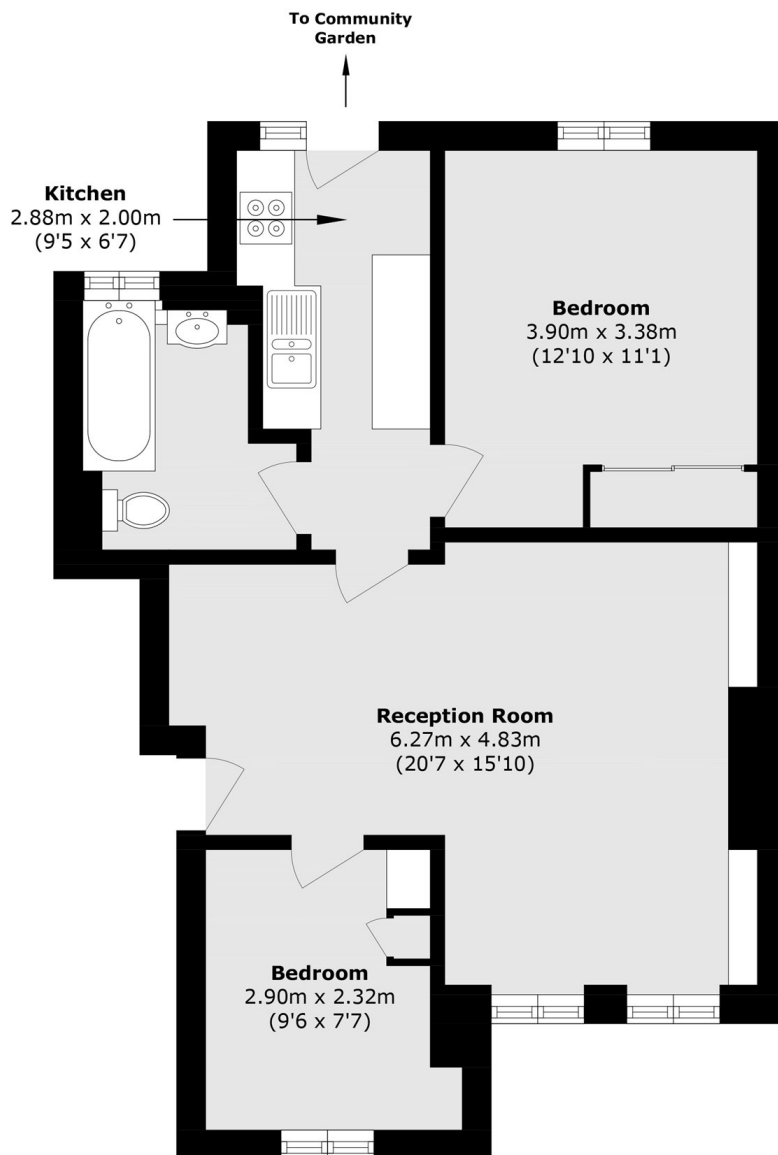
A bright two bedroom apartment offered chain free, featuring a spacious reception room and a separate kitchen. The property benefits from access to well-kept communal gardens and includes its own external storage room.

Eamont Court sits moments from the boutiques, cafés, and amenities of St John's Wood High Street, with Regent's Park also close by. The area offers a peaceful residential setting with excellent lifestyle appeal. Strong transport links include St John's Wood Underground Station (Jubilee line).

Features

- Two Bedrooms
- Communal Gardens
- By Regents Park
- Chain Free
- External Storage Room
- Separate Kitchen

Eamont Street, London, NW8



Total area (approx.): 56.9 sq. m (612.4 sq. ft)