



COUNTRY
HOLMES

21 Copper Beech Drive,
£285,000

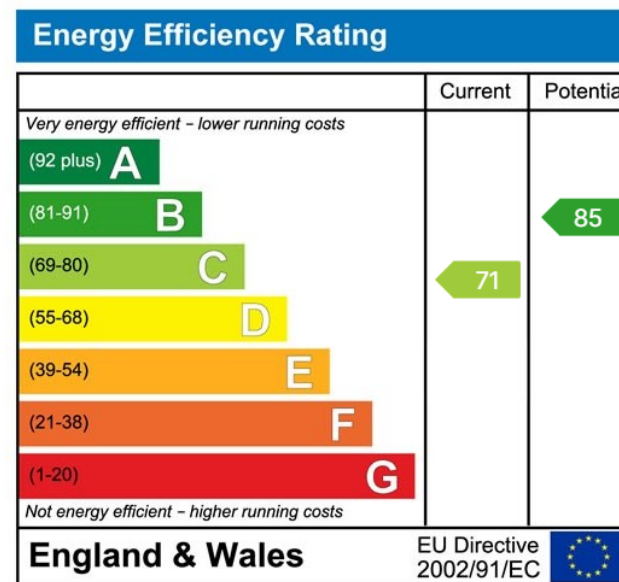
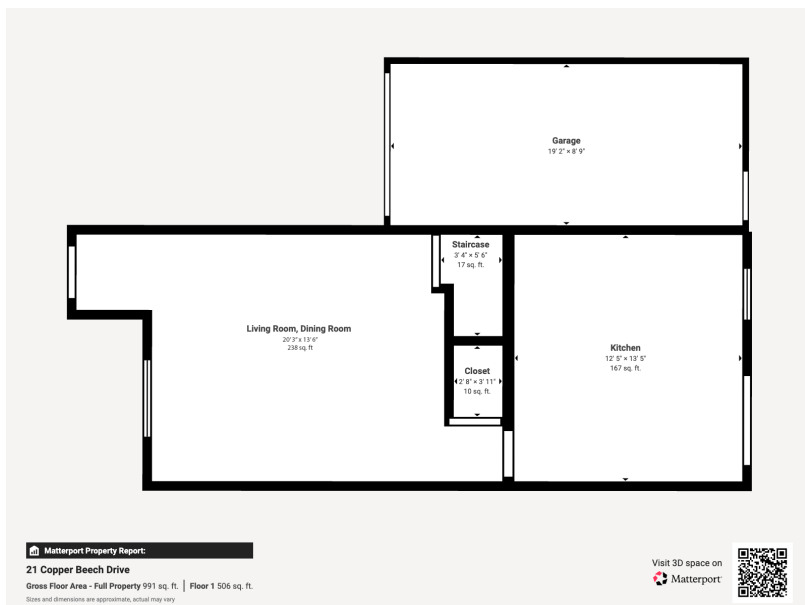
🛏 3 🚿 1 🚗 1



- Three-bedroom end mews property
- Quiet cul-de-sac location
- Small and popular development
- No onward chain
- Well-presented kitchen diner with patio doors to rear garden
- Three well-proportioned bedrooms
- Driveway and integral garage
- Enclosed rear garden with raised seating area
- Ideal for first-time buyers and families
- Approved planning permission for a two-storey side extension



An attractive three-bedroom end mews property situated in a quiet cul-de-sac location on a popular small development. Offered for sale with no onward chain, the property features a spacious lounge, modern kitchen diner with patio doors to the rear garden, three well-proportioned bedrooms, family bathroom, driveway, and integral garage. Ideal for families and first-time buyers alike - early viewing is highly recommended.



01457 761310 | glossop@countryholmes.co.uk | www.countryholmes.co.uk
 18 High Street West, Glossop, Derbyshire, SK13 8BH