

CHESTERTONS





Ham Yard Residences

Soho, W1D 7AH

“ *A chic two bedroom duplex residence at the Ham Yard Hotel with floor to ceiling windows, a large terrace, beautiful oak floors and access to incredible hotel amenities including 24 hour concierge and room service, gym, spa and roof garden.* ”

Long let: £17,528 per week / £75,954.67 per month

2



2



1,560
sqft





Property Description

A chic two-bedroom duplex residence individually designed by Firmdale Hotels' Creative Director and Founder Kit Kemp. Located in the heart of Soho, the space benefits from floor-to-ceiling windows, a large terrace, and access to luxury hotel amenities, including 24-hour concierge and room service, a gym, spa, and bowling alley.

This residence is a two-bedroom apartment, split over the fifth and sixth floors. Showcasing the signature style of Kit Kemp, design blends classic and contemporary inspiration, the space offers the best of chic city living. It features a large private terrace with views across the rooftops of Soho, an open-plan living and dining room space, a sleek Boffi kitchen and comfortable king size bedrooms with en suite bathrooms.

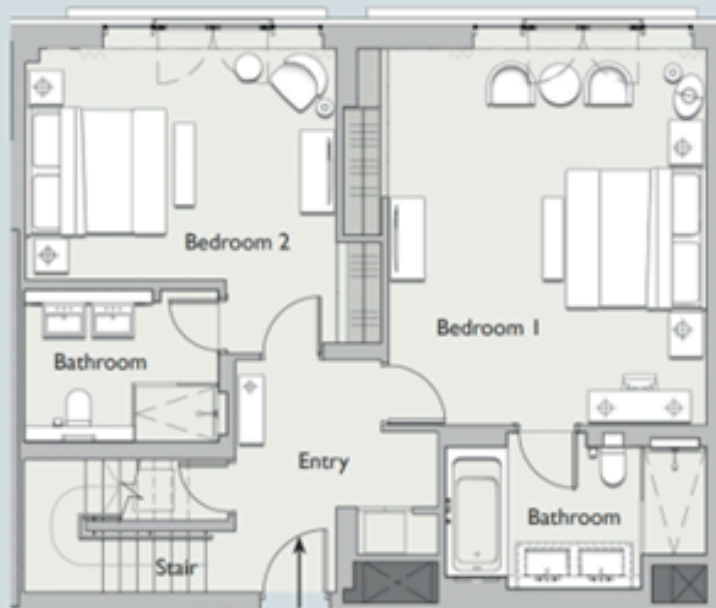
Warehouse-style windows flood the space with natural light. The bathrooms are designed in marble and oak and feature deep bath tubs and walk-in showers and there's also a powder room, ideal for guests.

Residents benefit from all of the hotel amenities which include 24-hour concierge, room service and daily housekeeping service, as well as facilities including a restaurant & bar, spa, gym, private event spaces, lounges, roof terrace, outside courtyard and a bowling alley. The residence can be accessed via the main hotel entrance or from a dedicated private entrance for the residences.









FLOORPLAN LOWER



FLOORPLAN UPPER