



LISSON GROVE, NW1

£500,000

One double bedroom
Lift
Share of freehold
Private gym and pool
Parking
24 hour porter

@marshandparsons
marshandparsons.co.uk

MARSH &
PARSONS



ABOUT THE PROPERTY

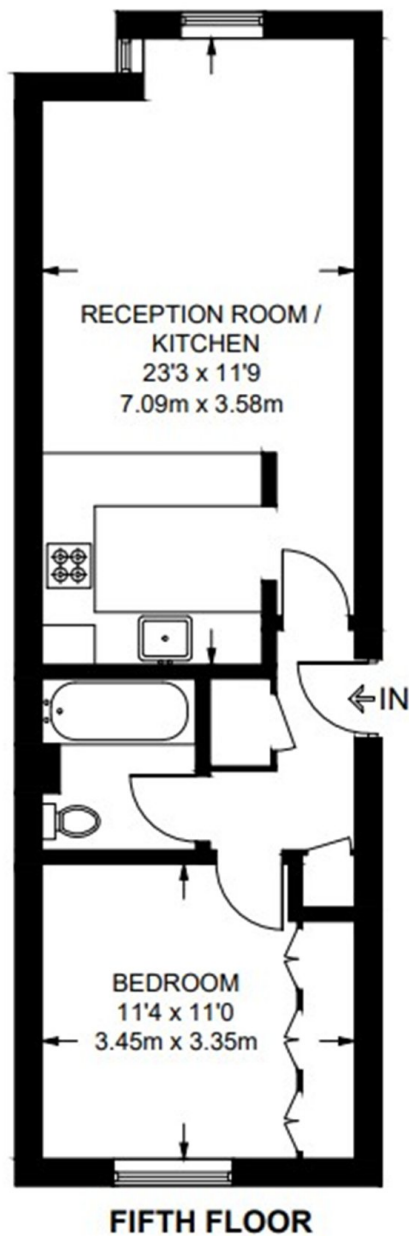
A beautifully presented one bedroom property located on this sought after development in Marylebone. The property is on the fifth floor of this purpose built building (with lift) and boasts a spacious open plan kitchen living room with ample natural light, a well proportioned bathroom and good sized double bedroom with ample storage. The property further benefits from 24 hour porter, private gym and swimming pool and parking.

Portman Gate is a desirable and sought-after secure development, located on the corner of Lisson Grove and Broadley Terrace. Residents benefit from excellent portorage services, a modernised gym, sauna facilities and a wonderful swimming pool.



STEP INSIDE LISSON GROVE

APPROXIMATE FLOOR AREA = 481 SQ FT / 44.7 SQ M
INCLUDING LIMITED USE AREA (3 SQ FT / 0.3 SQ M)



Marylebone & Mayfair
020 7935 1775

Energy Rating: C We aim to make our particulars both accurate and reliable. However, they are not guaranteed; nor do they form part of an offer or contract. If you require clarification on any points then please contact us, especially if you're traveling some distance to view. Please note that appliances and heating systems have not been tested and therefore no warranties can be given as to their good working order

MARSH &
PARSONS