

LANES



13 Jubilee Terrace, Milton Keynes, MK11 1DU

A charming Victorian mid-terrace cottage located in the heart of Stony Stratford, just a short walk from the High Street, shops, cafés and pubs.

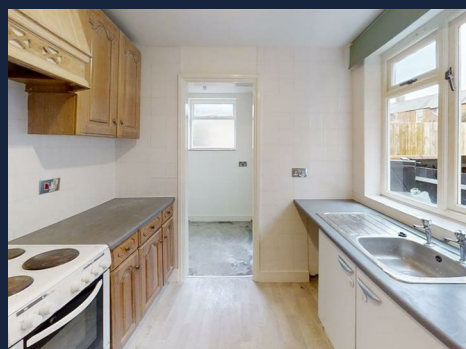
The property offers three bedrooms (two doubles and a single/home office), two reception rooms, a fitted kitchen and a family bathroom & sperate ground floor cloakroom. To the rear is a private, low-maintenance garden, with on-street parking available to the front.

Ideally suited to professional tenants or a small family, the home combines period character with practical living space and excellent access to Milton Keynes Central, the A5 and M1.

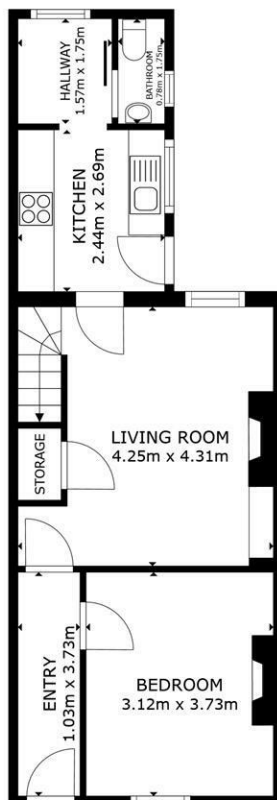
Availbe Now to Rent. Council tax band C

£1,395 Per Month

13 Jubilee Terrace, Milton Keynes, MK11 1DU







FLOOR 1

GROSS INTERNAL AREA
FLOOR 1 46.4 m² FLOOR 2 47.3 m²
TOTAL : 93.6 m²

SIZES AND DIMENSIONS ARE APPROXIMATE, ACTUAL MAY VARY.

