



Hamond Court Queenshurst Square, Kingston Upon Thames, KT2 5FY

£735,000

# Hamond Court Queenshurst Square, Kingston Upon Thames, KT2 5FY

Occupying the eighth and top floor of the prestigious Queenshurst Square development by Berkeley Homes, this exceptional two-bedroom apartment offers approximately 774 sq ft of stylish contemporary accommodation with impressive far-reaching views across Kingston upon Thames.

Finished to a high specification throughout, the apartment features a bright and spacious double-aspect open-plan living area, creating a superb space for both relaxing and entertaining. Large windows allow natural light to flood the interior, while doors open onto a private balcony, providing the perfect spot to enjoy the elevated outlook.

The contemporary kitchen is beautifully appointed with sleek cabinetry, integrated appliances and a breakfast bar, combining practicality with modern design. The generous principal bedroom benefits from fitted wardrobes, a dedicated dressing area and a luxurious en-suite shower room. A second well-proportioned double bedroom is served by an equally impressive family bathroom, making the property ideal for professionals, couples, downsizers or those requiring guest accommodation.

Further benefits include secure underground parking for one vehicle, lift access and access to an outstanding range of residents' amenities. Queenshurst Square offers a 24-hour concierge service, landscaped communal gardens, an exclusive health suite, screening room and media room, providing a lifestyle rarely available in such a central location.

Ideally situated in the heart of Kingston upon Thames, the development is just moments from the town centre's extensive shopping, dining and leisure facilities. Kingston mainline station offers excellent transport links into Central London, while the River Thames and its picturesque riverside walks, cafés and restaurants are only a short stroll away.

## AI Image Disclaimer

Some images may have been digitally enhanced and/or virtually altered using artificial intelligence (AI) for illustrative purposes.



# Floor Plan

Approximate Gross Internal Area  
74.40 sq m / 800 sq ft

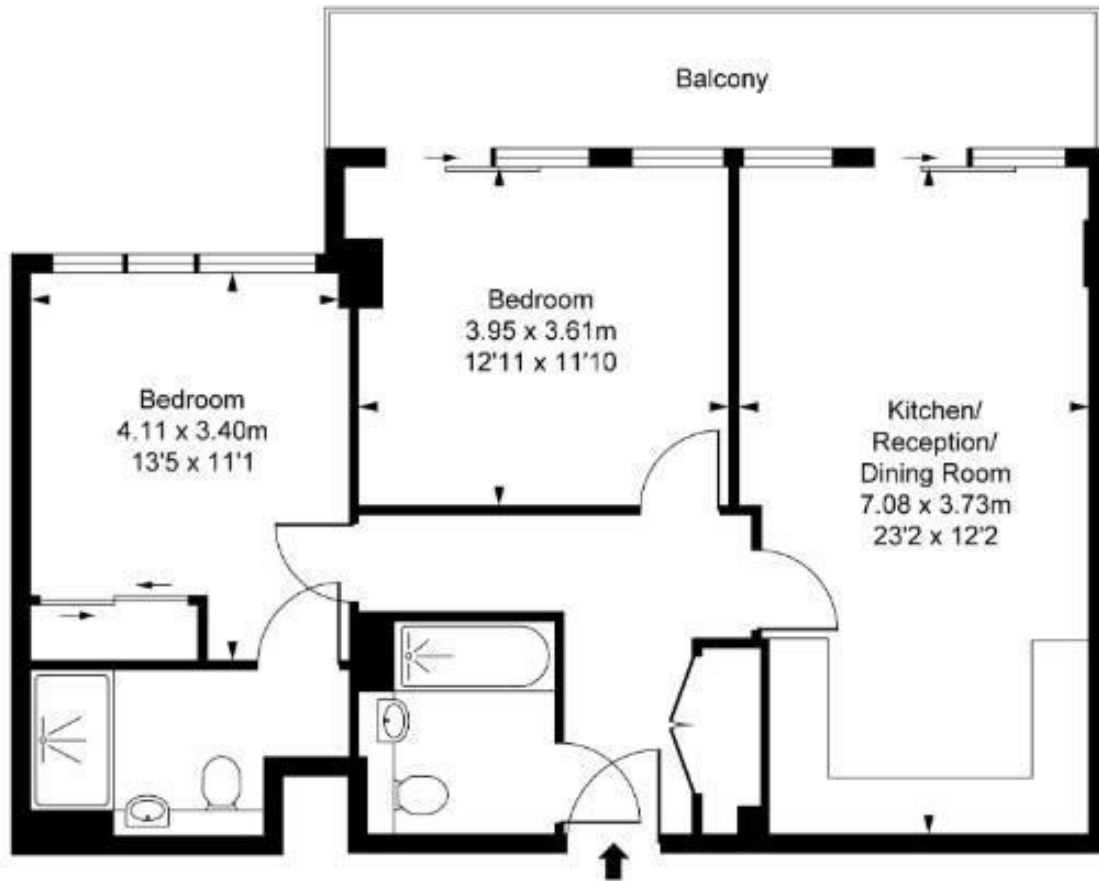


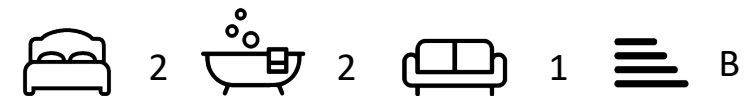
ILLUSTRATION FOR IDENTIFICATION PURPOSES ONLY  
ALL MEASUREMENTS AND AREA FIGURES SUPPLIED BY OTHERS, ACCURACY IS NOT GUARANTEED.



## Features

- Top Floor Luxury
- Private Balcony
- Underground Parking
- Berkeley Homes Build
- Far-Reaching Views
- Concierge Service
- Exclusive Facilities
- Concierge Gym & Media room

10 St Judes Road, Englefield Green, Surrey TW20 0BY  
Tel 01784 433696  
sales@aspenestateagents.co.uk



Tenure - Leasehold Council Tax Band - E

