



Townshend Terrace, TW9

£495,000

Set within a well-maintained purpose-built development, this bright and spacious first-floor apartment offers over 800 sq ft of versatile living space, ideal for first-time buyers, young families, or those seeking a convenient London base.

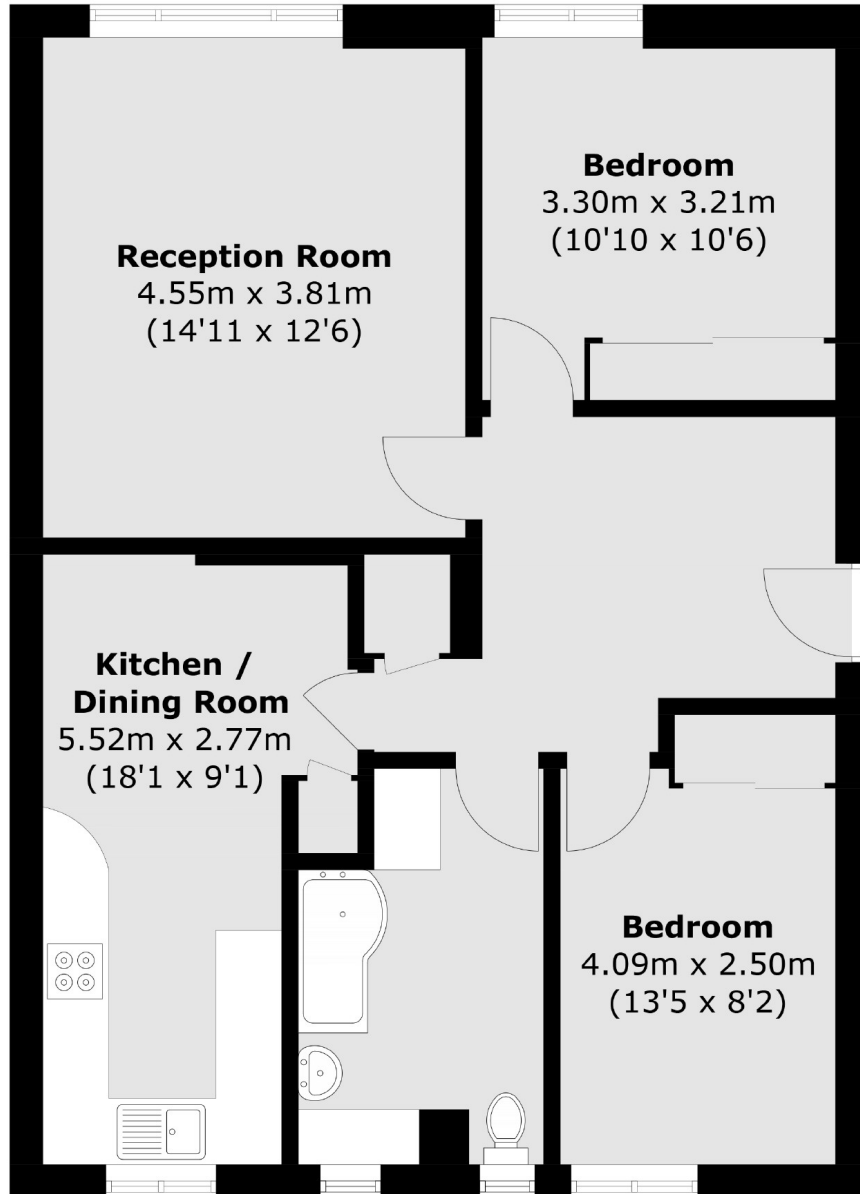
The property features two generous double bedrooms, a large reception room, and a separate kitchen/breakfast room measuring over 18 feet, perfect for entertaining or everyday living. The layout also offers flexibility, with potential to reconfigure into a three-bedroom arrangement if desired. A modern bathroom adds further appeal, while residents also benefit from access to communal gardens and a private storage shed.

Positioned on a peaceful residential street, the apartment is just a short walk from North Sheen Station (Zone 3), offering swift links into London Waterloo. Richmond Station and town centre are also within easy reach (approx. 0.8 miles), offering a wide range of shops, cafes, restaurants, and District Line services.

- First Floor • Two Double Bedrooms • Spacious kitchen/breakfast room •
- Communal Gardens • Long Lease • Modern Finish •

SNELLERS

ESTATE AGENTS



Total area (approx.): 73.9 sq. m (795.4 sq. ft)

Snellers St. Margarets Sales
36 Crown Road
St Margarets
TW1 3EH
020 8892 8008
stmargaretssales@snellers.co.uk

Energy Rating: We aim to make our particulars both accurate and reliable. However they are not guaranteed; nor do they form part of an offer or contract. If you require clarification on any points then please contact us, especially if you're traveling some distance to view. Please note that appliances and heating systems have not been tested and therefore no warranties can be given as to their good working order