



Frampton Road, offers over £230,000

- Off Road Parking
- Close to Schools
- Freehold
- 4 Bedrooms
- Good Sized Garden
- Close Links To M4
- Solar Panels
- Ideal Family Home
- EPC Rating: B



 4  2  2



About the property

Welcome to this charming four-bedroom property on Frampton Road, offering generous living space and an exceptional location ideal for families and commuters alike.

As you enter, you're greeted by a bright and airy open-plan reception area, perfect for both relaxing and entertaining. The layout flows seamlessly into a good-sized kitchen, complemented by a practical utility room on the ground floor, providing excellent storage and functionality.

Upstairs, the home offers four bedrooms, making it ideal for growing families or those needing extra space for a home office. A modern family bathroom and separate shower room serves the first floor.

One of the standout features of this property is the large rear garden. This expansive outdoor space is a true highlight—ideal for children, pets, gardening enthusiasts, or those who enjoy outdoor dining and entertaining.

Situated in a central and convenient location, the property is close to excellent transport links including the M4, as well as well-regarded schools and a range of local amenities.

Fitted with solar panels, this property offers lower running costs, improved energy efficiency, and long-term savings.



Accommodation

Kitchen

16' 6" max x 16' 2" max (5.03m max x 4.93m max)

Utility Room

W.C

Lounge 1

12' 7" x 12' (3.84m x 3.66m)

Lounge 2

12' 3" x 10' (3.73m x 3.05m)

Bedroom 1

15' 6" x 10' 3" (4.72m x 3.12m)

Ensuite

Bedroom 2

13' 4" x 10' 2" (4.06m x 3.10m)

Bedroom 3

10' 1" x 9' 1" max (3.07m x 2.77m max)

Bedroom 4

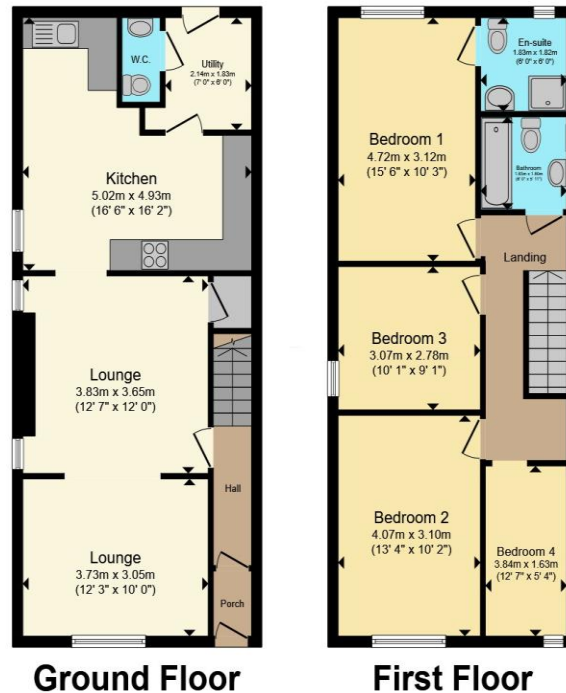
12' 7" x 5' 4" (3.84m x 1.63m)

Bathroom

01792 894422

gorseinon@peteralan.co.uk

Floorplan



Ground Floor

First Floor

Total floor area 114.1 m² (1,228 sq.ft.) approx

This floor plan is for illustrative purposes only. It is not drawn to scale. Any measurements, floor areas (including any total floor area), openings and orientation are approximate. No details are guaranteed, they cannot be relied upon for any purpose and they do not form part of any agreement. No liability is taken for any error, omission or misstatement. A party must rely upon its own inspection(s). Powered by www.propertybox.io



Important Information

Note while we endeavour to make our sales details accurate and reliable, if there is any point which is of particular interest to you, please contact the office and we will be pleased to confirm the position for you. We have not personally tested any apparatus, equipment, fixtures, fittings or services and cannot verify they are in working order or fit for their purposes. Nothing in these particulars is intended to indicate that carpets or curtains, furnishings or fittings, electrical goods (whether wired or not). Gas fires or light fittings or any other fixtures not expressly included form part of the property offered for sale. This computer generated Floorplan, if applicable, is intended as a general guide to the layout and design of the property. It is not to scale and should not be relied upon for dimensions. Tenure: We cannot confirm the tenure of the property as we have not had access to the legal documents. The buyer is advised to obtain verification from their solicitor or surveyor.

Peter Alan Limited is registered in England and Wales under company number 2073153, Registered Office is Cumbria House, 16-20 Hockliffe Street, Leighton Buzzard, Bedfordshire, LU7 1GN. VAT Registration Number is 500 2481 05. For activities relating to regulated mortgages and non-investment insurance contracts, Peter Alan Limited is an appointed representative of Connells Limited which is authorised and regulated by the Financial Conduct Authority. Connells Limited's Financial Services Register number is 302221. Most buy-to-let

