



**Offers In
Excess Of
£350,000
Freehold**

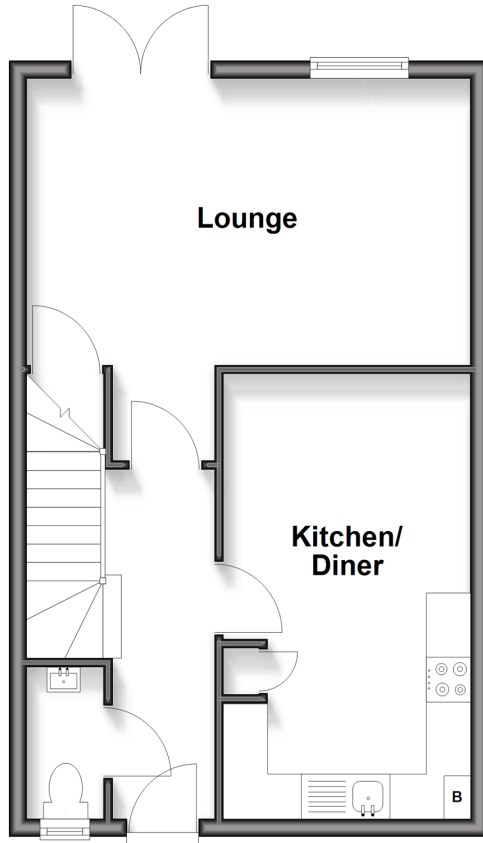
3x  2x  1x 

**Gobey Drive,
Fishbourne, Chichester,
West Sussex, PO19**

cubitt & west
Helping you move forwards

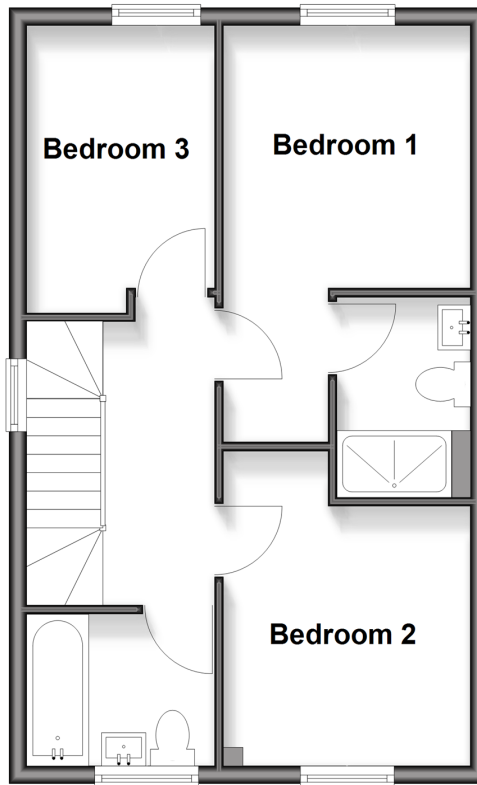
Ground Floor

Approx. 40.8 sq. metres (438.7 sq. feet)



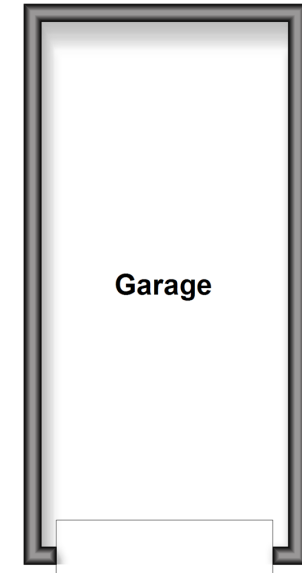
First Floor

Approx. 41.3 sq. metres (444.4 sq. feet)



Outbuilding

Approx. 16.3 sq. metres (175.5 sq. feet)



Accommodation

GROUND FLOOR

Entrance Hall

Cloakroom

Lounge: 16'2 x 10'5 (4.93m x 3.18m)

Kitchen / Diner: 15'6 x 9'10 (4.73m x 3.00m)

FIRST FLOOR

Bedroom 1: 12'1 x 9'0 (3.69m x 2.75m)

En Suite

Bedroom 2: 11'4 x 9'4 (3.46m x 2.85m)

Bedroom 3 / Study: 9'1 x 7'0 (2.77m x 2.14m)

Bathroom

OUTSIDE

Front and Rear Garden

Garage: 19'7 x 9'8 (5.97m x 2.95m)



Main features

- Bright, open-plan kitchen and dining area
- Spacious lounge with french doors into rear garden
- Private rear garden with paved patio, perfect for al fresco dining
- Three well-proportioned bedrooms including en suite to main bedroom
- Garage and driveway parking
- Energy efficient, modern build



Nearest Schools

Primary Schools: Jessie Younghusband Primary 0.4 miles, Parklands Community Primary 0.5 miles, Central CofE Junior School 0.6 miles

Secondary Schools: St Anthony's School 0.4 miles, Bishop



Transport Information

Train Stations: Chichester 1.1 miles, Fishbourne 1.1 miles, Bosham 2.4 miles



Address

Gobey Drive, Fishbourne, Chichester, West Sussex, PO19



Directions

For directions to this property please contact us.



cubitt&west
Helping you move forwards

Call Chichester Branch 01243 786581 ■ cubittandwest.co.uk



■ Legal advice should be taken to verify fixtures/fittings, planning, alterations and/or lease details ■ Appliances & services are untested, dimensions are approximate and floor plans are not to scale

40415480/20250929/TJ/HS