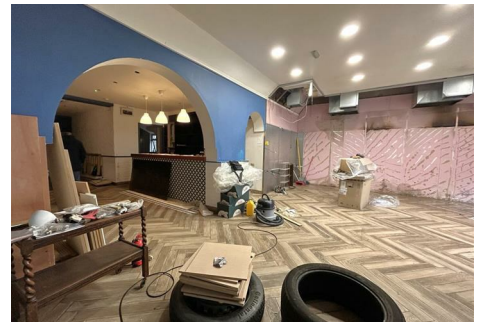


est 1979

Jeremy
Leaf & Co.



Station Road, Finchley, London, N3

£35,000 Per Annum

- Prominent location on Station Road, just off Regents Park Road
- Class E usage
- Directly opposite Finchley Central Northern Line Tube Station
- Suitable for a variety of uses

863 High Road, London, N12 8PT
020 8446 4295

land@jeremyleaf.co.uk
<https://www.jeremyleaf.co.uk/>

Station Road, Finchley, London, N3 2SB

A double fronted ground floor commercial unit of approx. 108.3 sq. m. / 1165 sq. ft. to rent in a prominent position in the heart of Finchley Central.

The premises has Class E usage (formerly A3) and was previously used as a restaurant but has the potential for many other uses.

Conveniently located just off Regents Park Road close to the junction with Ballards Lane and just 50 yards from Finchley Central Northern Line Tube Station, sitting directly opposite the pedestrian walkway leading to the platforms.

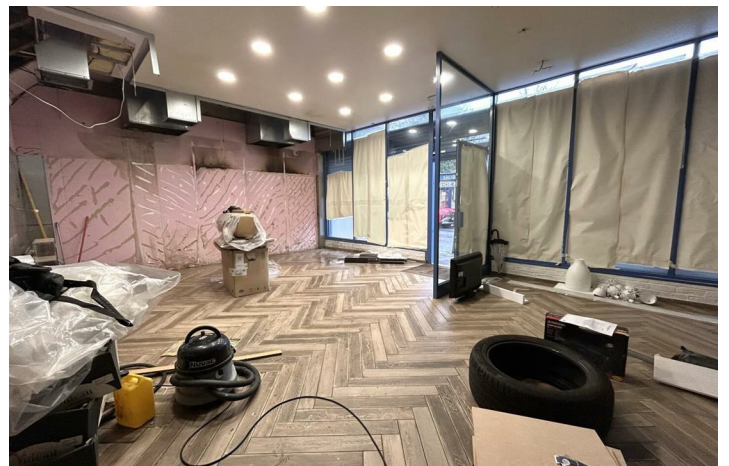
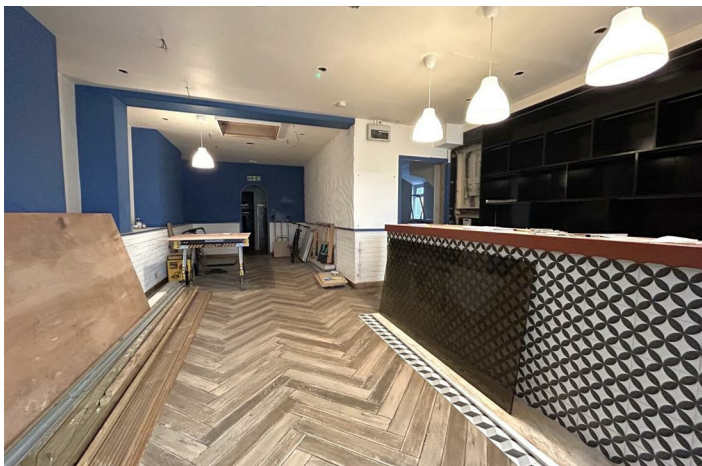
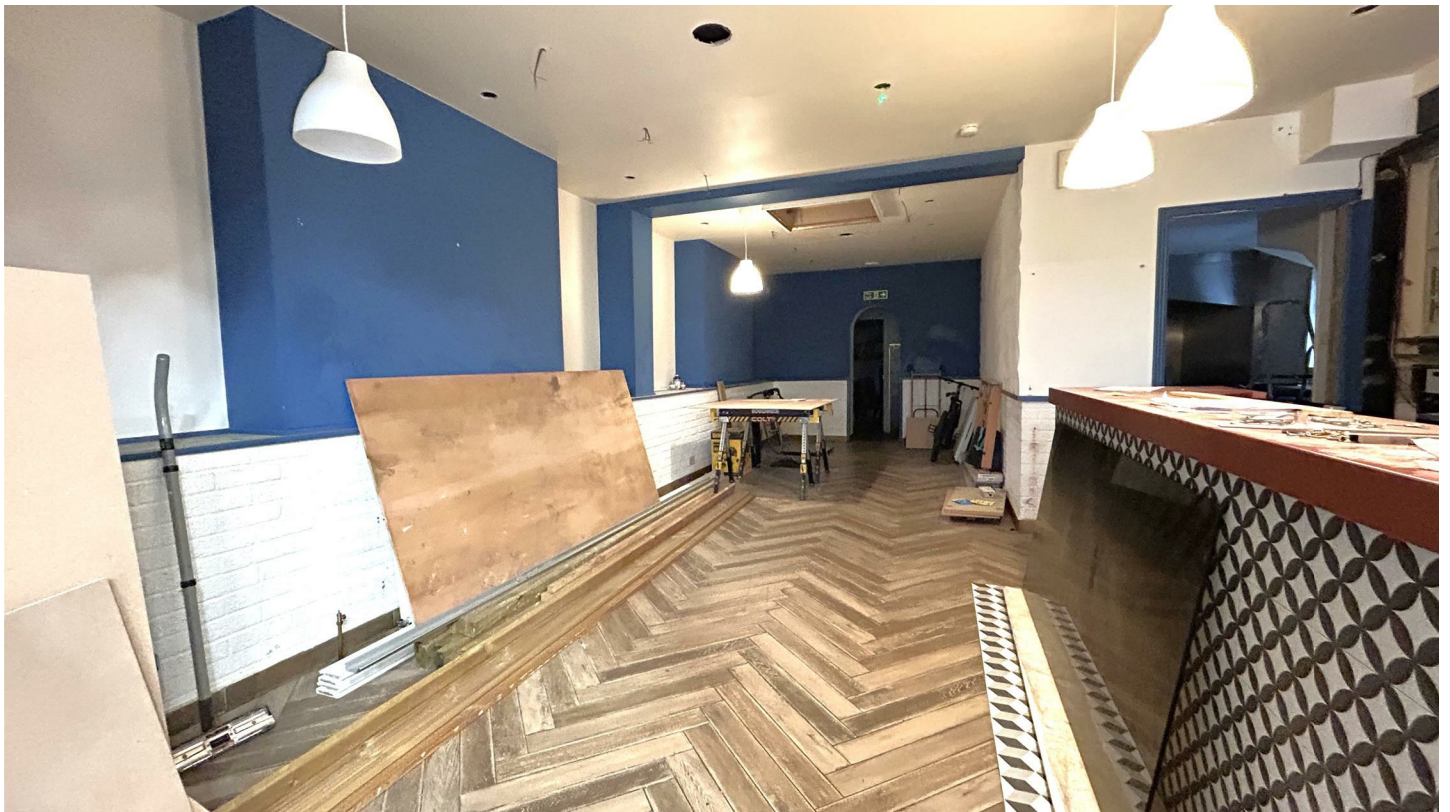
The area is very well connected, with numerous bus routes just over 100 yards away providing links throughout Barnet and the wider North London region. Excellent road access via the North Circular (A406) and the A1.

Terms are as follows:

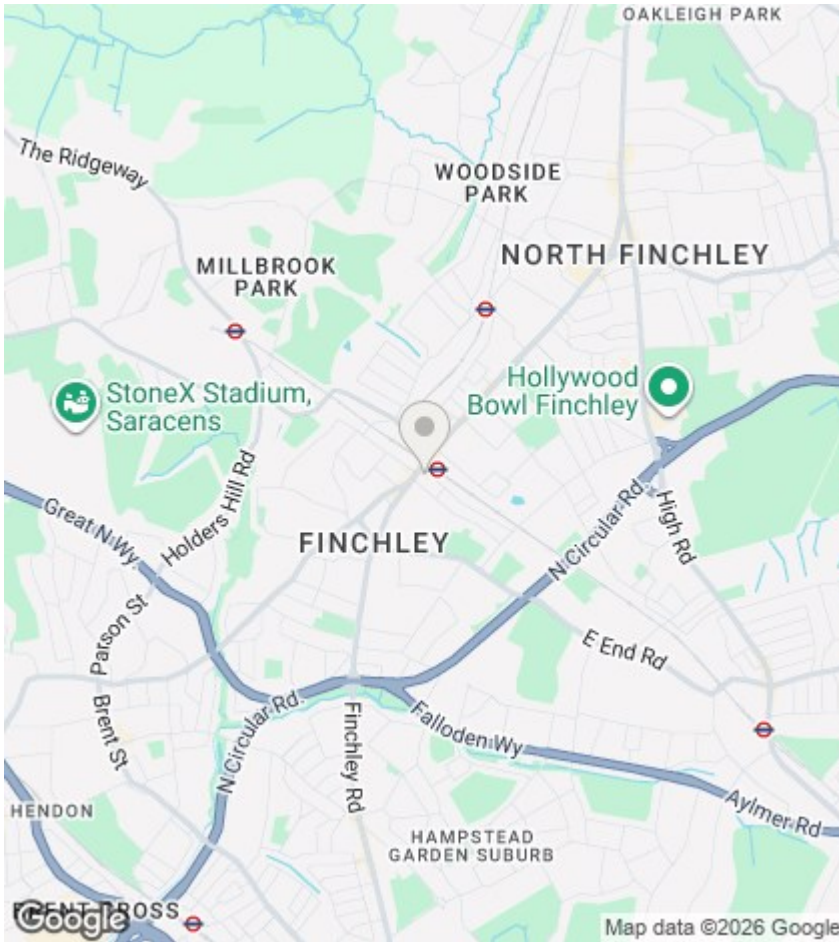
- Rent: £35,000 per annum



Council Tax Band:







Directions

Viewings

Viewings by arrangement only. Call 020 8446 4295 to make an appointment.

EPC Rating:

Energy Efficiency Rating		Current	Potential
Very energy efficient - lower running costs			
(92 plus) A			
(81-91) B			
(69-80) C			
(55-68) D			
(39-54) E			
(21-38) F			
(1-20) G			
Not energy efficient - higher running costs			
England & Wales		EU Directive 2002/91/EC	

