



# Bungalow 21, , Landscope Holiday Park , Gillard Road , Brixham, Devon, TQ5 9EP

£135,000

🛏️ 2 🚿 1 🚗 1



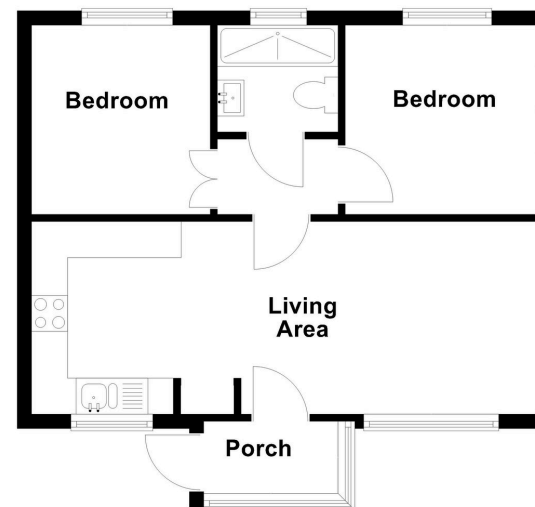
- TRADITIONALLY BUILT HOLIDAY BUNGALOW
- SET IN A PEACEFUL SPOT
- ADJACENT TO BERRY HEAD COUNTRY PARK
- EXCEPTIONALLY WELL PRESENTED
- LIVING ROOM
- STYLISH KITCHEN
- 2 BEDROOMS
- WELL APPOINTED SHOWER ROOM
- D/GLAZING & ELECTRIC HEATING
- INCOME POTENTIAL



Immaculately presented, fully modernised 2-bedroom holiday bungalow offering 50 weeks residency, set at the end of a small, well-managed development of just 38 units. This traditional build enjoys a prime, peaceful position with views over Berry Head Country Park. The property boasts bright, stylish interiors throughout, complemented by sun-trap outdoor spaces—perfect for relaxing or entertaining. With allocated parking and direct access to breathtaking coastal walks, this is an ideal retreat for nature lovers. Adjacent to 100 acres of protected parkland, rich in wildlife, wildflowers, and historic charm, including a Napoleonic fort, this exceptional bungalow offers a rare opportunity to enjoy tranquil coastal living in a truly spectacular setting. It has income potential or just use it as your own little get away from it all retreat.



The Bungalow 21 Landscope Holiday Village



**OFFICE**  
49 Hyde Road, Paignton,  
Devon, TQ4 5BP  
01803 521111 | info@propertyladderdevon.com  
propertyladderdevon.com

Agents Note: Whilst every care has been taken to prepare these particulars, they are for guidance purposes only. All measurements are approximate and are for general guidance purposes only and whilst every care has been taken to ensure their accuracy, they should not be relied upon and potential buyers/tenants are advised to recheck the measurements