



Bunhill Row, EC1Y

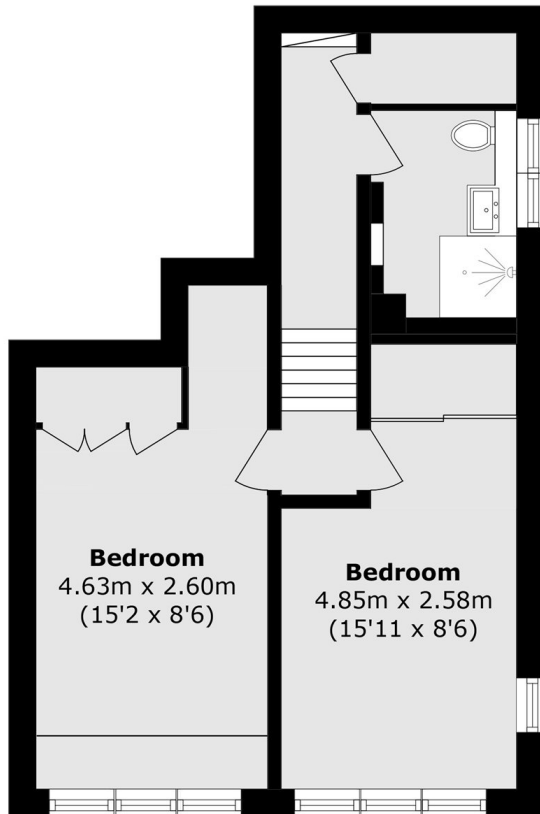
£525,000

A well presented, split-level apartment, originally designed by an architect, the apartment has been thoughtfully arranged to maximise space and functionality. The property offers a large open-plan kitchen and living area and benefits from large west-facing windows with views over the communal gardens. The contemporary kitchen features Art Deco-inspired plywood cabinetry and a practical central island. Both double bedrooms are generously sized with built-in wardrobes, while the recently refurbished bathroom features a luxurious rainfall shower.

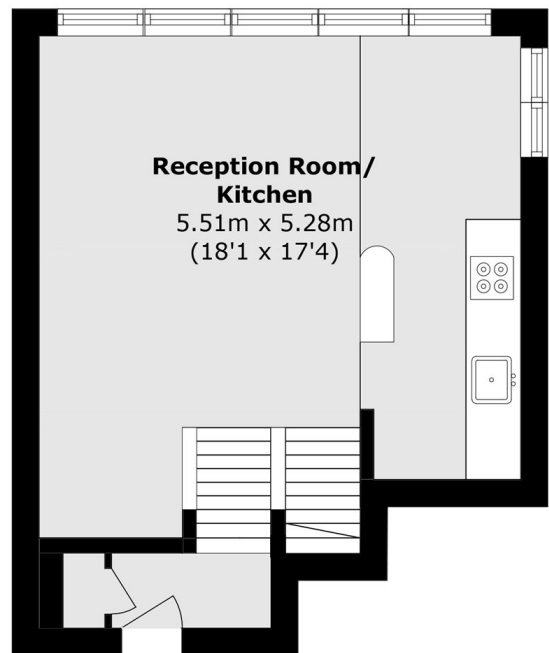
Features

- Two Double Bedrooms
- Split-level Apartment
- Stunningly Refurnished
- Plenty of Storage
- Dual Aspect
- Concierge

Bunhill Row,
London, EC1Y



Second Floor



Third Floor

Total area (approx.): 65.4 sq. m (703.9 sq. ft)