



**28 Columbia Avenue, Sutton-In-Ashfield - NG17 2HA**

Guide Price **£240,000**

**DavidJames**  
the estate agent



## 28 Columbia Avenue

Sutton-In-Ashfield, Sutton-In-Ashfield

Beautifully presented 3-bed semi-detached family home with a modern kitchen, 2 reception rooms, stylish bathroom, large garden with patio as well as both a driveway and garage!  
Council Tax band: B

Tenure: Freehold

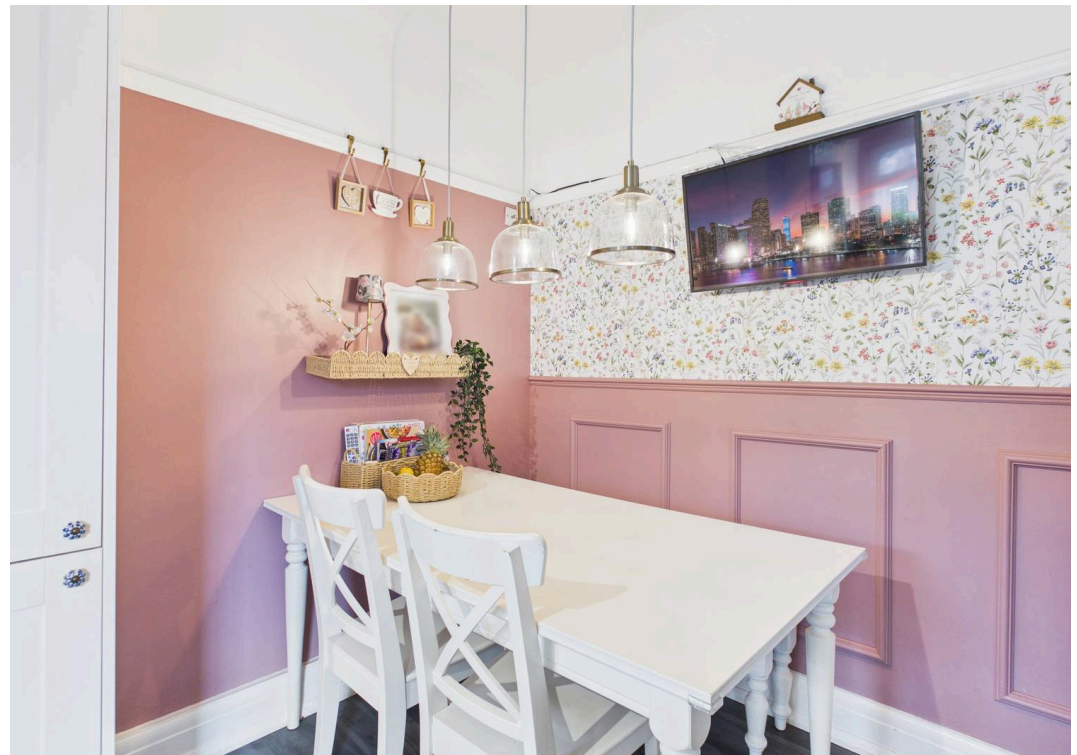
EPC Energy Efficiency Rating: D

EPC Environmental Impact Rating: D

- Traditional semi-detached family home
- Beautifully-presented throughout
- Within easy reach of amenities, supermarkets, schools and excellent transport links
- Bright and spacious lounge with a feature bay window and multi-fuel burner
- Separate versatile sitting/play room with original flooring
- Superb open plan dining kitchen with integrated cooking appliances
- Three first floor bedrooms
- Modern bathroom with a three-piece white suite and rainfall over-bath shower
- Generous lawned rear garden with a variety of patio seating areas and a summerhouse
- Driveway and garage provide multi-vehicle off-street parking









Floor 0 Building 1

**Approximate total area<sup>(1)</sup>**

84.2 m<sup>2</sup>  
906 ft<sup>2</sup>

**Reduced headroom**

0.4 m<sup>2</sup>  
4 ft<sup>2</sup>



Floor 1 Building 1

(1) Excluding balconies and terraces

**Reduced headroom**

..... Below 1.5 m/5 ft

Calculations reference the RICS IPMS 3C standard. Measurements are approximate and not to scale. This floor plan is intended for illustration only.

**GIRAFFE360**





## David James Estate Agents

43 Forest Street, Sutton-in-Ashfield - NG17 1DA

01623 554084 • [sutton@david-james.com](mailto:sutton@david-james.com) • [www.david-james.com](http://www.david-james.com)

These particulars are produced in good faith and are set out as a general guide only. Measurements are approximate and floor plans are for illustrative purposes only. Services have not been tested. We have established professional relationships with third-party suppliers for the provision of services to Clients, details of which can be found on the property listing page on our website.