



TK International
020 7794 8700
www.t-k.co.uk

Residential Sales
Residential Lettings
Property Management

Sales Office:
9 Heath Street
Hampstead
London NW3 6TP
E: sales@t-k.co.uk

Lettings Office:
16-18 Heath Street
Hampstead
London NW3 6TE
E: lettings@t-k.co.uk

tk.international
TK International
TK International

Est.
1998



Elsworthy Road Primrose Hill NW3

A beautifully appointed two to three bedroom apartment offering bright, open plan living and thoughtfully designed interiors, enviably positioned just moments from the open spaces of Primrose Hill.

Finished to an excellent standard throughout, this impressive home combines elegance with generous proportions. The accommodation features a stylish contemporary kitchen open plan to a spacious reception room, flooded with natural light thanks to its southerly aspect and two skylights. The principal bedroom benefits from a dressing area and ensuite shower room, complemented by a second double bedroom, an additional study or studio, a guest cloakroom and a welcoming entrance hall.

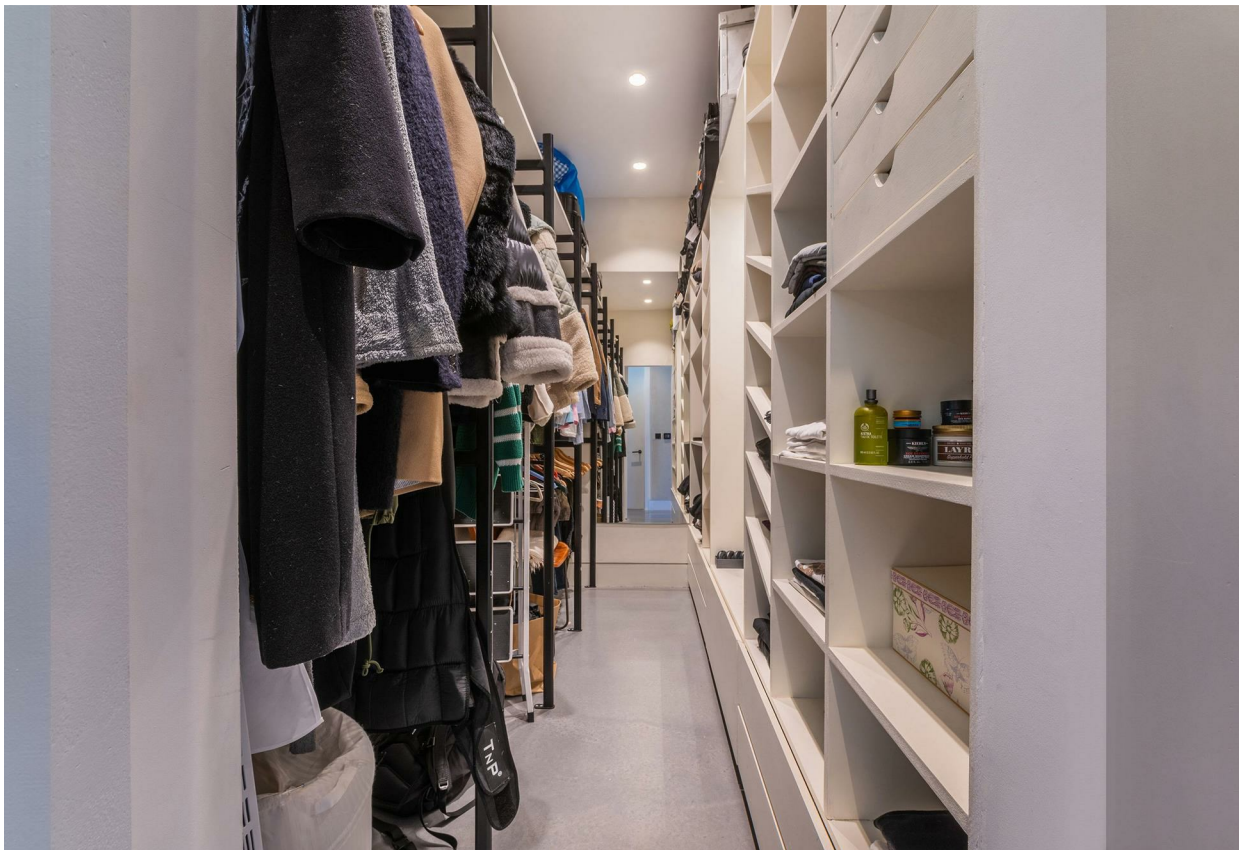
Elsworthy Road is ideally located within easy walking distance of the cafés and boutiques of Primrose Hill, Swiss Cottage Underground Station (Jubilee Line), and the green open spaces of both Regent's Park and Primrose Hill.

£7,000 Per Month

SOLE AGENT





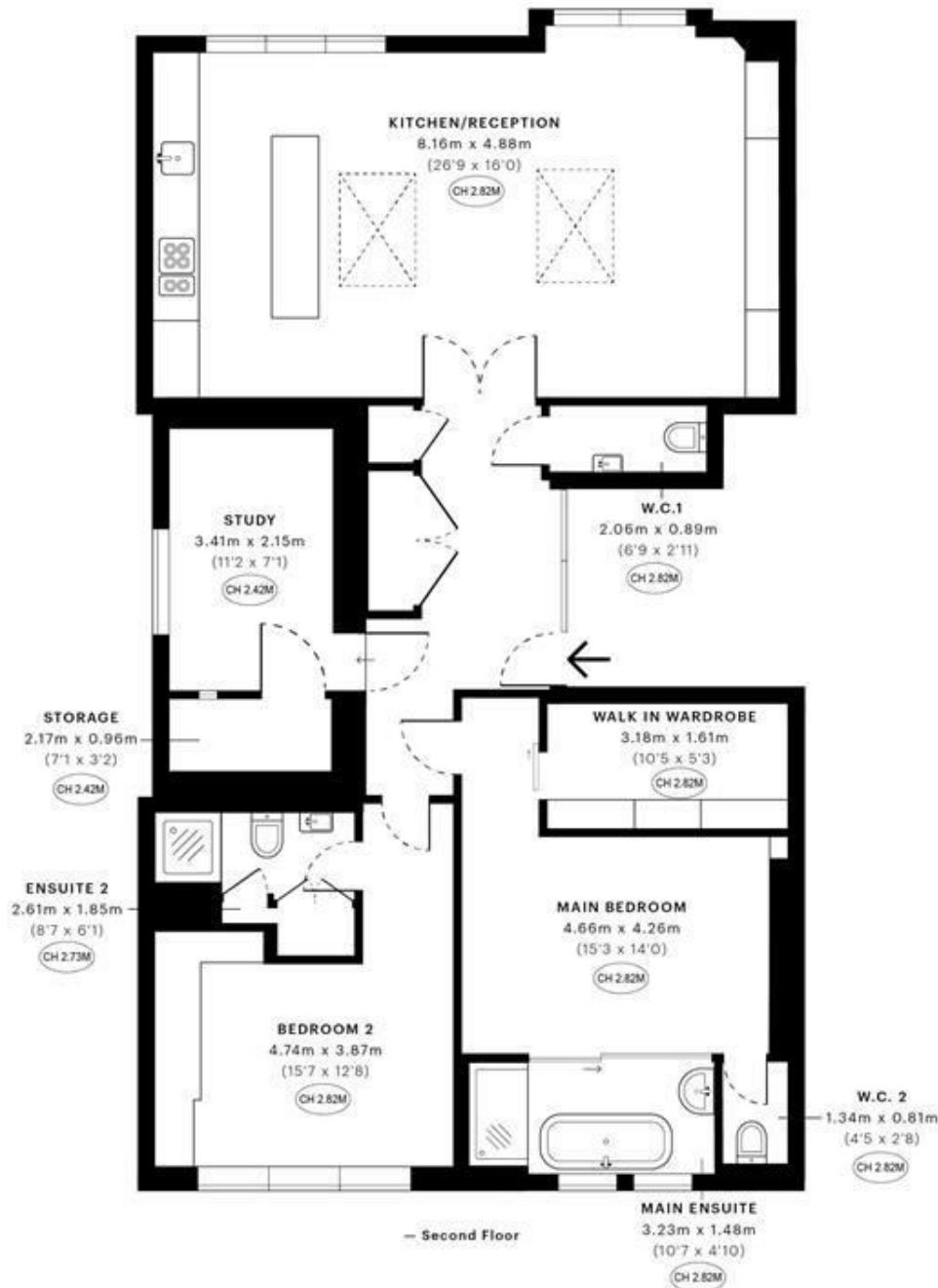


Elsworthy Road, NW3

CAPTURE DATE 03/02/2022 LASER SCAN POINTS 2,537,961

GROSS INTERNAL AREA

108.44 sqm / 1167.24 sqft



GROSS INTERNAL AREA (GIA)
The footprint of the property
108.44 sqm / 1167.24 sqft

NET INTERNAL AREA (NIA)
Excludes walls and external features
Includes washrooms, restricted head heights
99.50 sqm / 1071.01 sqft

EXTERNAL STRUCTURAL FEATURES
Balconies, terraces, verandas etc.
0.00 sqm / 0.00 sqft

RESTRICTED HEAD HEIGHT
Limited use area under 1.5 m
0.00 sqm / 0.00 sqft



Spec Verified floor plans are produced in accordance with Royal Institution of Chartered Surveyors' Property Measurement Standards. Plots and gardens are illustrative only and excluded from all area calculations. Due to rounding, numbers may not add up precisely. All measurements shown for the individual room lengths and widths are the maximum points of measurements captured in the scan.

IPMS 3B RESIDENTIAL 108.20 sqm / 1164.66 sqft
IPMS 3C RESIDENTIAL 99.73 sqm / 1073.48 sqft

SPEC ID: 61f9133fc652550e6c160b9d