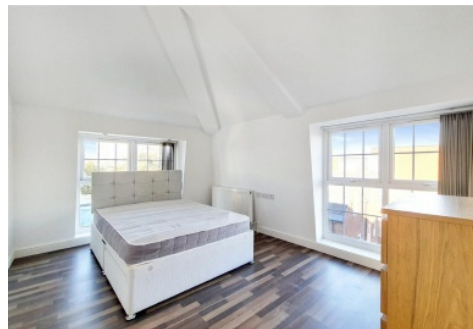


# SNELLERS

ESTATE AGENTS



## King Street, TW1

£1,650 PCM

Stylish and modern one-bedroom flat located in the heart of central Twickenham. This beautifully presented property features a spacious open-plan living and kitchen area with sleek, contemporary finishes and elegant wood flooring throughout. The bright and airy double bedroom offers ample storage, while the bathroom is finished to a high standard.

King Street is located opposite Church Street and amongst all the cafe's, restaurants, shops and bars of Twickenham. Twickenham station is nearby with direct links into central London.

- Bike Storage
- Excellent Transport Links
- Wood Floors
- Open Plan Living Room
- Bright and Spacious
- Central Twickenham

# SNELLERS

ESTATE AGENTS

---

Snellers Twickenham Lettings  
64-66 Heath Road  
Twickenham  
TW1 4BX  
020 8892 5678  
[twickenhamlettings@snellers.co.uk](mailto:twickenhamlettings@snellers.co.uk)

Energy Rating: C We aim to make our particulars both accurate and reliable. However they are not guaranteed; nor do they form part of an offer or contract. If you require clarification on any points then please contact us, especially if you're traveling some distance to view. Please note that appliances and heating systems have not been tested and therefore no warranties can be given as to their good working order