



**CHAFFERS**  
ESTATE AGENTS



## Broadlands Manston

Sturminster Newton, DT10 1EZ

A delightful 4 Bedroom Detached Bungalow with a Large Garden In A Rural Location. Benefits include a Double Garage, Driveway Parking for several vehicles.

**£1,850 PCM**  
Council Tax Band: E

# Broadlands Manston

Sturminster Newton, DT10 1EZ



## DESCRIPTION

ENTRANCE LOBBY - HALL -  
LOUNGE/DINER - KITCHEN - FOUR  
BEDROOMS - SHOWER ROOM -  
DOUBLE GARAGE - LARGE GARDEN -  
OIL FIRED CENTRAL HEATING

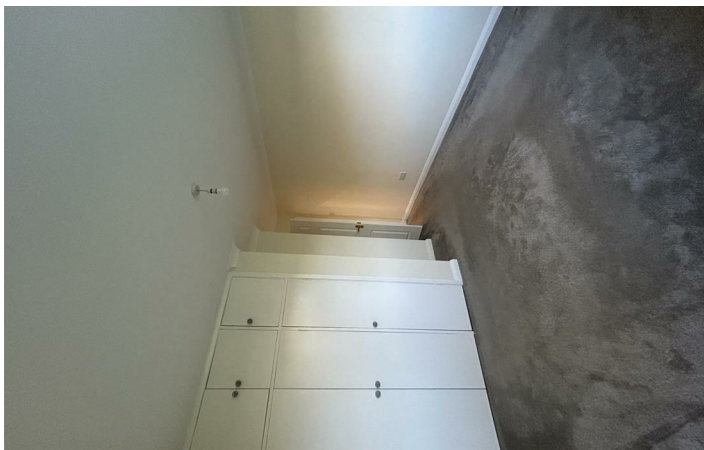
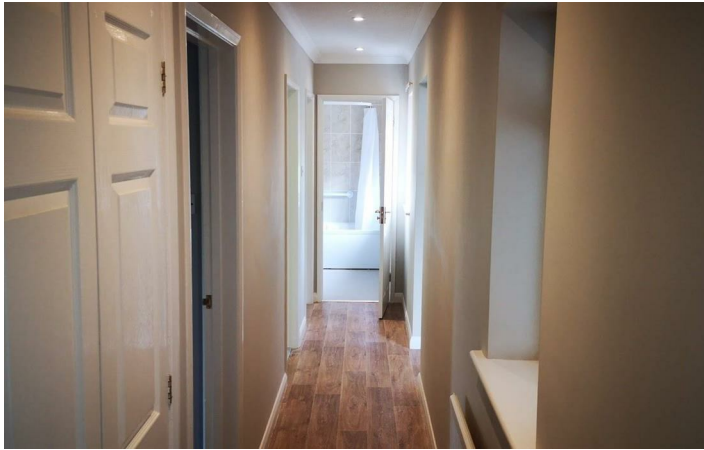
## SITUATION

Manston is a small, charming and picturesque village, situated approximately 2 miles north-west of the town of Sturminster Newton, surrounded by beautiful countryside and is home to several historic buildings and landmarks, including the Grade II listed St. Nicholas Church, dating back to the 13th century. There is also a pub and a village hall.



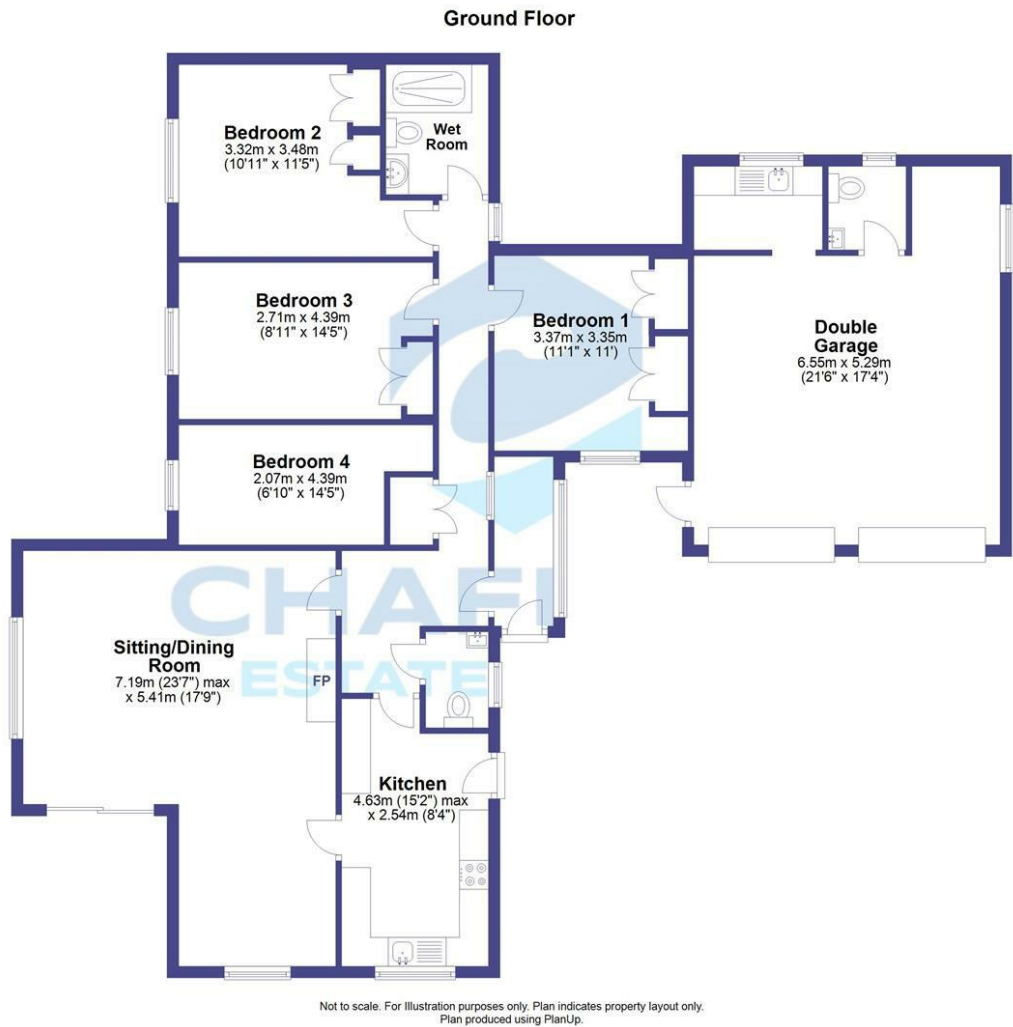
## Directions







Floor Plan: Not to scale ~ For identification purposes only.



These particulars, whilst believed to be accurate are set out as a general outline only for guidance and do not constitute any part of an offer or contract. Intending purchasers should not rely on them as statements of representation of fact, but must satisfy themselves by inspection or otherwise as to their accuracy. No person in this firms employment has the authority to make or give any representation or warranty in respect of the property.

48 High Street, Shaftesbury, Dorset, SP7 8AA  
Tel: 01747 852301 Email: [shaftesbury@chaffersstateagents.co.uk](mailto:shaftesbury@chaffersstateagents.co.uk) [www.chaffersstateagents.co.uk](http://www.chaffersstateagents.co.uk)

