



Connells

Mill Green Road
Amesbury Salisbury



Property Description

Well-situated at the start of this established development, this semi detached house offers a lovely cottage-style garden with good privacy and further features an attached garage with driveway. The property is ideally located within minutes of the town centre, the A303 and Salisbury.

Entrance Porch

Lounge

Stairs to first floor landing, door to garden.

Kitchen

Comprising a single drainer sink unit, range of wall and base units with work surfaces over, built in oven, inset hob unit, washing machine, further appliance space. attractive aspect to front over a green.

Landing

Built in cupboard.

Bedroom One

Rear aspect with views.

Bedroom Two

Open aspect to front over a green.

Bathroom

Comprising a panel enclosed bath with wall mounted shower, wash hand basin and WC

Outside

Rear Garden

A lovely southerly facing cottage-style garden with shingle pathway, mature shrub borders, small pergola, water supply and door to the garage.

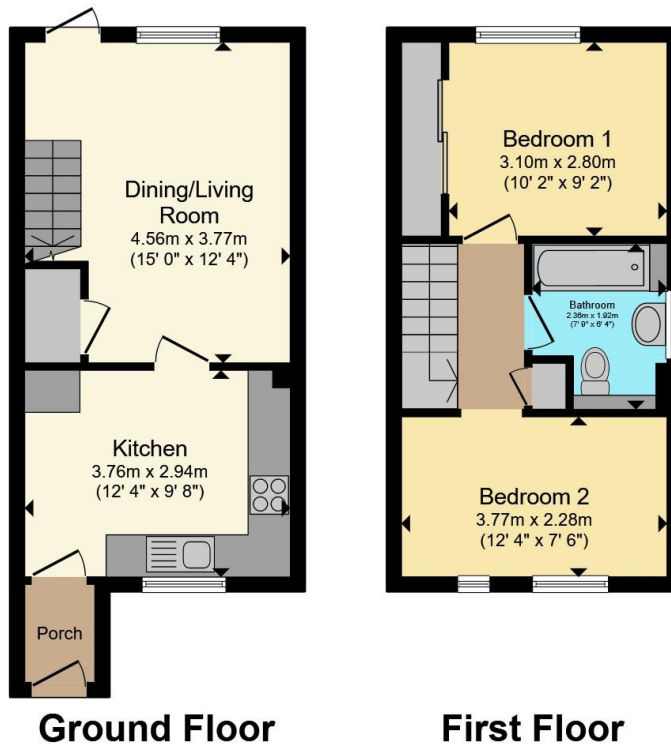
Garage

Adjacent with up and over door, power and light and a personal door to the garden.









Total floor area 58.8 m² (633 sq.ft.) approx

This floor plan is for illustrative purposes only. It is not drawn to scale. Any measurements, floor areas (including any total floor area), openings and orientation are approximate. No details are guaranteed, they cannot be relied upon for any purpose and they do not form part of any agreement. No liability is taken for any error, omission or misstatement. A party must rely upon its own inspection(s). Powered by www.propertybox.io



To view this property please contact Connells on

T 01980 622 662

E amesbury@connells.co.uk

Unit 3 23 Salisbury Street AMESBURY
SALISBURY SP4 7AW

EPC Rating: Council Tax
Awaited Band: C

Tenure: Freehold

view this property online connells.co.uk/Property/ABY308680



1. MONEY LAUNDERING REGULATIONS Intending purchasers will be asked to produce identification documentation at a later stage and we would ask for your co-operation in order that there will be no delay in agreeing the sale. 2. These particulars do not constitute part or all of an offer or contract. 3. The measurements indicated are supplied for guidance only and as such must be considered incorrect. Potential buyers are advised to recheck measurements before committing to any expense. 4. We have not tested any apparatus, equipment, fixtures, fittings or services and it is in the buyers interest to check the working condition of any appliances.

Connells Residential is registered in England and Wales under company number 1489613, Registered Office is Cumbria House, 16-20 Hockliffe Street, Leighton Buzzard, Bedfordshire, LU7 1GN. VAT Registration Number is 500 2481 05.

See all our properties at www.connells.co.uk | www.rightmove.co.uk | www.zoopla.co.uk

Property Ref: ABY308680 - 0004