



# Castles

OFFERS IN EXCESS OF  
**£425,000**  
**Upton Road**  
London, N18 2JU

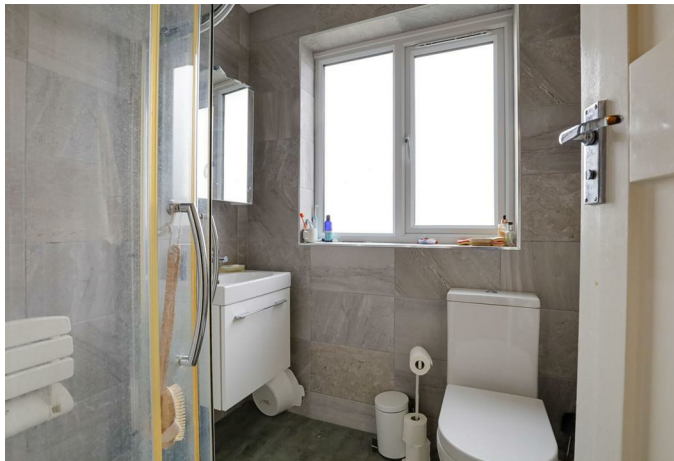


## PROPERTY SUMMARY

A three bedroom 1930's terraced house situated within 0.5m of Fore Street with its shops, transport links such as Silver Street Station. The property comprises of through lounge, extended kitchen/diner, garage to rear, 3 bedrooms and bathroom on first floor, front & rear gardens, gas central heating, double glazing and offered for sale on chain free basis. Internal viewing is highly recommended.

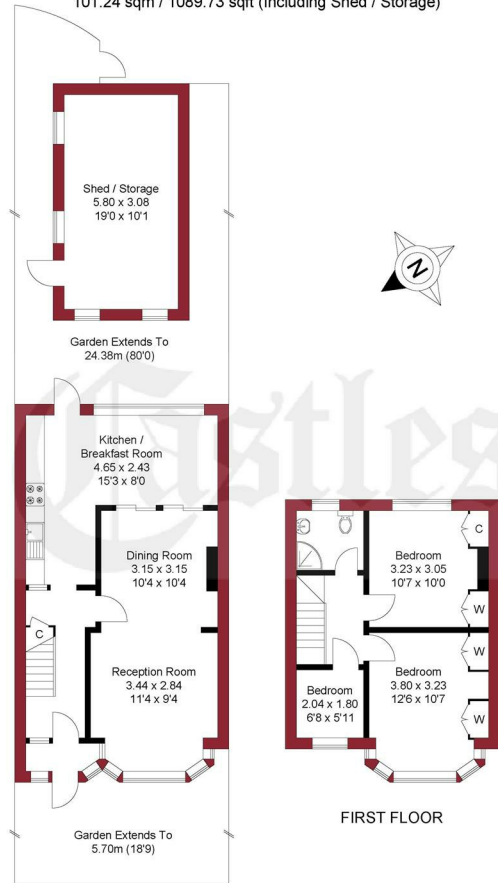






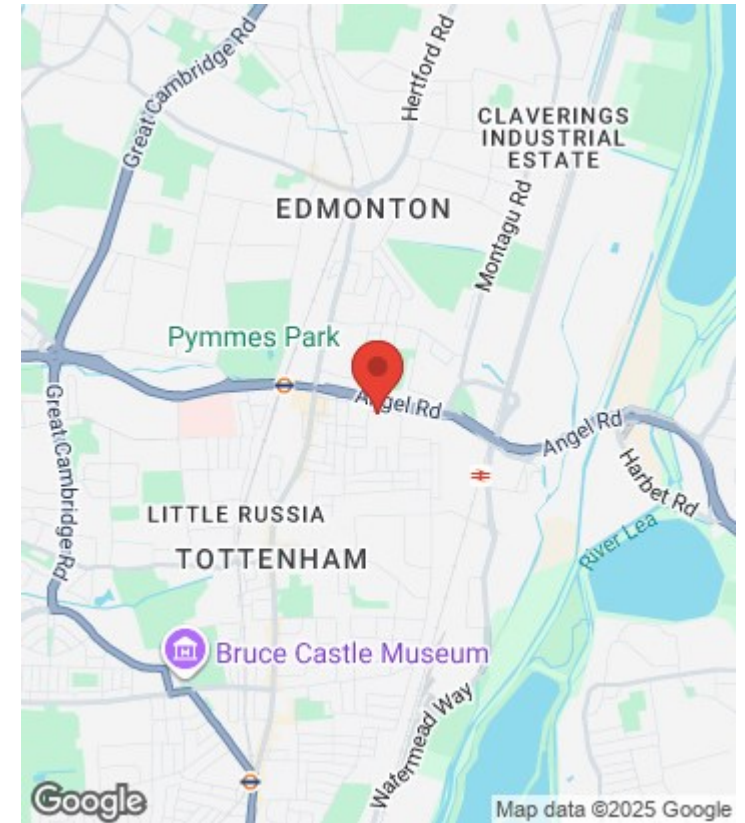


APPROXIMATE GROSS INTERNAL AREA  
83.37 sqm / 897.38 sqft (Excluding Shed / Storage)  
101.24 sqm / 1089.73 sqft (Including Shed / Storage)



THIS PLAN IS FOR ILLUSTRATION ONLY AND MAY NOT BE  
REPRESENTATIVE OF THE PROPERTY

For a guide to the area  
please scan this code for  
more information



House

Freehold

**Council:**

**Council Tax Band: C**

Agents Note: Whilst every care has been taken to prepare these particulars, they are for guidance purposes only. All measurements are approximate and are for general guidance purposes only and whilst every care has been taken to ensure their accuracy, they should not be relied upon and potential buyers/tenants are advised to recheck the measurements



#### OFFICE ADDRESS

438 Hertford Road  
Edmonton  
London  
N9 8AB

#### OFFICE DETAILS

020 8804 8123  
edmonton@castles.london  
<https://www.castles.london/>

