



## STOCKWELL PARK WALK, SW9

£2,800 per month

This top floor two bedroom, two bathroom apartment with private roof terrace overlooking the London skyline is based in a new build development that is between Stockwell and Brixton. The building has lift

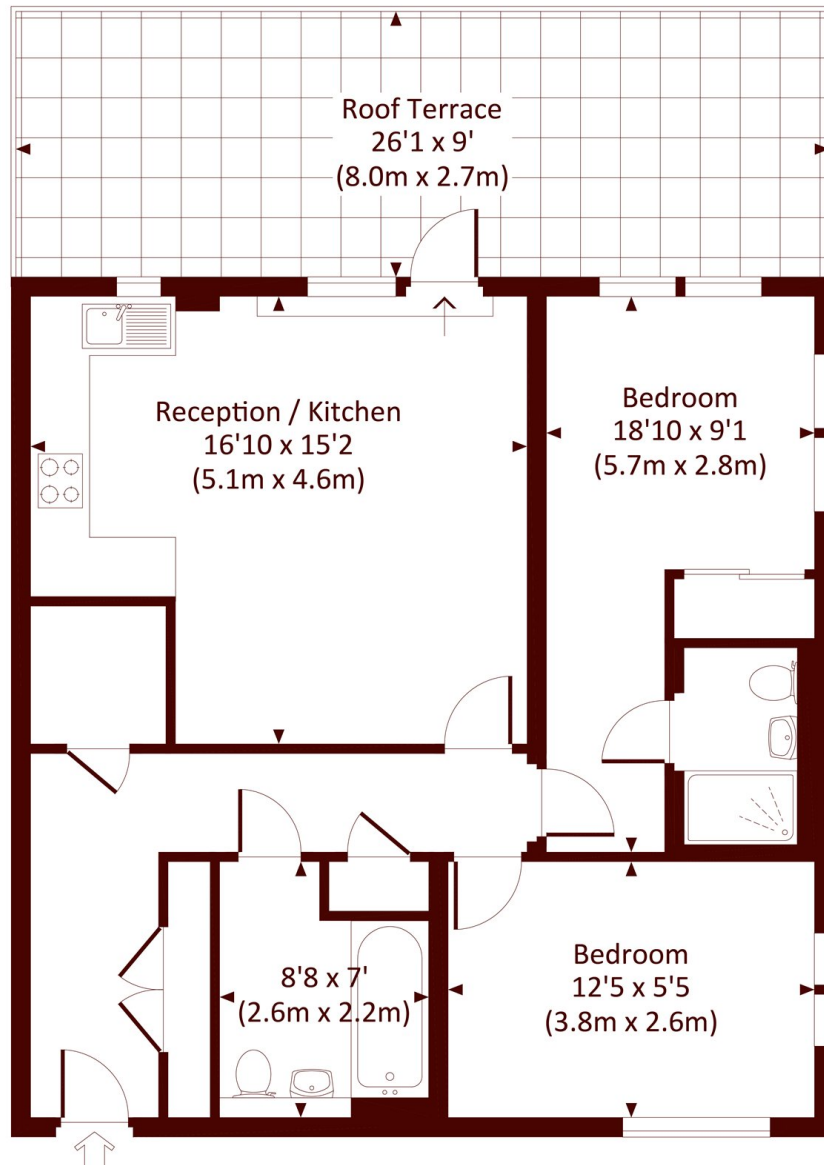
Two Bedrooms  
Two Bathrooms  
Private Roof Terrace

Top Floor Flat  
Lift Access  
Cycle Storage for Residents

# STEP INSIDE STOCKWELL PARK WALK

## STOCKWELL PARK WALK, SW6

Approx. gross internal area  
740 Sq Ft. / 68.7 Sq M.



THIRD FLOOR



All measurements have been made in accordance with RICS Code of Measuring Practice which are approximate only and only for illustrative purposes. For the avoidance of doubt, Dowling Jones Design shall not be liable for any reliance on these measurements. © 2019 www.dowlingjones.com 020 7610 9933

**Brixton**  
020 7871 5040

Energy Rating: We aim to make our particulars both accurate and reliable. However, they are not guaranteed; nor do they form part of an offer or contract. If you require clarification on any points then please contact us, especially if you're traveling some distance to view. Please note that appliances and heating systems have not been tested and therefore no warranties can be given as to their good working order

**MARSH &  
PARSONS**