



9 Heathfield Road, St Judes, Plymouth, Devon, PL4 9HD



Offers Over £230,000



Positioned close to the green open spaces of Tothill Park and conveniently located near Mount Gould Hospital, this well-presented semi-detached home enjoys a fantastic setting ideal for family life.

Offering flexible and well-proportioned accommodation throughout, the property welcomes you with an entrance hall leading into a comfortable living room, creating a warm and inviting space to relax. A modern ground-floor bathroom adds practicality, while to the rear of the home the contemporary kitchen/diner provides a bright and sociable hub, perfectly designed for everyday living as well as entertaining family and friends.

Upstairs, the property continues to impress with two generous double bedrooms, complemented by a further single bedroom and a separate WC, adding extra convenience for busy households.

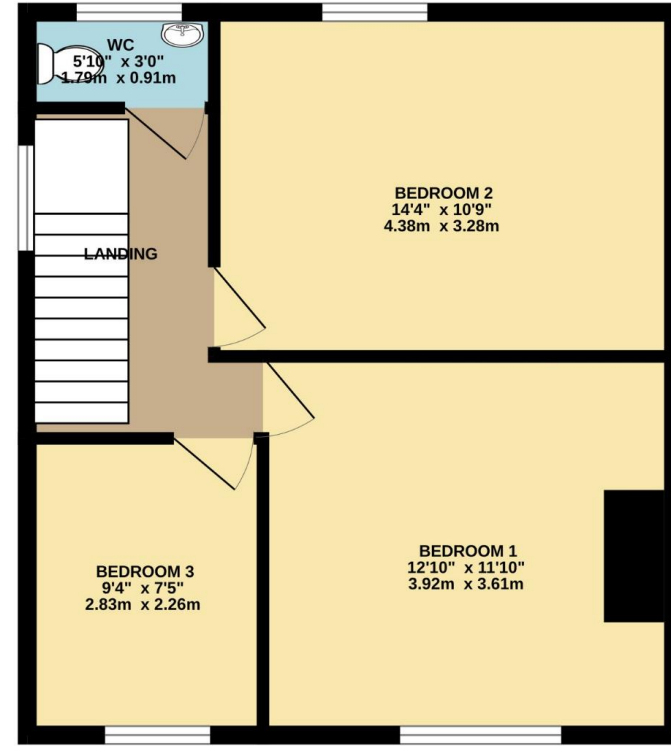
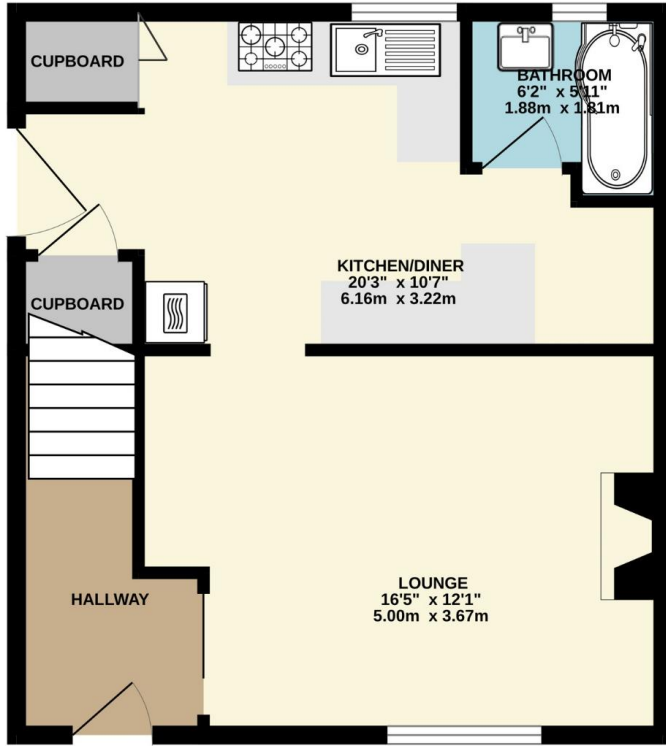
Externally, the rear garden has been designed with ease of maintenance in mind and benefits from a south-westerly aspect, making it an ideal space for summer gatherings, outdoor dining, and BBQs. A useful summer house provides additional storage or potential for a hobby space. To the front, a gravelled frontage with a path leading to the entrance creates an attractive approach to the property.

Thoughtfully arranged and well laid out throughout, this appealing home combines versatile living space with a sought-after residential location.



To view this property call Lang Town & Country Estate Agents on **01752 256000**.





TOTAL FLOOR AREA : 915 sq.ft. (85.0 sq.m.) approx.

Whilst every attempt has been made to ensure the accuracy of the floorplan contained here, measurements of doors, windows, rooms and any other items are approximate and no responsibility is taken for any error, omission or mis-statement. This plan is for illustrative purposes only and should be used as such by any prospective purchaser. The services, systems and appliances shown have not been tested and no guarantee as to their operability or efficiency can be given.
Made with Metropix ©2026



Lang Town & Country
6 Mannamead Road
Plymouth
PL4 7AA
Tel: 01752 256000
Email: property@langtownandcountry.com
www.langtownandcountry.com

Lang Town & Country endeavour to ensure the accuracy of property details produced and displayed, we have not tested any apparatus, equipment, fixtures, fittings or services and so cannot verify that they are connected, in working order or fit for purpose. A buyer must check the availability of any property and make an appointment to view before embarking on any journey to see a property.

