



SAMUEL WOOD



55 Willow Street

Oswestry, SY11 1AQ

£650 Per Month



MANAGED BY SAMUEL WOOD Recently refurbished studio apartment located in the heart of Oswestry, offering modern and well-presented accommodation within easy walking distance of the town's amenities. The property features a bright and spacious open-plan living and sleeping area, a newly fitted kitchen, and a contemporary shower room. Ideally situated close to shops, restaurants, and transport links, this studio is perfect for a single occupant seeking convenient town-centre living..



CONTEMPORARY AGENCY • TRADITIONAL VALUES

propertymark

MAYFAIR
OFFICE.CO.UK

rightmove

onTheMarket.com



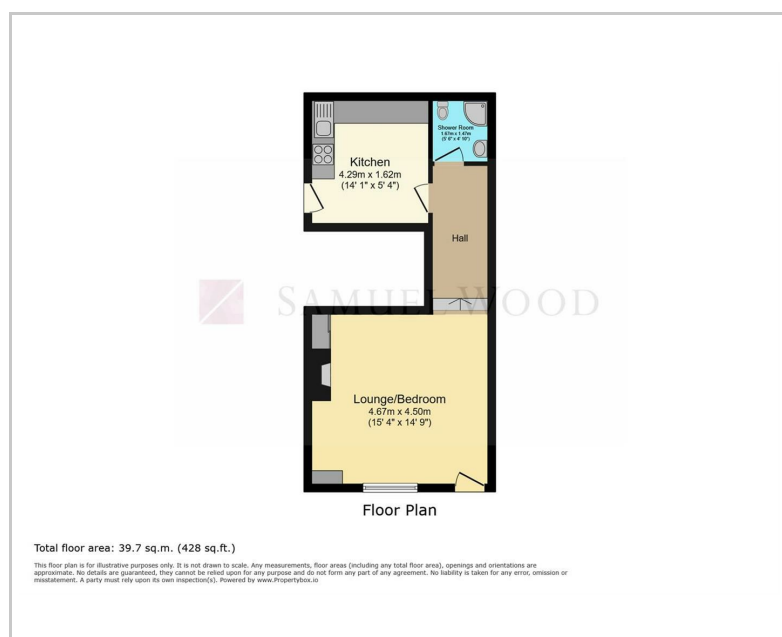
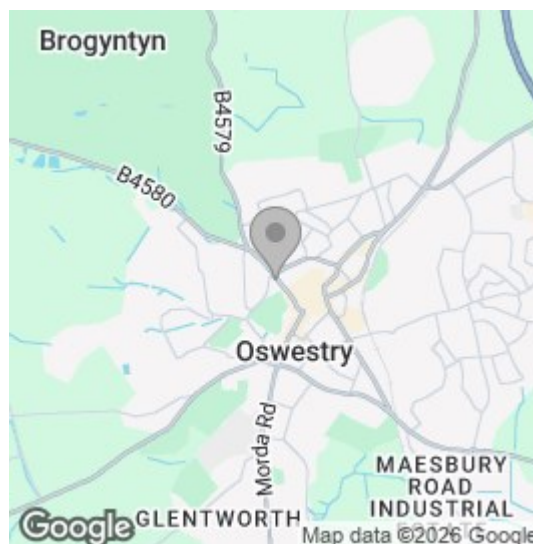
Charming ground-floor studio flat, ideally situated just a five-minute walk from the town center and local park.

Recently refurbished throughout, the property benefits from improved insulation, new carpets, and a modern fitted kitchen with space for a washing machine and cooker. The studio is heated by an energy-efficient night storage heater, helping to keep running costs low.

The accommodation also features a newly fitted bathroom complete with a contemporary shower cubicle.

An ideal home for a individual seeking comfortable, low-maintenance living in a convenient location.

Area Map



We take every care in preparing our sales details. They are checked and usually verified by the Vendor. We do not guarantee appliances, alarms, electrical fittings, plumbing, showers etc. You must satisfy yourself that they operate correctly. Room sizes are approximate; they are usually taken in metric and converted to imperial. Do not use them to buy carpets or furniture. We cannot verify the tenure, as we do not have access to the legal title; we cannot guarantee boundaries or rights of way so you must take the advice of your legal representative. No person in the employment of or representing Samuel Wood has any authority to make any representation or warranty whatever in relation to this property. If there is any point which is of particular importance to you, please contact the office and we will be pleased to check the information. Do so particularly if contemplating travelling some distance to view. Applicants are advised that the majority of our shots are taken with a wide angle lens.

2 Shoplatch, Shrewsbury, Shropshire, SY1 1HF
Tel: 01743 272710 | shrewsbury@samuelwood.co.uk

www.samuelwood.co.uk